

Activity ID	Activity Description	Work Days	Forecast Start	Forecast Finish	BL FINISH	Total Float	% Comp	FY13 FY14 FY15																																			
								FY13												FY14												FY15											
								S	O	N	D	J	F	M	A	M	J	J	A	S	S	O	N	D	J	F	M	A	M	J	J	A	S	S	O	N	D	J	F	M	A	M	J
NSTX Upgrade Project																																											
Critical Decisions																																											
LEVEL I																																											
CD1A	CD1 Approval	0		15APR10A	15APR10A		100																																				
CD2A	Receive CD-2 Approval	0		20DEC10A	20DEC10*		100																																				
CD3A	Receive CD-3 Approval	0		19DEC11A	23SEP11		100																																				
CD4	CD4 (PEP DATE = SEPTEMBER 2015)	0		29SEP15*	29MAY15	0	0	CD4 (PEP DATE = SEPTEMBER 2015) ▼																																			
LEVEL II																																											
CD0A	CD0 Approval	0		23FEB09A			100																																				
Level 2 Milestones																																											
LEVEL II																																											
0001	**NSTX FY10 RUN- 15 RUN WEEKS**(FY11-4WKS)	149*	01APR10A	29OCT10A			100																																				
1010	Project Preliminary Design Review (PDR)	0		23JUN10A	23JUN10A		100																																				
1000	NB #2 Decon Program Complete	0		29OCT10A	01NOV10*		100																																				
FDR	PROJECT FDR	0		22JUN11A	15JUN11*		100																																				
SD-1	NSTX COMPLETE OPERATIONS	0		01SEP11A	01MAR12*		100																																				
SD-2	BEGIN UPGRADE OUTAGE	0		12SEP11A	02APR12		100																																				
1070	Receive 1st Delivery Machined Inner TF Conductr	0		24APR12A	03AUG12		100																																				
1149	Begin Inner TF Quadrant Fab (apply turn insul #1	0		25JUN12A	20SEP12		100																																				
1210	NB Cap Installed	0		30OCT12	03JAN14	296	0	▼ NB Cap Installed																																			
1150	Complete Assy And Pot Of 4th Inner TF Quadrant	0		10APR13	27MAR13	40	0	▼ Complete Assy And Pot Of 4th Inner TF Quadrant																																			
1160	Complete Fabricate & test Inner TF/OH Coil Assy	0		26NOV13	17OCT13	50	0	▼ Complete Fabricate & test Inner TF/OH Coil Assy																																			
1230	Lift In New Centerstack	0		03MAR14	27MAR14	40	0	▼ Lift In New Centerstack																																			
1330	Complete ISTP.	0		04AUG14	29SEP14	40	0	▼ Complete ISTP.																																			
SD-3	RESUME OPERATIONS (Early Start)	0		04AUG14	30SEP14*	40	0	▼ RESUME OPERATIONS (Early Start)																																			
Level 3 Milestones																																											
LEVEL II																																											
CDR	PROJECT CDR	0		28OCT09A	28OCT09A		100																																				
CD1	Submit CD-1 Request	0		22JAN10A	22JAN10A		100																																				
PDR	PROJECT PDR	0		23JUN10A	23JUN10A		100																																				
LRCD2	Lehman Review	0		10AUG10A	10AUG10A		100																																				
1090	Award Neutral Beam (NB) Vessel Cap	0		28FEB12A	01OCT12		100																																				

Data Date: 31OCT12
Run Date: 03DEC12 08:03

1211 EVMS Rule
A = LOE K = Planning Pkg
B = Milestone
C = % Complete

NSTX UPGRADES
October 31, 2012 Status
Resource Loaded Schedule

Sheet 1 of 98

	BASELINE
	FORECAST
	Progress Bar
	Critical Activity

Activity ID	Activity Description	Work Days	Forecast Start	Forecast Finish	BL FINISH	Total Float	% Comp	FY13												FY14												FY15														
								S	O	N	D	J	F	M	A	M	J	J	A	S	S	O	N	D	J	F	M	A	M	J	J	A	S	S	O	N	D	J	F	M	A	M	J	J	A	S
LEVEL 3																																														
CD2	Submit CD2 Request	0		24NOV10A	05NOV10*		100																																							
1030	Award Inner (TF) Conductor Material Contract	0		12JAN11A	20DEC10		100																																							
1019	NBI Final Design Peer Review	0		14APR11A	31MAR11*		100																																							
1021	CS Final Design Peer Review	0		18MAY11A	16MAY11*		100																																							
1037	Award TF Lead Extensions	0		30AUG11A	13MAY11		100																																							
1038	Award Friction Stir Weld Contract	0		30AUG11A	11OCT11		100																																							
1035	Award Inner (TF) Conductor Machining contract	0		14SEP11A	03MAY11		100																																							
LRCD3	Lehman Review	0		27OCT11A	21JUL11		100																																							
1280	N/R Complete Refurbishment Of Sources	0		28OCT11A	30SEP10		100																																							
CD3	Submit CD3 Request	0		11NOV11A	11AUG11		100																																							
1040	Award Ohmic Heating (OH) Conductor	0		21NOV11A	01OCT12		100	◆																																						
1110	N/A Award NB Rectangular Bellows Section	0		30NOV11A	11JUN12		100																																							
1140	Lift Out Old Centerstack	0		02DEC11A	26JAN12		100																																							
1052	Award CS Casing	0		09JAN12A	22JUN12		100																																							
1120	Complete Diagnostics Removals	0		03FEB12A	26SEP12		100	◆																																						
1025	Award CS PFC Tiles	0		29FEB12A	13DEC11		100																																							
1051	Deliver TF Quadrant Mold	0		30APR12A	14FEB12		100																																							
1180	Deliver NB Rectangular Bellows Section	0		30APR12A	27JAN14		100											◆																												
1100	OH Conductor Delivered	0		25MAY12A	18JAN13		100			◆																																				
1190	Deliver NB Vessel Cap	0		27JUN12A	24JUN13		100																																							
1050	Complete Machining Inner TF Conductors	0		26NOV12		132	0	▼	Complete Machining Inner TF Conductors																																					
1130	Award Contract Inner Poloidal Field (PF) Coils	0		12DEC12	16OCT12	86	0	◆	▼	Award Contract Inner Poloidal Field (PF) Coils																																				
1080	Complete 1st TF inner quadrant	0		23JAN13	30OCT12	40	0	◆	▼	Complete 1st TF inner quadrant																																				
1290	Reinstall New Pump Duct	0		24APR13	12FEB14	287	0		▼	Reinstall New Pump Duct ◆																																				
1060	Generate Center Stack (CS) Assembly Procedure	0		03JUN13	07OCT11	148	0			▼	Generate Center Stack (CS) Assembly Procedure																																			
1250	Beam Box Moved and Internals Installed	0		03JUN13	29MAY15	150	0			▼	Beam Box Moved and Internals Installed																								◆											
1220	Begin Field Coil Power Conversion DC Sys Cable I	0		08JUL13	30SEP13	147	0			▼	Begin Field Coil Power Conversion DC Sys Cable I																																			
1270	Begin Re-Installation Of Diagnostics	0		06AUG13	12FEB14	136	0			▼	Begin Re-Installation Of Diagnostics																																			
1240	Deliver Inner Inner PF Coils	0		13SEP13	03DEC13	86	0			▼	Deliver Inner Inner PF Coils ◆																																			
1310	Complete FCPC DC Systems Cable Installation	0		14NOV13	03FEB14	180	0			▼	Complete FCPC DC Systems Cable Installation ◆																																			
1170	Begin Final Assembly Of Centerstack	0		13DEC13	27JAN14	45	0			▼	Begin Final Assembly Of Centerstack																																			
1320	Re-Installation Of Diagnostics Complete	0		17DEC13	29MAY14	156	0			▼	Re-Installation Of Diagnostics Complete																																			
1200	Complete Final Assembly Of Centerstack	0		17FEB14	20MAR14	45	0			▼	Complete Final Assembly Of Centerstack																						◆													
1260	Install New Umbrella	0		24APR14	20MAY14	40	0			▼	Install New Umbrella																																			
1300	Begin Machine Pump down	0		07MAY14	18JUN14	40	0			▼	Begin Machine Pump down																																			

Activity ID	Activity Description	Work Days	Forecast Start	Forecast Finish	BL FINISH	Total Float	% Comp	FY13												FY14												FY15											
								S O N D J F M A M J J A S												S O N D J F M A M J J A S												S O N D J F M A M J J A S											
								S	O	N	D	J	F	M	A	M	J	J	A	S	S	O	N	D	J	F	M	A	M	J	J	A	S	S	O	N	D	J	F	M	A	M	J
Job: 1204 - PF4/5 Leads & Radial Supports-SMITH																																											
Final Design																																											
1204-0009	Dsgn Eng/CAD Models: Iteration, Optimizatn, Updt	10	18MAY10A	01JUN10A	01JUN10A		100																																				
1204-0013	ME Analysis/CAD Model Iterations-Strss/EM/Therml	24	19MAY10A	22JUN10A	22JUN10A		100																																				
1204-0014	Analysis of Preliminary Design Approved	1	22JUN10A	22JUN10A	22JUN10A		100																																				
1204-0016	PDR	1	23JUN10A	23JUN10A	23JUN10A		100																																				
1204-0021	DOE CD-2 (Lehman) Review	1	10AUG10A	10AUG10A	10AUG10A		100																																				
1204-0030	N/A Dsg Drawings Ready for Checking & Validation	1	16AUG10A	16AUG10A	16AUG10A		100																																				
1204-0028	Update CAD & Design Drawings(2mod/2dwg)	174	17AUG10A	28APR11A	04FEB11		100																																				
1204-0032	Analysis & Validation of Dsgn Complete(SEE 1208)	329*	04OCT10A	31JAN12A	01APR11		100																																				
1204-0033	Update CAD Models per Validation(SEE 1208)	237*	21FEB11A	31JAN12A	22APR11		100																																				
1204-0034	Rev Fab & Assembly Dwgs p/Valid(SEE 1208)	237*	21FEB11A	31JAN12A	13MAY11		100																																				
1204-0036	Drawings ready for FDR	19	23MAY11A	17JUN11A	07JUN11		100																																				
1204-0038	FDR	3	22JUN11A	24JUN11A	08JUN11		100																																				
1204-0035	Review, Check Drawings (SEE 1208)	1	31JAN12A	31JAN12A	06JUN11		100																																				
Job: 1205 - Umbrella-SMITH																																											
Lower Umbrella																																											
Final Design																																											
1205-0009	Dsgn Eng/CAD Models: Iteration, Optimizatn, Updt	30	03MAY10A	14JUN10A	14JUN10A		100																																				
1205-0011	Mockups:CS Struct Real Estate Issues	66	03MAY10A	04AUG10A	04AUG10A		100																																				
1205-0013	ME Analysis/CAD Model Iterations-Strss/EM/Therml	32	03MAY10A	16JUN10A	16JUN10A		100																																				
1205-0008	Input F/Analysis Group:Interface Detail to CS	1	01JUN10A	01JUN10A	01JUN10A		100																																				
1205-0010	Complete Preliminary CAD Models	10	09JUN10A	22JUN10A	22JUN10A		100																																				
1205-0014	Analysis of Preliminary Design Approved	1	16JUN10A	16JUN10A	16JUN10A		100																																				
1205-0016	PDR	1	24JUN10A	24JUN10A	24JUN10A		100																																				
1205-0018	Dsgn Eng & CAD Models: Iterations, Optim & Updat	38	24JUN10A	17AUG10A	17AUG10A		100																																				
1205-0021	DOE CD-2 (Lehman) Review	1	11AUG10A	11AUG10A	11AUG10A		100																																				
1205-0029	Final design Analysis (LOWER)	345	16AUG10A	06JAN12A	18FEB11		100																																				
1205-0028	Det Dsgn Eng, CAD/Analysis Iterations(15mod)	314*	17AUG10A	15NOV11A	18FEB11		100																																				
1205-0028A	Det Dsgn Eng, CAD/Analysis-Lid & Torque Plate	304	17AUG10A	28OCT11A			100																																				
1205-0028B	Det Dsgn Eng, CAD/Analysis-Legs	304	17AUG10A	28OCT11A			100																																				
1205-0028C	Det Dsgn Eng, CAD/Analysis-AI Blocks	314*	17AUG10A	15NOV11A			100																																				
1205-0028D	Det Dsgn Eng, CAD/Analysis-Overall Lower Umbrell	314*	17AUG10A	15NOV11A			100																																				
1205-0029A	Final design Analysis - Lid & Torque Plate	304*	17AUG10A	28OCT11A			100																																				
1205-0029B	Final design Analysis - Legs	344	17AUG10A	06JAN12A			100																																				
1205-0029C	Final design Analysis - AI Blocks	344	17AUG10A	06JAN12A			100																																				
1205-0029D	Final design Analysis - Overall Lower Umbrell	344	17AUG10A	06JAN12A			100																																				
1205-0024	PDR CAD model Compld-Outr supp ring/clamp/sprng	1	18AUG10A	18AUG10A	18AUG10A		100																																				
1205-0033	Update CAD Models per Validation	229	21FEB11A	16JAN12A	10MAY11		100																																				

Activity ID	Activity Description	Work Days	Forecast Start	Forecast Finish	BL FINISH	Total Float	% Comp	FY13												FY14												FY15														
								S	O	N	D	J	F	M	A	M	J	J	A	S	S	O	N	D	J	F	M	A	M	J	J	A	S	S	O	N	D	J	F	M	A	M	J	J	A	S
1205-0034	Rev Fabrication & Assembly Dwgs per Valid(LOWER)	229	21FEB11A	16JAN12A	24MAY11		100																																							
1205-0030	Design Drawings (11dwgs)	177	23FEB11A	30SEP11A	12APR11		100																																							
1205-0030A	Design Drawings - Lid & Torque Plate	304	23FEB11A	30SEP11A			100																																							
1205-0030B	Design Drawings - Legs	304	23FEB11A	30SEP11A			100																																							
1205-0030C	Design Drawings - AI Blocks	304	23FEB11A	30SEP11A			100																																							
1205-0030D	Design Drawings - Overall Lower Umbrell	304	23FEB11A	30SEP11A			100																																							
1205-0032	Validation of Design Complete	205	21MAR11A	16JAN12A	26APR11		100																																							
1205-0032A	Validation of Design - Lid & Torque Plate	205	21MAR11A	16JAN12A			100																																							
1205-0032B	Validation of Design - Legs & Inconel Feet	205	21MAR11A	16JAN12A			100																																							
1205-0032C	Validation of Dsgn-AI Blocks/Arch Reinforcements	205	21MAR11A	16JAN12A			100																																							
1205-0032D	Validation of Design - Overall Lower Umbrell	205	21MAR11A	16JAN12A			100																																							
1205-0036	Drawings ready for FDR	19	23MAY11A	17JUN11A	02JUN11		100																																							
1205-0038	FDR	3	22JUN11A	24JUN11A	03JUN11		100																																							
1205-0035	Review, Check Drawings (LOWER)	151*	24OCT11A	25MAY12A	01JUN11		100																																							
1205-0035A	Review, Check Drawings - Lid & Torque Plate	193*	24OCT11A	30JUL12A			100																																							
1205-0035B	Review, Check Drawings - Legs & Inconel Feet	47	24OCT11A	06JAN12A			100																																							
1205-0035C	Revw, Check Dwngs-AI Blocks/Arch Reinforcements	132*	24OCT11A	04MAY12A			100																																							
1205-0035D	Review, Check Drawings -Overall Lower Umbrella	147	24OCT11A	25MAY12A			100																																							
Procurement																																														
1205-0042C	Prep Req & Proc Package - Legs	27*	19JAN12A	09FEB12A			100																																							
1205-0042F	Prep Req & Proc Package - Inconel Feet	31*	19JAN12A	09FEB12A			100																																							
1205-0043	Submit Req to Procurement - lower	40*	30JAN12A	21MAR12A	14AUG12		100																																							
1205-0044	Procurement Processing	44*	31JAN12A	21MAR12A	13SEP12		100																																							
1205-0045	Submit for Vendor Quotes	44*	31JAN12A	21MAR12A	14SEP12		100																																							
1205-0046	Eval Quotes	44*	31JAN12A	21MAR12A	13NOV12		100																																							
1205-0047	Tech Eval of Vendors	44*	31JAN12A	21MAR12A	13NOV12		100																																							
1205-0048	Award / Order Approved	44*	31JAN12A	21MAR12A	14NOV12		100																																							
1205-0049	Fab & Deliver incl Vendor Oversight	151*	31JAN12A	01JUL13	18APR13	170	80	Fab & Deliver incl Vendor Oversight																																						
1205-0055	Parts ready for installation - BPA DELIVERY	266*	31JAN12A	15JUL13	21JUN13	170	80	Parts ready for installation - BPA DELIVERY																																						
1205-0042	Prep Req & Procurement Package	84*	01FEB12A	28MAR13	14AUG12	244	95	Prep Req & Procurement Package																																						
1205-0042A	Prep Req & Proc Package - Lid	84*	01FEB12A	28MAR13		244	75	Prep Req & Proc Package - Lid																																						
1205-0042B	Prep Req & Proc Package - Torque Plate	38*	01FEB12A	08MAR12A			100																																							
1205-0042E	Prep Req & Proc Pckg-AI BlockReinforcement	73*	01FEB12A	07MAY12A			100																																							
1205-0042G	Prep Req & Proc Pckg - Misc Reinforc & Harwr	190*	01FEB12A	24SEP12A			100	Prep Req & Proc Pckg - Misc Reinforc & Harwr																																						
1205-0042D	Prep Req & Proc Pckg- Arch Reinforcement Rings	10	16FEB12A	22FEB12A			100																																							
1205-0050	Receipt of Hardware	229*	01MAR12A	01JUL13	24APR13	244	80	Receipt of Hardware																																						
1205-0051	QA Inspection	149	01MAR12A	28MAR13	08MAY13	244	80	QA Inspection																																						
1205-0055C	Parts ready for installatn-U/L LEGS BPA DELIVERY	49*	16APR12A	22JUN12A			100																																							
1205-0052	N/R Resolve Procurement Issues	5	30APR12A	30APR12A	15MAY13		100																																							

Activity ID	Activity Description	Work Days	Forecast Start	Forecast Finish	BL FINISH	Total Float	% Comp	FY13												FY14												FY15														
								S	O	N	D	J	F	M	A	M	J	J	A	S	S	O	N	D	J	F	M	A	M	J	J	A	S	S	O	N	D	J	F	M	A	M	J	J	A	S
1205-0055F	Parts ready f/instaltn-U/L Ti Feet BPA DELV	36*	14MAY12A	26JUN12A			100																																							
Fabrication / Assembly																																														
1205-0054	Assembly of Components	88*	31JAN12A	21MAR12A	20JUN13		100																																							
1205-0056	Handling / Warehouse / Storage	343*	01MAR12A	15JUL13	26JUN13	170	80	-																																						
1205-0053	Documentation: Assembly Procedures	10	15MAR13	28MAR13	30MAY13	244	0	-																																						
Upper Umbrella																																														
Final Design																																														
1205-0067	Dsgn Eng/CAD Models: Iteration, Optimizatn, Updt	30	03MAY10A	14JUN10A	14JUN10A		100																																							
1205-0069	Mockups:CS Struct Real Estate Issues	66	03MAY10A	04AUG10A	04AUG10A		100																																							
1205-0071	ME Analysis/CAD Model Iterations-Strs/EM/Therm	32	03MAY10A	16JUN10A	16JUN10A		100																																							
1205-0066	Input F/Analysis Group:Interface Detail to CS	1	01JUN10A	01JUN10A	01JUN10A		100																																							
1205-0068	Complete Preliminary CAD Models	10	09JUN10A	22JUN10A	22JUN10A		100																																							
1205-0072	Analysis of Preliminary Design Approved	1	16JUN10A	16JUN10A	16JUN10A		100																																							
1205-0074	PDR	1	24JUN10A	24JUN10A	24JUN10A		100																																							
1205-0076	Dsgn Eng & CAD Models: Iterations, Optim & Updat	38	24JUN10A	17AUG10A	17AUG10A		100																																							
1205-0079	DOE CD-2 (Lehman) Review	1	11AUG10A	11AUG10A	11AUG10A		100																																							
1205-0086	Final Dsgn Eng Iterations, DetailCAD (15mod)	314*	17AUG10A	15NOV11A	04FEB11		100																																							
1205-0086A	Final Dsgn Eng, CAD/Analysis-Lid & Torque Plate	304	17AUG10A	28OCT11A			100																																							
1205-0086B	Final Dsgn Eng, CAD/Analysis-Legs	304	17AUG10A	28OCT11A			100																																							
1205-0086C	Final Dsgn Eng, CAD/Analysis-AI Blocks	314*	17AUG10A	15NOV11A			100																																							
1205-0086D	Fin Dsgn Eng, CAD/Analysis-Overall Upper Umbrell	314*	17AUG10A	15NOV11A			100																																							
1205-0087	Final Design Analysis (UPPER)	345	17AUG10A	09JAN12A	04FEB11		100																																							
1205-0087A	Final design Analysis - Lid & Torque Plate	304*	17AUG10A	28OCT11A			100																																							
1205-0087B	Final design Analysis - Legs	345	17AUG10A	09JAN12A			100																																							
1205-0087C	Final design Analysis - AI Blocks	344	17AUG10A	06JAN12A			100																																							
1205-0087D	Final design Analysis - Overall Upper Umbrell	345	17AUG10A	09JAN12A			100																																							
1205-0081	PDR CAD model Compld-Outr supp ring/clamp/sprng	1	18AUG10A	18AUG10A	18AUG10A		100																																							
1205-0090	Validation of Design Complete (UPPER)	219	21FEB11A	06JAN12A	06MAY11		100																																							
1205-0091	Update CAD Models per Validation	229	21FEB11A	16JAN12A	20MAY11		100																																							
1205-0092	Rev Fabrication & Assembly Dwgs per Valid(UPPER)	229	21FEB11A	16JAN12A	06JUN11		100																																							
1205-0088	Design Drawings (11dwgs)	177	23FEB11A	30SEP11A	22APR11		100																																							
1205-0088A	Design Drawings - Lid & Torque Plate	304	23FEB11A	30SEP11A			100																																							
1205-0088B	Design Drawings - Legs	304	23FEB11A	30SEP11A			100																																							
1205-0088C	Design Drawings - AI Blocks	304	23FEB11A	30SEP11A			100																																							
1205-0088D	Design Drawings - Overall Upper Umbrell	304	23FEB11A	30SEP11A			100																																							
1205-0090A	Validation of Design - Lid & Torque Plate	199	21MAR11A	06JAN12A			100																																							
1205-0090B	Validation of Dsgn-Legs & Inconel Feet	199	21MAR11A	06JAN12A			100																																							
1205-0090C	Validation of Design - AI Blocks Reinforcements	199	21MAR11A	06JAN12A			100																																							
1205-0090D	Validation of Design - Overall Upper Umbrell	199	21MAR11A	06JAN12A			100																																							
1205-0094	Drawings ready for FDR	19*	23MAY11A	17JUN11A	14JUN11		100																																							

Activity ID	Activity Description	Work Days	Forecast Start	Forecast Finish	BL FINISH	Total Float	% Comp	FY13												FY14												FY15														
								S	O	N	D	J	F	M	A	M	J	J	A	S	S	O	N	D	J	F	M	A	M	J	J	A	S	S	O	N	D	J	F	M	A	M	J	J	A	S
1205-0096	FDR	3	22JUN11A	24JUN11A	15JUN11		100																																							
1205-0093	Review, Check Drawings (UPPER)	151*	24OCT11A	25MAY12A	13JUN11		100																																							
1205-0093A	Review, Check Drawings - Lid & Torque Plate	193*	24OCT11A	30JUL12A			100																																							
1205-0093B	Review, Check Dwngs- Legs & Inconel Feet	47	24OCT11A	06JAN12A			100																																							
1205-0093C	Revw, Check Dwngs-AI Blocks/Arch Reinforcement	132*	24OCT11A	04MAY12A			100																																							
1205-0093D	Review, Check Drawings - Overall Upper Umbrell	147*	24OCT11A	25MAY12A			100																																							
Procurement																																														
1205-0100C	Prep Req & Proc Pckg-Legs	27*	19JAN12A	24FEB12A			100																																							
1205-0100F	Prep Req & Proc Package - Inconel Feet	27*	19JAN12A	09FEB12A			100																																							
1205-0100	Prep Req & Procurement Package	85*	31JAN12A	28MAR13	17SEP12	244	95	■ Prep Req & Procurement Package																																						
1205-0101	Submit Req to Procurement - UPPER	44*	31JAN12A	21MAR12A	17SEP12		100																																							
1205-0101C	Submit Req to Procurement - UPPER LEGS	19*	31JAN12A	09FEB12A			100																																							
1205-0101F	Submit Req to Proc - UPPER INCONEL FEET	19*	31JAN12A	09FEB12A			100																																							
1205-0102	Procurement Processing	44*	31JAN12A	21MAR12A	16OCT12		100	■																																						
1205-0103	Submit for Vendor Quotes	44*	31JAN12A	21MAR12A	17OCT12		100	■																																						
1205-0104	Eval Quotes	44*	31JAN12A	21MAR12A	18DEC12		100	■																																						
1205-0105	Tech Eval of Vendors	44*	31JAN12A	21MAR12A	18DEC12		100	■																																						
1205-0106	Award / Order Approved	44*	31JAN12A	21MAR12A	19DEC12		100	■																																						
1205-0107	Fab & Deliver incl Vendor Oversight	88*	31JAN12A	21MAR12A	21MAY13		100	■																																						
1205-0100A	Prep Req & Proc Package - Lid	84*	01FEB12A	28MAR13		244	75	■ Prep Req & Proc Package - Lid																																						
1205-0100D	Prep Req & Proc Package - ArcReinforcement Rings	10	16FEB12A	22FEB12A			100																																							
1205-0100B	Prep Req & Proc Package - Torque Plate	22*	23FEB12A	08MAR12A			100																																							
1205-0100E	Prep Req & Proc Package - AI Block Reinforcement	57*	23FEB12A	07MAY12A			100																																							
1205-0101B	Submit Req to Procurement - UPPER TORQUE PLATE	27*	23FEB12A	21MAR12A			100																																							
1205-0101E	Submit Req to Proc - UPPER AL BLOCK REINFORCEMNT	27*	23FEB12A	21MAR12A			100																																							
1205-0100G	Prep Req & Proc Pckg - Misc Reinforc & Harwr	170*	29FEB12A	24SEP12A			100	■ Prep Req & Proc Pckg - Misc Reinforc & Harwr																																						
1205-0108	Receipt of Hardware	129*	01MAR12A	01JUL13	29MAY13	176	80	■ Receipt of Hardware																																						
1205-0109	QA Inspection	135*	01MAR12A	11JUL13	12JUN13	170	80	■ QA Inspection																																						
1205-0101D	Submit Req to Proc - UPPER REINFORCEMENT RINGS	1	12MAR12A	12MAR12A			100																																							
1205-0101G	Submit Req to Proc - UPPER MISC REINFOR/HARDWARE	1	20MAR12A	20MAR12A			100																																							
1205-0101A	Submit Req to Procurement - UPPER LID	1	21MAR12A	21MAR12A			100																																							
1205-0110	N/R - Resolve Procurement Issues	5	21MAR12A	21MAR12A	19JUN13		100	■																																						
1205-0113	Parts ready for installation	105*	16APR12A	15JUL13	29JUL13	170	80	■ Parts ready for installation																																						
Fabrication / Assembly																																														
1205-0114	Handling / Warehouse / Storage	244*	01MAR12A	15JUL13	01AUG13	170	80	■ Handling / Warehouse / Storage																																						
1205-0112	Assembly of Components	15	21MAR12A	21MAR12A	26JUL13		100	■																																						
1205-0111	Documentation: Assembly Procedures	10	26JUN13	11JUL13	03JUL13	170	0	■ Documentation: Assembly Procedures																																						

Activity ID	Activity Description	Work Days	Forecast Start	Forecast Finish	BL FINISH	Total Float	% Comp	FY13												FY14												FY15											
								S O N D J F M A M J J A S												S O N D J F M A M J J A S												S O N D J F M A M J J A S											
								S	O	N	D	J	F	M	A	M	J	J	A	S	S	O	N	D	J	F	M	A	M	J	J	A	S	S	O	N	D	J	F	M	A	M	J

Job: 1206 - Pedestal -SMITH

Final Design

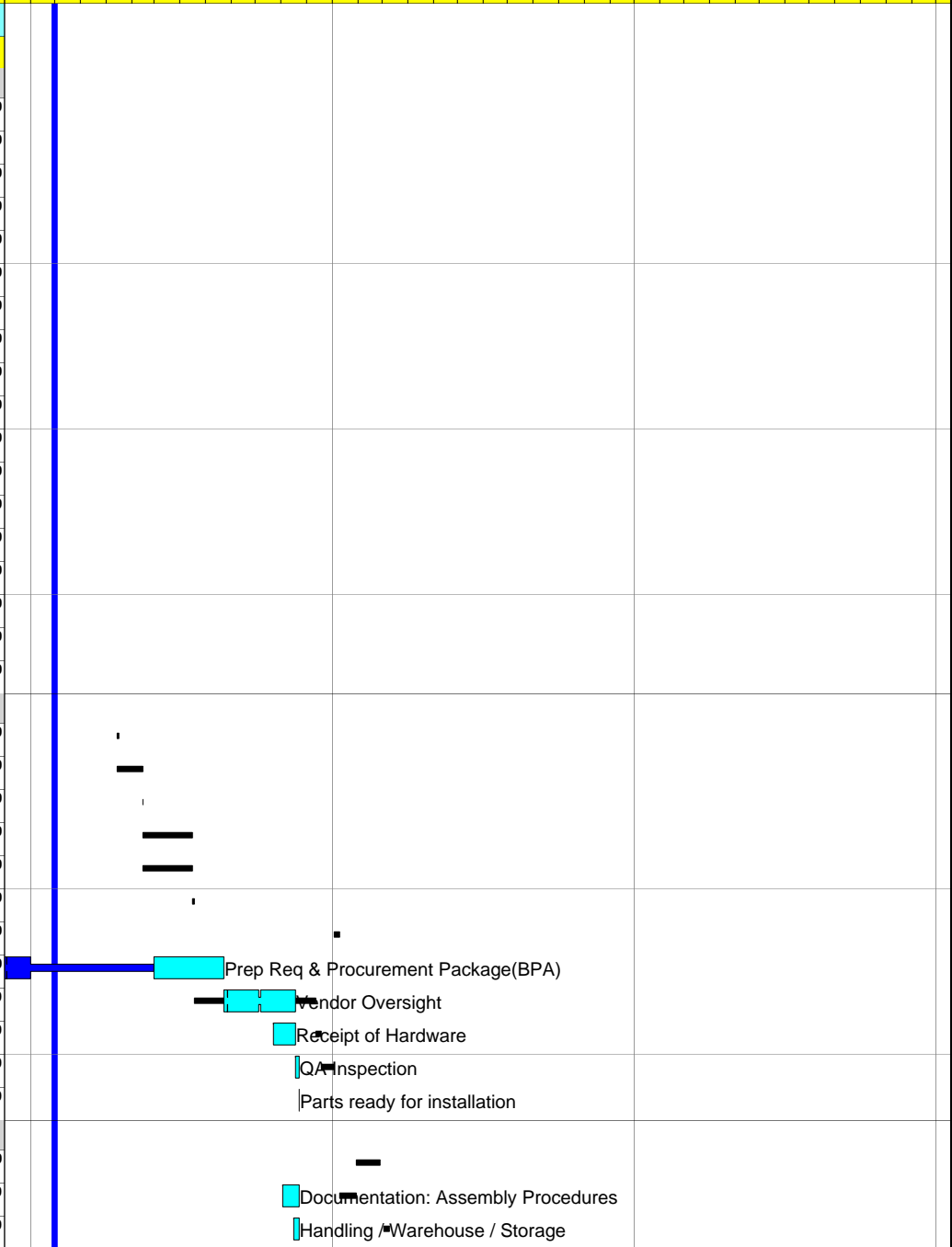
1206-0009	Dsgn Eng/CAD Models: Iteration, Optimizatn, Updt	10	18MAY10A	01JUN10A	01JUN10A		100
1206-0013	ME Analysis/CAD Model Iterations-Strss/EM/Therm	24	19MAY10A	22JUN10A	22JUN10A		100
1206-0008	Input F/Analysis Group:Interface Detail to CS	1	01JUN10A	01JUN10A	01JUN10A		100
1206-0010	Complete Preliminary CAD Models	10	01JUN10A	14JUN10A	14JUN10A		100
1206-0014	Analysis of Preliminary Design Approved	1	22JUN10A	22JUN10A	22JUN10A		100
1206-0016	PDR	1	23JUN10A	23JUN10A	23JUN10A		100
1206-0018	Dsgn Eng & CAD Models: Iterations, Optm & Updat	38	24JUN10A	17AUG10A	17AUG10A		100
1206-0021	DOE CD-2 (Lehman) Review	1	10AUG10A	10AUG10A	10AUG10A		100
1206-0028	Final Dsgn Eng Iteration, Detl CAD Model (19mod)	271	17AUG10A	15SEP11A	04MAR11		100
1206-0029	Final Design Analysis	271	17AUG10A	15SEP11A	04MAR11		100
1206-0023	PDR CAD model Compld-Outr supp ring/clamp/sprng	1	18AUG10A	18AUG10A	18AUG10A		100
1206-0030	Design Drawings (8dwg)	146	21FEB11A	15SEP11A	22APR11		100
1206-0033	Update CAD Models per Validation	159*	21FEB11A	04OCT11A	20MAY11		100
1206-0034	Revise Fabrication & Assembly Drawings per Valid	159	21FEB11A	04OCT11A	06JUN11		100
1206-0032	Validation of Design Complete	115	22APR11A	04OCT11A	06MAY11		100
1206-0036	Drawings ready for FDR	19	23MAY11A	17JUN11A	14JUN11		100
1206-0038	FDR	3	22JUN11A	24JUN11A	15JUN11		100
1206-0035	Review, Check, Drawings	242*	16SEP11A	24AUG12A	13JUN11		100

Procurement

1206-0043	N/R Submit Req to Procurement	1	21MAR12A	21MAR12A	15JAN13		100
1206-0044	N/R Procurement Processing	22	21MAR12A	21MAR12A	13FEB13		100
1206-0045	N/R Submit for Vendor Quotes	1	21MAR12A	21MAR12A	14FEB13		100
1206-0046	N/R Eval Quotes	5	21MAR12A	21MAR12A	15APR13		100
1206-0047	N/R Tech Eval of Vendors	5	21MAR12A	21MAR12A	15APR13		100
1206-0048	N/R Award / Order Approved	1	21MAR12A	21MAR12A	16APR13		100
1206-0052	N/R Resolve Procurement Issues	5	21MAR12A	21MAR12A	09OCT13		100
1206-0042	Prep Req & Procurement Package(BPA)	130	20AUG12A	23MAY13	15JAN13	142	50
1206-0049	Vendor Oversight	58	24MAY13	16AUG13	11SEP13	142	0
1206-0050	Receipt of Hardware	20	22JUL13	16AUG13	18SEP13	142	0
1206-0051	QA Inspection	4	19AUG13	22AUG13	02OCT13	142	0
1206-0055	Parts ready for installation	1	22AUG13	22AUG13	02DEC13	142	0

Fabrication / Assembly

1206-0054	Assembly of Components	20	21MAR12A	21MAR12A	27NOV13		100
1206-0053	Documentation: Assembly Procedures	15	02AUG13	22AUG13	30OCT13	166	0
1206-0057	Handling / Warehouse / Storage	5	16AUG13	22AUG13	09DEC13	166	0



Activity ID	Activity Description	Work Days	Forecast Start	Forecast Finish	BL FINISH	Total Float	% Comp	FY13												FY14												FY15														
								S	O	N	D	J	F	M	A	M	J	J	A	S	S	O	N	D	J	F	M	A	M	J	J	A	S	S	O	N	D	J	F	M	A	M	J	J	A	S
Job: 1207 - Vessel Legs -SMITH																																														
Final Design																																														
1207-0013	ME Analysis/CAD Model Iterations-Strss/EM/Therm	24	19MAY10A	22JUN10A	22JUN10A		100																																							
1207-0014	Analysis of Preliminary Design Approved	1	22JUN10A	22JUN10A	22JUN10A		100																																							
1207-0016	PDR	1	23JUN10A	23JUN10A	23JUN10A		100																																							
1207-0021	DOE CD-2 (Lehman) Review	1	10AUG10A	10AUG10A	10AUG10A		100																																							
1207-0030	N/A Dsgn Drawing Ready for Checking & Validation	1	16AUG10A	16AUG10A	16AUG10A		100																																							
1207-0028	Updt CAD & Dsgn Dwgs, (3 CAD/2dwg	132	17AUG10A	31JAN11A	04FEB11		100																																							
1207-0032	Analysis & Validation of Design Complete	285*	04OCT10A	21NOV11A	29APR11		100																																							
1207-0032A	Analysis/Valid of Dsgn Compl-VV Supp Foot Reinf	265	04OCT10A	24OCT11A			100																																							
1207-0033A	Upd CAD Models per Valid -VV Support Foot Reinfo	265	04OCT10A	24OCT11A			100																																							
1207-0034A	Rev Fab & Assembly Drwng -VV Support Foot Reinfo	265	04OCT10A	24OCT11A			100																																							
1207-0033	Update CAD Models per Validation	225	21FEB11A	16JAN12A	13MAY11		100																																							
1207-0034	Rev Fab & Assembly Drwngs per Valid	193	21FEB11A	21NOV11A	27MAY11		100																																							
1207-0036	Drawings ready for FDR	19	23MAY11A	17JUN11A	14JUN11		100																																							
1207-0038	FDR	3	22JUN11A	24JUN11A	15JUN11		100																																							
1207-0035	Review, Check Drawings	56*	25OCT11A	20JAN12A	13JUN11		100																																							
1207-0035A	Rev, Check Drwngs-VV Support Foot Reinfo	63	25OCT11A	30NOV11A			100																																							
1207-0033B	Upd CAD Models per Valid -VV Supp Attachmt Reinf	32	01NOV11A	16DEC11A			100																																							
1207-0034B	Rev Fab & Assembly Drwngs-VV Supp Attachmt Reinf	51*	01NOV11A	20JAN12A			100																																							
1207-0035B	Rev, Check Drwngs -VV Supp Attachmt Reinf	36*	22NOV11A	20JAN12A			100																																							
1207-0032B	Analysis/Valid of Dsgn Compl-VV Supp Attch Reinf	34*	28NOV11A	20JAN12A			100																																							
Procurement																																														
1207-0042A	Prep Req & Proc Pckg VV SUPP FOOT REINF:PLATES	3	21NOV11A	30NOV11A			100																																							
1207-0043	N/A Submit Req to Proc VV SUPP FOOT REINF	63	21NOV11A	31JAN12A	05FEB13		100																																							
1207-0043A	Submit Req to Proc VV SUPP FOOT REINF:PLATES	63*	21NOV11A	30NOV11A			100																																							
1207-0046	Eval Quotes	43	03JAN12A	25JAN12A	06MAY13		100																																							
1207-0043C	N/A Sub Req to Proc VV SUPP LEG ATTACH REPLACMT	1	05JAN12A	05JAN12A			100																																							
1207-0042	Prep Req & Proc Pckg VV SUPP FOOT REINF	3	09JAN12A	16JAN12A	05FEB13		100																																							
1207-0042B	Prep Req & Proc Pckg VV SUPP FOOT REINF:ANCHORS	3	09JAN12A	16JAN12A			100																																							
1207-0043B	N/A Sub Req to Proc VV SUPP FOOT REINF:ANCHORS	1	12JAN12A	12JAN12A			100																																							
1207-0042C	N/A Prep Req/Proc Pckg VV SUPP LEG ATTACH REPL	3	23JAN12A	25JAN12A			100																																							
1207-0050	Receipt of Hardware	87*	25JAN12A	28MAR12A	02AUG13		100																																							
1207-0044	N/A Procurement Processing	22*	31JAN12A	31JAN12A	06MAR13		100																																							
1207-0045	N/A Submit for Vendor Quotes	1	31JAN12A	31JAN12A	07MAR13		100																																							
1207-0048	N/A Award / Order Approved	1	31JAN12A	31JAN12A	07MAY13		100																																							
1207-0051	N/R QA Inspection	15	31JAN12A	31JAN12A	23AUG13		100																																							
1207-0052	N/A Resolve Procurement Issues	20	31JAN12A	31JAN12A	23SEP13		100																																							
1207-0055	N/A Parts ready for installation	1	31JAN12A	31JAN12A	24SEP13		100																																							

Activity ID	Activity Description	Work Days	Forecast Start	Forecast Finish	BL FINISH	Total Float	% Comp	FY13												FY14												FY15														
								S	O	N	D	J	F	M	A	M	J	J	A	S	S	O	N	D	J	F	M	A	M	J	J	A	S	S	O	N	D	J	F	M	A	M	J	J	A	S
1208-0045	N/R Submit for Vendor Quotes	5	28MAR12A	28MAR12A	15AUG12		100																																							
1208-0046	N/R Eval Quotes	5	28MAR12A	28MAR12A	15OCT12		100																																							
1208-0047	N/R Tech Eval of Vendors	5	28MAR12A	28MAR12A	15OCT12		100																																							
1208-0048	N/R Award / Order Approved	1	28MAR12A	28MAR12A	16OCT12		100																																							
1208-0052	N/R Resolve Procurement Issues	5	28MAR12A	28MAR12A	17APR13		100																																							
1208-0055	N/R Parts ready for installation	1	28MAR12A	28MAR12A	23MAY13		100																																							
1208-0042	Prep Req & Proc Pckg PF4/5 SUPPORT	10	30APR12A	30APR12A	16JUL12		100																																							
1208-0042A	Prep Req/Proc Pckg EXIST PF4/5 SUPP:REPLMT COLUM	10	30APR12A	30APR12A			100																																							
1208-0042B	Prep Req & Proc Pckg NEW PF4/5 SUPP COLUMN	10	30APR12A	30APR12A			100																																							
1208-0042C	Prep Req & Proc Pckg PF4/5 SUPP CLAMPS	10	30APR12A	30APR12A			100																																							
1208-0042D	Prep Req & Proc Pckg PF4/5 SUPP ASSEMBL	10	30APR12A	30APR12A			100																																							
1208-0049	Fab & Deliver incl Vendor Oversight	135*	21MAY12A	30NOV12	20MAR13	221	50	Fab & Deliver incl Vendor Oversight																																						
1208-0050	Receipt of Hardware	135*	21MAY12A	30NOV12	27MAR13	221	50	Receipt of Hardware																																						
1208-0051	QA Inspection	135*	21MAY12A	30NOV12	10APR13	221	50	QA Inspection																																						
1208-0043B	25Submit Req to Proc NEW PF4/5 SUPP COLUMN(BPA)	27*	07JUN12A	25JUN12A			100																																							
1208-0043A	Sub Req t/Proc EXIST PF4/5 SUPP:REPLMT COLUM(BPA)	20*	18JUN12A	29JUN12A			100																																							
1208-0043C	Submit Req to Proc PF4/5 SUPP CLAMPS(BPA)	20*	18JUN12A	29JUN12A			100																																							
1208-0043	N/R Submit Req to Proc PF4/5 SUPPORT(BPA)	13	26JUN12A	26JUN12A	16JUL12		100																																							
Fabrication / Assembly																																														
1208-0053	N/R Documentation: Assembly Procedures	10	28MAR12A	28MAR12A	01MAY13		100																																							
1208-0054	N/R Assembly of Components	15	28MAR12A	28MAR12A	22MAY13		100																																							
1208-0057	Handling / Warehouse / Storage	53*	17SEP12A	30NOV12	31MAY13	221	50	Handling / Warehouse / Storage																																						
Job: 1220 - Misc Structural Design-SMITH																																														
Final Design																																														
1220-1 PDR	Prelim Design Oversight	38	03MAY10A	24JUN10A	24JUN10A		100																																							
1220-2 FDR	Final Design Oversight (LOE)	190	25JUN10A	30SEP10A	30SEP10A		100																																							
1220-0016	Final Design Oversight (LOE)	522*	01OCT10A	31OCT12A	22JUN11		100	Final Design Oversight (LOE)																																						
1220-0017	Design/Analysis support from EMEM (Willard)	79	04OCT10A	31JAN11A	23DEC10		100																																							
1220-0017A	Analysis VV Dome/NB Port & PF2/3 Rib	270	05OCT10A	30SEP11A	01FEB11		100																																							
1220-0031	Misc/admin	518*	05OCT10A	29OCT12A	24JUN11		100	Misc/admin																																						
1220-0017B	VV & Support Structure - Peer Review	0		18MAY11A	30MAR11*		100																																							
1220-0020	Prep for FDR	5	09JUN11A	15JUN11A	15JUN11		100																																							
1220-0021A	Document design/validation	60*	01OCT12A	03JAN13	03JAN13	602	37	Document design/validation																																						
1220-0021B	CAM Effort/Oversight	120	01NOV12	30APR13	30APR13	602	0	CAM Effort/Oversight																																						
Job: 1300 - Center Stack-CHRZANOWSKI																																														
Final Design																																														
FY101300	FY10 Actual Cost	85	01JAN10A	30APR10A	30APR10A		100																																							
1300-0010	Engineering & Dsgn Supp-Final Design (LOE)	249	03MAY10A	29APR11A	29APR11		100																																							

Activity ID	Activity Description	Work Days	Forecast Start	Forecast Finish	BL FINISH	Total Float	% Comp	FY13												FY14												FY15											
								S O N D J F M A M J J A S												S O N D J F M A M J J A S												S O N D J F M A M J J A S											
FY101300A	FY10 Actual Cost (Corresponds to BCWP)	110	03MAY10A	30SEP10A	30SEP10A		100																																				
Title III																																											
1300-0011	Engineering and Design Support-Title III	604*	02MAY11A	30SEP13	21FEB14	477	63	Engineering and Design Support-Title III																																			
1300-0012	Eng Support-(Rafttopoulus/Zatz/Mardenfeld)	332*	01JUN12A	30SEP13	30SEP13	477	32	Eng Support-(Rafttopoulus/Zatz/Mardenfeld)																																			
1300-2000	Engineering Support	311*	02JUL12A	30SEP13	30SEP13	497	27	Engineering Support																																			
1300-2010	Design Support	39*	13AUG12A	28SEP12A	28SEP12		100	Design Support																																			
1300-2020	Assembly Drawings Design Support-Title III	122*	01OCT12A	01APR13	01APR13	623	18	Assembly Drawings Design Support-Title III																																			
Job: 1301 - Outer TF Coils-CHRZANOWSKI																																											
Final Design																																											
FY101301	FY10 Actual Cost	22	01APR10A	30APR10A	30APR10A		100																																				
FY101301A	FY10 Actual Cost	20	03MAY10A	28MAY10A	28MAY10A		100																																				
Procurement																																											
1301-0010	Revise Outer TF Coil (OTF) Drawings	20	14DEC11A	18JAN12A	30JUL12		100																																				
1301-0020	9595Generate Spec & SOW for OTF Purchase	29	31JAN12A	16MAR12A	13AUG12		100																																				
1301-0100	Prep Req & Submit to Proc-Support Castings/Clamp	15	13FEB12A	17FEB12A	24SEP12		100																																				
1301-0110	Bid & Award AI Supp Castings & SS Supp Clamps	45*	20FEB12A	05APR12A	05NOV12		100																																				
1301-0030	Prep OTF Req Submit to Procurement	5	16APR12A	20APR12A	20AUG12		100																																				
1301-0040	Bid & Award OTF Manufacturing	58*	16APR12A	27JUN12A	02OCT12		100																																				
1301-0120	Fab & Del AI Supp Castings & SS Supp Clamps	113*	18JUN12A	27NOV12	11JAN13	253	50	Fab & Del AI Supp Castings & SS Supp Clamps																																			
1301-0050	Provide Existing OTF Tooling to Vendor	1	20JUL12A	20JUL12A	03OCT12		100																																				
1301-0060	Manufacture (2) OTF Coil	102*	20AUG12A	22JAN13	22JAN13	220	25	Manufacture (2) OTF Coil																																			
1301-0180	N/R Purchase Copper Fittings	20	31OCT12*	29NOV12	22OCT12	251	0	N/R Purchase Copper Fittings																																			
Epoxy/Glass for support blocks																																											
1301-0150	Bid & Award Epoxy/Glass for support blocks	30	01NOV12	14DEC12	05NOV12	200	0	Bid & Award Epoxy/Glass for support blocks																																			
1301-0160	Fab & Del Epoxy/Glass	40	17DEC12*	19FEB13	11JAN13	200	0	Fab & Del Epoxy/Glass																																			
Fabrication / Assembly																																											
1301-0200	Setup work area to install Supports	10	06FEB13	19FEB13	22JAN13	200	0	Setup work area to install Supports																																			
1301-0210	Install alum blocks & SS support clamps	30	20FEB13	02APR13	05MAR13	200	0	Install alum blocks & SS support clamps																																			
Job: 1303 - R&D for TF Joint -KOZUB																																											
Material for CSU R&D Plan																																											
Final Design																																											
1303-000A	1.2 Fatigue Test Verification - C18150 (TBD)	101	01SEP10A	31JAN11A	19NOV10		100																																				
Single Flex Laminate CSU R&D Plan																																											
Final Design																																											
1303-000B2	2.2 In-Place Bending Stiffness	100	01SEP10A	31JAN11A	15DEC10		100																																				
1303-000B3	2.3 Cyclic, Simulated Combined Tests	100	01SEP10A	31JAN11A	15DEC10		100																																				
Full Flex Assembly CSU R&D Plan																																											
Final Design																																											
1303-000C1	3.1 Selection Braze vs Solder Between Laminates	1	15SEP10A	15SEP10A	15SEP10A		100																																				

Activity ID	Activity Description	Work Days	Forecast Start	Forecast Finish	BL FINISH	Total Float	% Comp	FY13												FY14												FY15											
								S O N D J F M A M J J A S												S O N D J F M A M J J A S												S O N D J F M A M J J A S											
1304-0951C	Receive & inspect Quadrant #1 (Conductors 5-9)	35*	16APR12A	31MAY12A	17AUG12		100																																				
1304-0950A	Receive & inspect Quadrant #1 (Conductors 1 & 2)	4	20APR12A	24APR12A	06AUG12		100																																				
1304-0951B	Receive & inspect Quadrant #1 (Conductors 3 & 4)	1	24APR12A	24APR12A	09AUG12		100																																				
1304-09502	Receive & inspect Quadrant #2 Conductors	68*	15MAY12A	21AUG12A	30AUG12		100																																				
1304-1000	Straigten Conductors	1	10SEP12A	21SEP12A	01OCT12		100																																				
1304-09503	Receive & inspect Quadrant #3 Conductors	33*	20SEP12A	19OCT12A	06SEP12		100																																				
1304-09504	Receive & inspect Quadrant #4 Conductors	24*	22OCT12A	26NOV12	25OCT12	55	30																																				
1304-09505	Receive 5th Delivery of Final Machined TF Cond	1	27NOV12	27NOV12	26OCT12	668	0																																				
1304-09506	Receive & inspect Quadrant #5 Conductors	1	08JAN13	08JAN13	27NOV12	646	0																																				
1304-09507	Transfer Quadrant #5 Conductors to Warehouse	1	15JAN13	15JAN13	04DEC12	677	0																																				
1304-09508	Receive & inspect Quadrant #6 Conductors	1	15FEB13	15FEB13	07JAN13	646	0																																				
1304-09509	Transfer Quadrant #6 Conductors to Warehouse	1	20FEB13	20FEB13	10JAN13	651	0																																				
1304-0950B	Receive Balance of Final Machined TF Cond	1	27FEB13*	27FEB13	01OCT12	646	0																																				
Other Inner TF Bundle Hardware																																											
Procurement																																											
1304-1210	Prep Req for Up/Lwr OF to TF Supp Struct	10	14NOV11A	30NOV11A	15OCT12		100																																				
1304-1212	Bid/Award Up/Lwr OH to TF Supp Struct	30	01DEC11A	22DEC11A	28NOV12		100																																				
1304-1220	Pre Req for Cooling Fittings	10	19JAN12A	25JAN12A	15OCT12		100																																				
1304-1214	Fab & Del Up/Lwr OH to TF Supp Struct	65*	23JAN12A	20APR12A	01MAR13		100																																				
1304-1222	Bid/Award Cooling Fittings (TF)	14*	25JAN12A	09FEB12A	28NOV12		100																																				
1304-1224	Fab & Deliver Cooling Fittings (TF)	177	17FEB12A	05JUN13	04JAN13	177	50																																				
1304-1120	Prep Req for Flex Bus Fabrication(72 Assembly)	10	23JUL12A	31JUL12A	16AUG13		100																																				
1304-1230	N/R Prep Req f/Tooling f/Inst Flex Bus Segments	10	31JUL12A	31JUL12A	15OCT12		100																																				
1304-1130	Prep Req for Cu-Cr-Zr for OTF Lead Ext	10	01AUG12A	09AUG12A	12OCT12		100																																				
1304-1140	Prep Req for OTF Lead Ext (OTF to Flex)	10	01AUG12A	09AUG12A	17SEP12		100																																				
1304-1122	Bid/Award Flex Bus Fabrication(72 Assembly)	6	27AUG12A	31AUG12A	30SEP13		100																																				
1304-1124	Fab & Deliver Flex Bus (72 Assembly)	150*	17SEP12A	25APR13	06JAN14	253	30																																				
Copper for Lead Lead Ext for Upper ITF																																											
1304-1190	Prep Spec Copper for Lead Ext for Upper ITF	10	03DEC12	14DEC12	15OCT12	202	0																																				
1304-1192	Bid/Award - Copper Lead Ext for Upper ITF	30	17DEC12	05FEB13	28NOV12	202	0																																				
1304-1194	Fab & Deliver Copper Lead Ext for Upper ITF	60	06FEB13	30APR13	01MAR13	202	0																																				
Cu-Cr-Zr for OTF Lead Ext																																											
1304-1132	Bid/Award Cu-Cr-Zr for OTF Lead Ext	77*	14AUG12A	03DEC12	27NOV12	241	5																																				
1304-1134	Fab & Del Cu-Cr-Zr for OTF Lead Ext	60	04DEC12	06MAR13	28FEB13	241	0																																				
Joint Hardware																																											
1304-1180	Prep Req Joint Hardware	10	26OCT12A	26OCT12A	15NOV12		100																																				
1304-1182	Bid/Award Joint Hardware	30	26OCT12A	31OCT12A	09JAN13		100																																				
1304-1184	Fab & Deliver Joint Hardware	30	31OCT12	13DEC12	20FEB13	293	0																																				
Lower TF Coil to Bus Jump & Supp																																											
1304-1160	Prep Req Lower TF Coil to Bus Jump & Supp	10	04MAR13	15MAR13	14DEC12	164	0																																				

Activity ID	Activity Description	Work Days	Forecast Start	Forecast Finish	BL FINISH	Total Float	% Comp	Schedule (FY13 - FY15)																												
								FY13												FY14												FY15				
								S	O	N	D	J	F	M	A	M	J	J	A	S	O	N	D	J	F	M	A	M	J	J	A	S	O	N	D	J
OH Conductor & Other Hardware																																				
Procurement																																				
1305-0920	Generate SOW for OH Conductor	24	15AUG11A	16SEP11A	10AUG12		100																													
1305-0930	Prep Requisition & Submit to Procurement	5	19SEP11A	23SEP11A	17AUG12		100																													
1305-0940	Bid & Award OH Conductor Fabrication (PF)	29	03OCT11A	21NOV11A	01OCT12		100																													
1305-1010	Prep Requisition for Belleville Washer Assembly	95*	24OCT11A	30NOV11A	24AUG12		100																													
1305-1030	Bid & Award Belleville Washer Assembly	127*	24OCT11A	23FEB12A	08OCT12		100																													
1305-0960	Generate Requisition for Kapton/Glass Insulation	47	07NOV11A	18JAN12A	17AUG12		100																													
1305-0980	Bid & Award Kapton/Glass Insulation	7	07NOV11A	20DEC11A	01OCT12		100																													
1305-0950	Manufacture OH Copper Conductor	121*	01DEC11A	25MAY12A	18JAN13		100																													
1305-1050	Fab & Deliver Belleville Washer Assembly	234*	19DEC11A	21NOV12	19DEC12	164	95	Fab & Deliver Belleville Washer Assembly																												
1305-1000	Fab & Deliver Kapton/Glass Insulation(OH)	50	09JAN12A	23MAR12A	12DEC12		100																													
1305-1110	Prep Requisition for Lead Blocks & Cooling Fitti	10	01FEB12A	09FEB12A	24AUG12		100																													
1305-1210	Prep Requisition for OH Lwr Lead & Suppt Struct	10	01FEB12A	09FEB12A	31AUG12		100																													
1305-1130	Bid & Award Lead Blocks & Cooling Fittings	34*	20FEB12A	29FEB12A	08OCT12		100																													
1305-1230	Bid & Award OH Lwr Lead & Supt Struct	30	20FEB12A	24FEB12A	15OCT12		100																													
1305-1250	Fab & deliver OH Lwr Lead & Suppt Struct	41*	24FEB12A	20APR12A	18JAN13		100																													
1305-1150	Fab & Deliver Lead Blocks & Cooling Fittings	66*	01MAR12A	30OCT12	08FEB13	180	75	Fab & Deliver Lead Blocks & Cooling Fittings																												
1305-0940A	Prep Sample for Rad Insp of OH Conductor	2	13AUG12A	14AUG12A	02AUG12		100																													
1305-0940B	Radiological Inspection of OH Conductor	18*	27AUG12A	13SEP12A	04SEP12		100	Radiological Inspection of OH Conductor																												
1305-1060	Prepare Requisition for G-10 Fillers	10	04SEP12A	04SEP12A	24AUG12		100	Prepare Requisition for G-10 Fillers																												
1305-1080	Bid & Award G-10 Fillers	25	04SEP12A	04SEP12A	08OCT12		100	Bid & Award G-10 Fillers																												
1305-1100	Fab & Deliver G-10 Filers	49*	04SEP12A	09NOV12	11JAN13	132	0	Fab & Deliver G-10 Filers																												
1305-3200	G-10 Filler modifications	40	12NOV12	17JAN13	29NOV11	132	0	G-10 Filler modifications																												
Misc Parts OH Cond																																				
1305-1160	Prep Requisition for Misc Parts OH Cond	10	01NOV12	14NOV12	31AUG12	83	0	Prep Requisition for Misc Parts OH Cond																												
1305-1180	Bid & Award Misc Parts OH Cond	30	15NOV12	08JAN13	15OCT12	83	0	Bid & Award Misc Parts OH Cond																												
1305-1200	Fab & Deliver Misc Parts OH Cond	56	09JAN13	27MAR13	18JAN13	83	0	Fab & Deliver Misc Parts OH Cond																												
Inner TF Conductor Receipt/Inspection/Prep																																				
Fabrication / Assembly																																				
1304-1309A	OH Autopsy	0		29FEB12A			100																													
1305-3554	TF Cooling Tube Soldering Support	89*	01JUN12A	28SEP12A	28SEP12		100	TF Cooling Tube Soldering Support																												
1304-3554B	TF Cooling Tube Soldering Support	121*	02JUL12A	21DEC12	21DEC12	124	70	TF Cooling Tube Soldering Support																												
Inner TF Quadrant 1																																				
CAS/RESA																																				
1304-1330	Solder cooling tubes Quadrant#1 (Conductors 1&2)	9	21MAY12A	25MAY12A	14AUG12		100																													
1304-1340	Grind TF conductors-post solder Quadrant#1(1&2)	2	23MAY12A	29MAY12A	16AUG12		100																													
1304-13302	Solder cooling tubes Quadrant#1 (Conductors 3&4)	12*	25MAY12A	31MAY12A	23AUG12		100																													
1304-1340A	Transfer TF conductor CS Coil Area Quadrnt#1(1&2)	1	25MAY12A	25MAY12A	17AUG12		100																													
1304-13402	Cleanup TF conductors-post solder Quadrant#1(3&4)	14*	29MAY12A	31MAY12A	27AUG12		100																													
1304-13405	Transfer TF conductor CS Coil Area Quadrnt#1(3&4)	1	31MAY12A	31MAY12A	28AUG12		100																													

Activity ID	Activity Description	Work Days	Forecast Start	Forecast Finish	BL FINISH	Total Float	% Comp	FY13												FY14												FY15														
								S	O	N	D	J	F	M	A	M	J	J	A	S	S	O	N	D	J	F	M	A	M	J	J	A	S	S	O	N	D	J	F	M	A	M	J	J	A	S
1307-1040	Compl Maintain Heat Balance Cooling Calcs Pete T	295*	13AUG10A	17OCT11A	31JAN11		100																																							
1307-1050	Integrate Thermal, Halo, Dsir Loads into Calcs P	344*	04OCT10A	22FEB12A	28FEB11		100																																							
1307-1060	Fatigue Assessments Pete T.	187	20DEC10A	31AUG11A	07MAR11		100																																							
1307-1010A	Complete CAD Detail & Assy Drawings (Final)	107	31MAR11A	30AUG11A	07APR11		100																																							
1307-1150	Prepare for FDR	24	16MAY11A	17JUN11A	15APR11		100																																							
1307-1155	CS Casing Assembly - Peer review	0		18MAY11A			100																																							
1307-2340	Design Stud Installation Fixture	20	31OCT12	29NOV12	30OCT12	283	0	Design Stud Installation Fixture																																						
Procurement																																														
1307-2040	Spec/Requisition Inconel Bellows	20	19SEP11A	29SEP11A	28OCT11		100																																							
1307-2050	Bid/Award Inconel Bellows	47*	03OCT11A	08DEC11A	13DEC11		100																																							
1307-2130	Spec/Requisition CS Casing Support Structure	20	03OCT11A	27OCT11A	01OCT12		100																																							
1307-2010	Prep CS Casing SOW & Requisition	20	17OCT11A	28OCT11A	30JAN12		100																																							
1307-2140	Bid/Award CS Casing Support Structure	30	01NOV11A	18NOV11A	12NOV12		100																																							
1307-2150	Fab & Deliver CS Casing Support Structure	42*	21NOV11A	25JAN12A	15MAR13		100																																							
1307-2060	Fab & Deliver Inconel Bellows	106	09DEC11A	25JAN12A	14MAR12		100																																							
1307-2190	N/R - Spec/Requisition Misc M&S	20	21DEC11A	21DEC11A	21OCT11		100																																							
1307-2020	Bid/Award CS Casing Contract	2	06JAN12A	09JAN12A	12MAR12		100																																							
1307-2030	Fabricate CS Casing	230*	10JAN12A	03DEC12	04FEB13	193	75	Fabricate CS Casing																																						
1307-2070	Spec/Requisition Rotatable Flanges	20	15JAN12A	20JAN12A	01OCT12		100																																							
1307-2080	Bid/Award Rotatable Flanges	30	23JAN12A	25JAN12A	12NOV12		100																																							
1307-2090	Fab & Deliver Rotatable Flanges	60	25JAN12A	31JAN12A	06JAN14		100																																							
1307-2030A	Placement of Order for Inconel 625 Plate Materl	1	29FEB12A	29FEB12A	25JUN12		100																																							
1307-2030B	Placement of Order for Inconel Ring Forging	1	29FEB12A	29FEB12A	25JUN12		100																																							
1307-2030C	Complt of Work f/CS Casing DWGS1436/37/39/26/2 7	103*	14MAY12A	28SEP12A	10OCT12		100	Complt of Work f/CS Casing DWGS1436/37/39/26/2 7																																						
1307-2030D	Complt Manufacturing f/CS Casing DWG EDC1443	52*	26OCT12A	18JAN13	30JAN13	193	80	Complt Manufacturing f/CS Casing DWG EDC1443																																						
1307-2350	Fabricate Fixture for Stud Installation	20	30NOV12*	07JAN13	29NOV12	283	0	Fabricate Fixture for Stud Installation																																						
1307-2030E	Receipt/QA Insp Complete-Inconel Casing Assembly	1	19FEB13	19FEB13	01MAR13	193	0	Receipt/QA Insp Complete-Inconel Casing Assembly																																						
CB SS Structure																																														
1307-2250	Spec/Requisition CB SS Structure	137	03OCT11A	08JAN13	21OCT11	126	75	Spec/Requisition CB SS Structure																																						
1307-2260	Bid/Award CB SS Structure	20	09JAN13*	05FEB13	06DEC11	126	0	Bid/Award CB SS Structure																																						
1307-2270	Fab & Deliver CBSS Structure(M&S)	60	06FEB13	30APR13	07MAR12	180	0	Fab & Deliver CBSS Structure(M&S)																																						
1307-2270A	Fab/Deliver Ceramic Break SS Struct (+M&S)	60	06FEB13	30APR13	30APR13	180	0	Fab/Deliver Ceramic Break SS Struct (+M&S)																																						
CHI Copper Leads																																														
1307-2100	Spec/Requisition CHI Copper Leads U&L	43*	01AUG12A	28SEP12A	28AUG12		100	Spec/Requisition CHI Copper Leads U&L																																						
1307-2110	Bid/Award CHI Copper Leads	22*	02OCT12A	22OCT12A	10OCT12		100	Bid/Award CHI Copper Leads																																						
1307-2120	Fab & Deliver CHI copper Leads U&L	64*	26OCT12A	05FEB13	15JAN13	301	80	Fab & Deliver CHI copper Leads U&L																																						
Ceramic Insulators																																														
1307-2220	Spec/requisition Ceramic Insulators	20	31OCT12*	29NOV12	01OCT12	252	0	Spec/requisition Ceramic Insulators																																						
1307-2230	Bid/Award Ceramic Insulators	30	30NOV12	21JAN13	12NOV12	252	0	Bid/Award Ceramic Insulators																																						
1307-2240	Fab & Deliver Ceramic Insulators	60	22JAN13	15APR13	15FEB13	252	0	Fab & Deliver Ceramic Insulators																																						

Activity ID	Activity Description	Work Days	Forecast Start	Forecast Finish	BL FINISH	Total Float	% Comp	FY13												FY14												FY15											
								S	O	N	D	J	F	M	A	M	J	J	A	S	S	O	N	D	J	F	M	A	M	J	J	A	S	S	O	N	D	J	F	M	A	M	J
Misc M&S																																											
1307-2200	Bid/Award Misc M&S		30	31OCT12*	13DEC12	06DEC11	148	0																																			
1307-2210	Fab & deliver Misc M&S	134	14DEC12	01JUL13	07MAR12		148	0																																			
Organ Pipe adapters & Feedthrus																																											
1307-2310	Spec/Requisition Organ Pipe Adapters & Feedthrus	20	31OCT12*	29NOV12	01OCT12		223	0																																			
1307-2320	Bid/Award Organ Pipe Adapters & Feedthrus	30	30NOV12	21JAN13	12NOV12		223	0																																			
1307-2330	Fab & Deliver Organ Pipe Adapters & Feedthrus	50	22JAN13	01APR13	01FEB13		223	0																																			
Viton O rings																																											
1307-2280	Spec/Requisition Viton O Rings	20	20JUN13	19JUL13	01OCT12		126	0																																			
1307-2290	Bid/Award Viton O Rings	30	22JUL13	30AUG13	12NOV12		126	0																																			
1307-2300	Fab & Deliver Viton O Rings	30	03SEP13	14OCT13	04JAN13		126	0																																			
Weld Material																																											
1307-2160	Spec/Requisition Weld Material	20	31OCT12*	29NOV12	21OCT11		202	0																																			
1307-2170	Bid/Award Weld Material	30	30NOV12	21JAN13	06DEC11		202	0																																			
1307-2180	Fab & Deliver Weld Material	60	22JAN13	15APR13	07MAR12		202	0																																			
Fabrication / Assembly																																											
1307-2030F	Setup casing for Inconel studs	5	20FEB13	26FEB13	08MAR13		193	0																																			
1307-3010	Assemble & Test Ceramic Breaks incl PF1C Coil	20	16SEP13	11OCT13	10JAN14		127	0																																			
Job: 1310 - CSU Magnet Systems-CHRZANOWSKI																																											
Final Design																																											
FY101310	FY10 Actual Cost	143	01OCT09A	30APR10A	30APR10A			100																																			
Job: 1302 - Center Stack Assembly-CHRZANOWSKI																																											
Final Design																																											
1305-0200	Analysis of Mfg Tooling & CS Support Fixture	138*	19DEC11A	09JUL12A	29NOV11			100																																			
Fabrication / Assembly																																											
1302-0050	CAD Support for Setup of CS Assembly Area	303*	16APR12A	01JUL13	04NOV11		129	20																																			
1302-0050A	CAD Support f/Setup of CS Assembly Area(+MHRS)	39	02JUL12A	04JAN13	05OCT12		254	10																																			
1302-0060	Generate CS Assembly Procedure	10	03DEC12	14DEC12	07OCT11		261	0																																			
1302-0070	Generate CS Installation Procedure	10	02JAN13	15JAN13	21OCT11		266	0																																			
1302-0210	Install Inconel Weld Studs on Casing Wall	14	27FEB13	18MAR13	28MAR13		193	0																																			
1302-0080	Built New CS Assembly Fixture	20	04JUN13	01JUL13	23OCT13		148	0																																			
1302-0210A	Mount tiles to Inconel casing	35	07JUN13	29JUL13	12AUG13		136	0																																			
1302-0090	Setup CS Assembly Area	30	02JUL13	14AUG13	25SEP13		129	0																																			
1302-0200	Receive CS Vacuum Casing	1	02JUL13	02JUL13	24OCT13		148	0																																			
1302-0220	Mount Upper & Lower PF1B Coils to CS Casing	10	03JUL13	18JUL13	07NOV13		148	0																																			
1302-0160	Receive & Inspect Inner PF Coils	5	16SEP13	20SEP13	10DEC13		99	0																																			

Activity ID	Activity Description	Work Days	Forecast Start	Forecast Finish	BL FINISH	Total Float	% Comp	FY13 FY14 FY15																																		
								FY13												FY14												FY15										
								S	O	N	D	J	F	M	A	M	J	J	A	S	S	O	N	D	J	F	M	A	M	J	J	A	S	S	O	N	D	J	F	M	A	M

Job: 2420 - 2nd NBI Sources-CROPPER

Design							
Final Design							
24200020	PDR Prep PPL	26	17MAY10A	22JUN10A	22JUN10A		100
24200050	CONDUCT PDR	1	23JUN10A	23JUN10A	23JUN10A		100
24200059	Peer Review	0		14APR11A	31MAR11		100
24200060	FDR Prep PPL	13*	01JUN11A	17JUN11A	14JUN11		100
24200090	CONDUCT FDR	3	22JUN11A	24JUN11A	15JUN11		100

Procure, Fab & Assembly							
Procurement							
24200100	Prep Requisition and procurement package	46	10SEP11A	28OCT11A	21MAY13		100
24200110	SUBMIT REQ TO PROCUREMENT	41	17SEP11A	28OCT11A	22MAY13		100
24200120	Procurement lead time (1)	15	24OCT11A	28OCT11A	13JUN13		100
24200130	AWARD	1	28OCT11A	28OCT11A	14JUN13		100
24200150	Fabricate or delivery Sources	40	12MAR12A	15MAR12A	13AUG13		100

Fabrication / Assembly							
24200160	N/R Refurbish Source A	90	28OCT11A	28OCT11A	28OCT11A		100
24200170	N/R Refurbish Source B	70	28OCT11A	28OCT11A	28OCT11A		100
24200180	N/R Refurbish Source C	80	28OCT11A	28OCT11A	28OCT11A		100
24200200	N/R Build Probe tips (10 Long, 20 short)	60	28OCT11A	28OCT11A	28OCT11A		100

Job: 2425 - BL Relocation-ATNAFU

Design							
Final Design							
FY092425	FY09 Actual Cost	22*	23FEB09A	30SEP09A	30SEP09A		100
FY102425	FY10 Actual Cost	143	01OCT09A	30APR10A	30APR10A		100
2425-0017	Design Drawings	24	03MAY10A	04JUN10A	04JUN10A		100
FY102435A	FY10 Actual Cost	110	03MAY10A	30SEP10A	30SEP10A		100
2425-0018	PDR Prep	11	07JUN10A	21JUN10A	21JUN10A		100
2425-0019	CONDUCT PDR	2	22JUN10A	23JUN10A	23JUN10A		100
2425-0023	Disposition PDR Chits	2	24JUN10A	25JUN10A	25JUN10A		100
2425-0020	Layman Review	5	10AUG10A	16AUG10A	16AUG10A		100
2425-0024	Design Drawings	177*	01OCT10A	17JUN11A	16MAR11		100
2425-0025	Update Analyses	177*	01OCT10A	17JUN11A	16MAR11		100
2425-0026	Update Cost & Schedule Estimate	81*	15FEB11A	08JUN11A	28MAR11		100
2425-0027A	Peer Review	0		14APR11A	31MAR11		100
2425-0028	FDR Prep	30*	06MAY11A	17JUN11A	10JUN11		100

Activity ID	Activity Description	Work Days	Forecast Start	Forecast Finish	BL FINISH	Total Float	% Comp	FY13 FY14 FY15																																		
								FY13												FY14												FY15										
								S	O	N	D	J	F	M	A	M	J	J	A	S	S	O	N	D	J	F	M	A	M	J	J	A	S	S	O	N	D	J	F	M	A	M
Job: 2430 - 2nd NBI Decontamination-STEVENSON																																										
Decontamination																																										
FY092430	FY09 Actual Cost	22*	23FEB09A	30SEP09A	30SEP09A		100																																			
24300230	Decon Calorimeter	30	01OCT09A	11NOV09A	11NOV09A		100																																			
FY102430	FY10 Actual Cost	143	01OCT09A	30SEP10A	30SEP10A		100																																			
24300240	Decon Ion Dump	42	03MAY10A	30JUN10A	30JUN10A		100																																			
24300280	Decon 90 inch flange & neutralizer	63	03MAY10A	30JUL10A	30JUL10A		100																																			
24300400	Decon Procurement Support - Material & Supplies	121*	03MAY10A	30SEP10A	30SEP10A		100																																			
24300260	Decon Bending Magnet	25	26MAY10A	30JUN10A	30JUN10A		100																																			
24300310	Decon BL Lid	9	18JUN10A	30JUN10A	30JUN10A		100																																			
24300370	Decon BL Box	11	13AUG10A	27AUG10A	27AUG10A		100																																			
24300380	Decon BL exterior & accoutrements	49*	13AUG10A	30SEP10A	30SEP10A		100																																			
24300300	Decon Exit Spool Piece	36*	01SEP10A	30SEP10A	30SEP10A		100																																			
24300390	Decon Program Evaluation/Operation Impact Report	10	01SEP10A	30SEP10A	30SEP10A		100																																			
FY112430	FY10 Actual Cost	143	01OCT10A	29OCT10A	29OCT10A		100																																			
24300399	DECON COMPLETE	0		21OCT10A	21OCT10A		100																																			
Job: 2440 - 2nd NBI Beamline-CROPPER																																										
Procure, Fab & Assembly																																										
Procurement																																										
2440-0003	Calorimeter parts	88	26AUG11A	09JAN12A	24APR12		100																																			
2440-0004	Ion Dump parts	237*	31AUG11A	31JUL12A	15FEB12		100																																			
2440-0006	90 inch flange and neutralizer parts	225*	16JAN12A	30OCT12A	28FEB13		100	90 inch flange and neutralizer parts																																		
2440-0005	Magnet parts	41	12MAR12A	22MAR12A	01MAR13		100	_____																																		
2440-0007	N/R Exit spool piece parts	22	17MAY12A	17MAY12A			100																																			
2440-0008	BL Lid parts	65	18JUN12A	28JUN12A	11DEC12		100	_____																																		
2440-0009	BL Box parts	65	18JUN12A	28JUN12A	28SEP12		100	_____																																		
Refurbishment																																										
2440-0011	Calorimeter TC wiring	204*	16JAN12A	30OCT12	24APR12	294	90	Calorimeter TC wiring																																		
2440-0013	Magnet TC wiring	41	12MAR12A	22MAR12A	01MAR13		100	_____																																		
2440-0015	N/R Exit spool piece TC wiring (refurb/relocate)	22	17MAY12A	17MAY12A			100																																			
2440-0012	Ion Dump TC wiring	95*	18JUN12A	30OCT12	24JAN12	294	40	Ion Dump TC wiring																																		
Title III																																										
2440-0001	Begin refurbishment job parts list	143*	01OCT10A	31JAN11A	01FEB11		100																																			
2440-0002	Prepare drawings	523*	01OCT10A	01NOV12	01MAR13	292	70	Prepare drawings																																		
2440-0002A	Engineering Supervision	523*	01OCT10A	01NOV12	26APR13	292	65	Engineering Supervision																																		
2440PEER	Peer Review	0		14APR11A	31MAR11		100																																			

Activity ID	Activity Description	Work Days	Forecast Start	Forecast Finish	BL FINISH	Total Float	% Comp	FY13												FY14												FY15														
								S	O	N	D	J	F	M	A	M	J	J	A	S	S	O	N	D	J	F	M	A	M	J	J	A	S	S	O	N	D	J	F	M	A	M	J	J	A	S
Midplane Bay K																																														
Final Design																																														
FY092440	FY09 Actual Cost	22*	23FEB09A	30SEP09A	30SEP09A		100																																							
FY102440	FY10 Actual Cost	100	01DEC09A	30APR10A	30APR10A		100																																							
FY102440A	FY10 Actual Cost	1	03MAY10A	30SEP10A	30SEP10A		100																																							
Refurbishment																																														
Refurbishment																																														
2440-0017A	Radiation Supplies (M&S)	644*	01NOV10A	03JUN13	20MAY13	150	64	[Gantt bar]												Radiation Supplies (M&S)																										
2440-0017B	Test Cell Maintenance	578*	01NOV10A	28FEB13	30OCT12	216	65	[Gantt bar]												Test Cell Maintenance																										
2440-0028	Refurbish Ion Dump	450*	07FEB11A	15NOV12	23APR12	294	70	[Gantt bar]												Refurbish Ion Dump																										
2440-0030	Refurbish Calorimeter	308*	22AUG11A	09NOV12	24APR12	294	90	[Gantt bar]												Refurbish Calorimeter																										
2440-0022	Refurbish 90 inch flange and neutralizer	298*	06SEP11A	09NOV12	28FEB13	286	85	[Gantt bar]												Refurbish 90 inch flange and neutralizer																										
2440-0018	Refurbish BL Box	157*	16JAN12A	28JUN12A	28SEP12		100	[Gantt bar]																																						
2440-0020	Refurbish BL Lid	119*	16JAN12A	31MAY12A	11DEC12		100	[Gantt bar]																																						
2440-0026	N/R Refurbish(Fabricate) spool piece	64	17MAY12A	17MAY12A			100	[Gantt bar]																																						
Testing																																														
2440-0031	Modify to New style	257*	24OCT11A	31OCT12	10MAY13	293	90	[Gantt bar]												Modify to New style																										
2440-0033	Reassembly & Test & relocate - Deleted ECP-056	60	19OCT12A	19OCT12A	19OCT12A		100	[Gantt bar]												Reassembly & Test & relocate - Deleted ECP-056																										
Job: 2450 - 2nd NBI Services-ATNAFU																																														
Design																																														
Final Design																																														
FY092450	FY09 Actual Cost	22*	23FEB09A	30SEP09A	30SEP09A		100																																							
FY102450	FY10 Actual Cost	143	01OCT09A	30APR10A	30APR10A		100																																							
2450-0017	Design Drawings	25	03MAY10A	07JUN10A	07JUN10A		100																																							
FY102450A	FY10 Actual Cost	110	03MAY10A	30SEP10A	30SEP10A		100																																							
2450-0019	CONDUCT PDR	2	22JUN10A	23JUN10A	23JUN10A		100																																							
2450-0018	PDR Prep	10	23JUN10A	24JUN10A	24JUN10A		100																																							
2450-0022	Disposition PDR Chits	2	24JUN10A	25JUN10A	25JUN10A		100																																							
2450-0020	Lehman Review	5	10AUG10A	16AUG10A	16AUG10A		100																																							
2450-0023	Design Drawings	177*	01OCT10A	17JUN11A	28MAR11		100																																							
2450-0024	Update Analyses	84*	21FEB11A	17JUN11A	04APR11		100																																							
2450-0025	Update Cost & Schedule Estimate	84*	21FEB11A	17JUN11A	13APR11		100																																							
2450-PEER	Peer Review	0		14APR11A	31MAR11		100																																							

Activity ID	Activity Description	Work Days	Forecast Start	Forecast Finish	BL FINISH	Total Float	% Comp	FY13 FY14 FY15																																			
								FY13												FY14												FY15											
								S	O	N	D	J	F	M	A	M	J	J	A	S	O	N	D	J	F	M	A	M	J	J	A	S	O	N	D	J	F	M	A	M	J	J	A
2450-0027	FDR Prep	15*	27MAY11A	17JUN11A	13JUN11		100																																				
2450-0028	CONDUCT FDR 2450	3	22JUN11A	24JUN11A	15JUN11		100																																				
2450-0026	Prep Procurement Specs	336*	22AUG11A	21DEC12	27APR11	139	60	Prep Procurement Specs																																			
Procure, Fab & Assembly																																											
Procurement																																											
2450-0032	Prep Requisition & procurement pckg - Cyro parts	131*	21NOV11A	28MAR12A	15MAY13		100																																				
2450-0033	SUBMIT REQ TO PROCUREMENT - Cyro parts	132*	21NOV11A	28MAR12A	16MAY13		100																																				
2450-0034	Procurement lead time (1) - Cyro parts	162*	21NOV11A	28MAR12A	28JUN13		100																																				
2450-0035	AWARD - Cyro parts	163*	21NOV11A	28MAR12A	01JUL13		100																																				
2450-0036	Fabricate or delivery - Cyro parts	159*	20FEB12A	29MAR13	07NOV13	360	30	Fabricate or delivery - Cyro parts																																			
2450-0038	Prep Requisitn & procuremnt pckg - Pipe & misc.	37*	11JUN12A	26JUL12A	16MAY13		100																																				
2450-0039	SUBMIT REQ TO PROCUREMENT - Pipe & misc.	37*	11JUN12A	26JUL12A	17MAY13		100																																				
2450-0040	Procurement lead time (1) - Pipe & misc.	45*	11JUN12A	26JUL12A	01JUL13		100																																				
2450-0041	AWARD - Pipe & misc.	59*	11JUN12A	26JUL12A	02JUL13		100																																				
2450-0042	Fabricate or delivery - Pipe & misc.	217*	18JUN12A	01MAY13	04OCT13	139	25	Fabricate or delivery - Pipe & misc.																																			
Installation																																											
2450-0102	Platform Mods	504*	19AUG11A	27AUG13	20JAN14	176	15	Platform Mods																																			
2450-0097	FAB/ASSEMBLY Legs (TECH SHOP)	101*	22AUG11A	23DEC11A	16OCT13		100																																				
2450-0057	Helium Transfer Lines	313*	20FEB12A	17MAY13	27MAR14	325	4	Helium Transfer Lines																																			
2450-0059	Nitrogen Transfer Lines	319*	23MAR12A	01JUL13	21JUL14	265	60	Nitrogen Transfer Lines																																			
2450-0085	Stack 8 Vacuum Lines	303*	16APR12A	01JUL13	15NOV13	295	3	Stack 8 Vacuum Lines																																			
2450-0056	Install Penetrations	102	15AUG12A	24AUG12A	24SEP12		100																																				
2450-0063	HVE Water Lines	65	26OCT12A	05AUG13	01MAY14	272	2	HVE Water Lines																																			
2450-0099	HVAC	99	20NOV12	09APR13	20JAN14	353	0	HVAC																																			
2450-0065	Ion Dump Water Lines	168	02MAY13	10JAN14	23JUN14	139	0	Ion Dump Water Lines																																			
2450-0067	Ion Source Water Lines	168	02MAY13	10JAN14	18APR14	139	0	Ion Source Water Lines																																			
2450-0093	Gas System	23	02MAY13	04JUN13	06NOV13	314	0	Gas System																																			
2450-0061	SF6 Transfer Lines	30	02JUL13	14AUG13	13MAR14	265	0	SF6 Transfer Lines																																			
2450-0074	Vacuum Lines	30	13JAN14	21FEB14	05AUG14	139	0	Vacuum Lines																																			
2450-0103	NBI SERVICES COMPLETE	0		21FEB14	05AUG14	139	0	▼ NBI SERVICES COMPLETE																																			
Title III																																											
2450-0053A	Engineering for 2nd NBI Services	561*	03JAN12A	02APR14	18AUG14	375	38	Engineering for 2nd NBI Services																																			
2450-0053B	Engineering Support for 2nd NBI Services (Vic)	561*	03JAN12A	02APR14	18AUG14	375	38	Engineering Support for 2nd NBI Services (Vic)																																			

Activity ID	Activity Description	Work Days	Forecast Start	Forecast Finish	BL FINISH	Total Float	% Comp	FY13												FY14												FY15														
								S	O	N	D	J	F	M	A	M	J	J	A	S	S	O	N	D	J	F	M	A	M	J	J	A	S	S	O	N	D	J	F	M	A	M	J	J	A	S
								Drafting Support for 2nd NBI Services																																						
2450-0053C	Drafting Support for 2nd NBI Services	539*	03JAN12A	03MAR14	18AUG14	148	40	Drafting Support for 2nd NBI Services																																						
Job: 2460 - 2nd NBI Armor-TRESEMER																																														
Final Design																																														
FY092460	FY09 Actual Cost	22*	23FEB09A	30SEP09A	30SEP09A		100																																							
FY102460	FY10 Actual Cost	143	01OCT09A	30APR10A	30APR10A		100																																							
2460-0018	PDR Prep - NBI Armor	36	03MAY10A	22JUN10A	22JUN10A		100																																							
FY102460A	FY10 Actual Cost	110	03MAY10A	30SEP10A	30SEP10A		100																																							
2460-0019	CONDUCT PDR - NBI Armor	1	23JUN10A	23JUN10A	23JUN10A		100																																							
2460-0020	Disposition PDR Chits - Final Design	23	28JUN10A	29JUL10A	29JUL10A		100																																							
2460-0021	Revise Armor Backing &Armor service connecti	19	28JUN10A	23JUL10A	23JUL10A		100																																							
2460-0016	Armor Service Connection (Bay H)	10	06JUL10A	19JUL10A	19JUL10A		100																																							
2460-0022	Design Drawings	186*	02AUG10A	08NOV10A	29APR11		100																																							
2460-0024	Armor Instrumentation/Service Connection	63*	18JAN11A	14APR11A	24FEB11		100																																							
2460-0027	Update Cost & Sched Estimate - Final Dsgn	89*	24JAN11A	26MAY11A	23MAY11		100																																							
2460-0026	Update Analysis	63*	21FEB11A	18MAY11A	13MAY11		100																																							
2460-0025	Develop Installation Techniques	20*	15MAR11A	11APR11A	24MAR11		100																																							
2460-0026A	Peer Review - 2nd NBI Armor	0		14APR11A			100																																							
2460-0028	100FDR Prep - NBI Armor	21*	19MAY11A	17JUN11A	13JUN11		100																																							
2460-0029	Conduct FDR - NBI Armor	3	20JUN11A	22JUN11A	14JUN11*		100																																							
2460-0030	FDR Chit Resolution	20	23JUN11A	24JUN11A	13JUL11*		100																																							
Procurement																																														
2460-0043	Prep Requisition & Procuremnt Pckg-Backing Plate	2	15AUG11A	26AUG11A	04SEP13		100																																							
2460-0044	Submit Request t/Proc - New Backing Plates	1	26AUG11A	26AUG11A	05SEP13		100																																							
2460-0037	Prep Requisition & Procuremnt Pckg - Armor suppo	36*	19SEP11A	07NOV11A	14MAR13		100																																							
2460-0045	Procurement Lead Time - New Backing Plates	21*	19SEP11A	17OCT11A	26SEP13		100																																							
2460-0031	Prep Requisition & Procuremnt Pckg - Armor Tiles	30*	25OCT11A	30NOV11A	15JAN13		100																																							
2460-0038	Submit Request t/Proc - Armor Support	1	07NOV11A	07NOV11A	15MAR13		100																																							
2460-0046	Award - New Backing Plates	1	07NOV11A	07NOV11A	27SEP13		100																																							
2460-0039	Procurement Lead Time - Armor Support	16	08NOV11A	30NOV11A	19APR13		100																																							
2460-0047	Delivery - New Backing Plates	51*	08NOV11A	27JAN12A	25OCT13		100																																							
2460-0032	Submit Request to Procurement - Armor Tiles	9*	28NOV11A	08DEC11A	16JAN13		100																																							
2460-0040	Award - Armor Support	1	30NOV11A	30NOV11A	22APR13		100																																							
2460-0041	Fabricate / Delivery - Armor Support	63	01DEC11A	16MAR12A	06JAN14		100																																							
2460-0033	Procurement Lead Times - Armor Tiles	39*	16JAN12A	22FEB12A	13MAR13		100																																							
2460-0034	Award - Armor Tiles	7*	23FEB12A	29FEB12A	14MAR13		100																																							
2460-0035	Fabricate / Delivery - Armor Tiles	193*	29FEB12A	30NOV12	27NOV13	317	50	Fabricate / Delivery - Armor Tiles																																						
Fabrication / Assembly																																														
2460-0054	Assembly Procedure Finalized	282*	17OCT11A	30NOV12	22JUL13	353	75	Assembly Procedure Finalized																																						

Activity ID	Activity Description	Work Days	Forecast Start	Forecast Finish	BL FINISH	Total Float	% Comp	FY13												FY14												FY15											
								S O N D J F M A M J J A S												S O N D J F M A M J J A S												S O N D J F M A M J J A S											
2460-0057	In Vessel Work Remove Armor	20	16FEB12A	22FEB12A	19AUG13		100																																				
2460-0049	Fabricate Backing Plates	200*	20FEB12A	30NOV12	15NOV13	157	75	Fabricate Backing Plates																																			
2460-0058	Armor Support Installation	8	19MAR12A	28MAR12A	14JAN14		100																																				
2460-XXXX	Modify BAY H Port Cover for TC Cooling	179*	23JUL12A	11APR13		230	75	Modify BAY H Port Cover for TC Cooling																																			
2460-0050	Assemble Armor Quad #1	7	12JUN13	20JUN13	26NOV13	157	0	Assemble Armor Quad #1																																			
2460-0051	Assemble Armor Quad #2	5	21JUN13	27JUN13	05DEC13	157	0	Assemble Armor Quad #2																																			
2460-0052	Assemble Armor Quad #3	5	28JUN13	08JUL13	12DEC13	157	0	Assemble Armor Quad #3																																			
2460-0053	Assemble Armor Quad #4	4	09JUL13	12JUL13	19DEC13	157	0	Assemble Armor Quad #4																																			
2460-0059	Armor Quadrant Installations	15	29JUL13	16AUG13	04FEB14	157	0	Armor Quadrant Installations																																			
2460-0060	Service Connections	4	19AUG13	22AUG13	10FEB14	157	0	Service Connections																																			
2460-0061	Bay-H Port Cover Install	3	23AUG13	27AUG13	13FEB14	157	0	Bay-H Port Cover Install																																			
2460-0062	PTP Testing - NBI Armor	2	28AUG13	29AUG13	17FEB14	157	0	PTP Testing - NBI Armor																																			
Job: 2470 - 2nd NBI Power-RAKI																																											
Relocate HVE																																											
Installation																																											
2425-0155A	Install HVE Hilti	0		15MAY13		147	0	Install HVE Hilti																																			
Relocate Beamline **TC LIMITED ACCESS**																																											
Installation																																											
2425-0112A	BEAMLINE AND COMPONENTS INSTALLED IN NTC	0		08JUL13		147	0	BEAMLINE AND COMPONENTS INSTALLED IN NTC																																			
21-AC Aux.																																											
Installation																																											
247000245	ip211-AC Auxiliaries PP's etc	130	03DEC12	12JUN13	14APR14	268	0	ip211-AC Auxiliaries PP's etc																																			
247000250	212 grounding	130	03DEC12	12JUN13	14APR14	268	0	212 grounding																																			
22-Reactivation																																											
Installation																																											
247000255	Switchyard- Reactivation	45	03DEC12	12FEB13	04SEP13	168	0	Switchyard- Reactivation																																			
247000256	Surge Room- Reactivation	50	13FEB13	23APR13	13NOV13	168	0	Surge Room- Reactivation																																			
247000257	Mod- reg- Reactivation	30	24APR13	05JUN13	08JAN14	168	0	Mod- reg- Reactivation																																			
247000258	Arc/Filament/magnet- Reactivation	30	06JUN13	19JUL13	19FEB14	168	0	Arc/Filament/magnet- Reactivation																																			

Activity ID	Activity Description	Work Days	Forecast Start	Forecast Finish	BL FINISH	Total Float	% Comp	FY13												FY14												FY15											
								S O N D J F M A M J J A S O N D J F M A M J J A S O N D J F M A M J J A S												S O N D J F M A M J J A S O N D J F M A M J J A S												S O N D J F M A M J J A S O N D J F M A M J J A S											
247000259	LCC- Reactivation	30	22JUL13	30AUG13	02APR14	168	0	LCC- Reactivation																																			
247000254	Power Testing of Reactivated Equipment	45	03SEP13	04NOV13	05JUN14	168	0	Power Testing of Reactivated Equipment																																			
24-Cabling																																											
Procurement																																											
247000470	Prep Req & Procurement Pckg - Cables	1	19DEC11A	20DEC11A	04FEB13		100	-																																			
247000490	Procurement Lead Time - Cables	30	19DEC11A	21DEC11A	19MAR13		100	-																																			
247000480	Submit Req to Procurement - Cables	1	20DEC11A	21DEC11A	05FEB13		100	-																																			
247000500	Award - Cables	106*	22DEC11A	25MAY12A	20MAR13		100	-																																			
2470-EAC	EAC Update Task(N/R per SL)	535*	09JAN12A	28SEP12A			100	EAC Update Task(N/R per SL)																																			
247000510	Procurement - NBI Power Cables	284*	13FEB12A	01APR13	10SEP13	179	90	Procurement - NBI Power Cables																																			
247000280	Prep Procurement Spec - Raceway	15	02NOV12	26NOV12	01FEB13	153	0	Prep Procurement Spec - Raceway																																			
247000520	Prep Req & Procurement Pckg - Raceway	1	15FEB13	15FEB13	05FEB13	153	0	Prep Req & Procurement Pckg - Raceway																																			
247000530	Submit Req to Procurement - Raceway	1	18FEB13	18FEB13	06FEB13	153	0	Submit Req to Procurement - Raceway																																			
247000540	Procurement Lead Time - Raceway	15	19FEB13	11MAR13	27FEB13	153	0	Procurement Lead Time - Raceway																																			
247000550	Award - Raceway	1	12MAR13	12MAR13	28FEB13	153	0	Award - Raceway																																			
247000560	Procurement/Fab/Assembly - Raceway	65	13MAR13	12JUN13	31MAY13	153	0	Procurement/Fab/Assembly - Raceway																																			
Installation																																											
247000275	Design - Cables	100	05DEC11A	16DEC11A	01FEB13		100	-																																			
247000270	Design Removal of Cable	128*	19MAR12A	31JUL12A	13JUL12		100	-																																			
247000710	Removal - Cable	103*	23JUL12A	17DEC12	11JAN13	282	90	Removal - Cable																																			
247000720	Installation Procedure - Cable	5	26OCT12A	19NOV12	18DEC12	285	50	Installation Procedure - Cable																																			
247000740	Installation Procedure - Raceway	5	26OCT12A	28NOV12	03JAN13	285	50	Installation Procedure - Raceway																																			
247000780	Commissioning - Removal of Cable	5	18DEC12	02JAN13	18JAN13	322	0	Commissioning - Removal of Cable																																			
247000750	Installation - 2nd NBI Raceway	90	13JUN13	21OCT13	17FEB14	153	0	Installation - 2nd NBI Raceway																																			
247000730	Installation - NBI PowerCable	45	09JUL13	10SEP13	11FEB14	147	0	Installation - NBI PowerCable																																			
Testing																																											
2470000729	decontmination of east wall	48	04JUN13	12AUG13	10SEP13	170	0	decontmination of east wall																																			
247000790	Commissioning - Cable	40	11SEP13	05NOV13	08APR14	147	0	Commissioning - Cable																																			
247000795	Commissioning - Raceway	5	22OCT13	28OCT13	24FEB14	153	0	Commissioning - Raceway																																			

Activity ID	Activity Description	Work Days	Forecast Start	Forecast Finish	BL FINISH	Total Float	% Comp	FY13												FY14												FY15											
								S O N D J F M A M J J A S												S O N D J F M A M J J A S												S O N D J F M A M J J A S											
								S	O	N	D	J	F	M	A	M	J	J	A	S	S	O	N	D	J	F	M	A	M	J	J	A	S	S	O	N	D	J	F	M	A	M	J
25-Transmission Line																																											
Fabrication / Assembly																																											
247000285	Design & Install Transmission Line	240	27NOV12*	12NOV13	19JUN14	202	0	[Bar]												Design & Install Transmission Line																							
28-System Design & Integration																																											
Final Design																																											
247000100	CDR Complete Power System	20	01OCT09A	28OCT09A	28OCT09A		100																																				
247000180	PDR Preparation	37	03MAY10A	23JUN10A	23JUN10A		100																																				
247000190	Conduct PDR	1	24JUN10A	24JUN10A	24JUN10A		100																																				
247000200	PDR Complete	0		24JUN10A	24JUN10A		100																																				
247000235	Calculations - Final Dsgn	115*	03JAN11A	13JUN11A	13JUN11		100																																				
247000295	FDR Cabling	115*	03JAN11A	13JUN11A	13JUN11		100																																				
2470PEER	Peer Review	0		14APR11A	31MAR11		100																																				
247000300	Conduct FDR	3	22JUN11A	24JUN11A	14JUN11		100																																				
247000305	FDR Complete	0		24JUN11A	14JUN11		100																																				
Title III																																											
247000090	Design dwgs, changes,as-builts (LOE)	973*	03MAY10A	31MAR14	30SEP14	377	64	[Bar]												Design dwgs, changes,as-builts (LOE)																							
System Testing																																											
Final Design																																											
FY092470	FY09 Actual Cost	22*	23FEB09A	30SEP09A	30SEP09A		100																																				
FY102470	FY10 Actual Cost	143	01OCT09A	30APR10A	30APR10A		100																																				
FY102470A	FY10 Actual Cost	110	03MAY10A	30SEP10A	30SEP10A		100																																				
Fabrication / Assembly																																											
247000890	New Procedures, PTP's, ISTEP's	44	05SEP13	05NOV13	08APR14	147	0	[Bar]												New Procedures, PTP's, ISTEP's																							
247000900	DC Hipots Engineering	20	06NOV13	05DEC13	06MAY14	147	0	[Bar]												DC Hipots Engineering																							
247000950	Control Sys Engr	20	06NOV13	05DEC13	06MAY14	147	0	[Bar]												Control Sys Engr																							
247000960	Coil Protection Engr	20	06NOV13	05DEC13	06MAY14	147	0	[Bar]												Coil Protection Engr																							
247000910	DC Hipots Commissioning	40	06DEC13	11FEB14	01AUG14	147	0	[Bar]												DC Hipots Commissioning																							
247000951	Control Sys Commissioning	40	06DEC13	11FEB14	02JUL14	147	0	[Bar]												Control Sys Commissioning																							
Testing																																											
247000920	Elect Interlock Testing Eng	20	06NOV13	05DEC13	06MAY14	147	0	[Bar]												Elect Interlock Testing Eng																							
247000940	Kirk Key Testing Eng	20	06NOV13	05DEC13	06MAY14	147	0	[Bar]												Kirk Key Testing Eng																							
247000945	Instrumentation Testing Engr	20	06NOV13	05DEC13	06MAY14	147	0	[Bar]												Instrumentation Testing Engr																							
247000930	Elect Interlock Testg Commissioning	40	06DEC13	11FEB14	02JUL14	147	0	[Bar]												Elect Interlock Testg Commissioning																							
247000941	Kirk Key Testg Commissioning	40	06DEC13	11FEB14	02JUL14	147	0	[Bar]												Kirk Key Testg Commissioning																							
247000946	Instrumentation Commissioning	40	06DEC13	11FEB14	02JUL14	147	0	[Bar]												Instrumentation Commissioning																							
247000971	Coil Protection Commissioning	40	06DEC13	11FEB14	02JUL14	147	0	[Bar]												Coil Protection Commissioning																							

Activity ID	Activity Description	Work Days	Forecast Start	Forecast Finish	BL FINISH	Total Float	% Comp	FY13 FY14 FY15																																			
								FY13												FY14												FY15											
								S	O	N	D	J	F	M	A	M	J	J	A	S	O	N	D	J	F	M	A	M	J	J	A	S	O	N	D	J	F	M	A	M	J	J	A
Penetration - Atnafu																																											
Design																																											
247000260	Design /DWGS/Site Investigation- Penetrations	29*	21MAY12A	28JUN12A	23JUL12		100																																				
Procurement																																											
247000420	Prep Req & Procurement Pckg - Penetrations	3	25JUN12A	28JUN12A	24JUL12		100																																				
247000430	Submit Req to Procurement - Penetrations	1	28JUN12A	28JUN12A	25JUL12		100																																				
247000440	Procurement Lead Time - Penetrations	6	09JUL12A	16JUL12A	29AUG12		100																																				
247000450	Award - Penetrations	24*	17JUL12A	17AUG12A	30AUG12		100																																				
247000460	Procurement/Fab/Assembly - Penetrations	10	13AUG12A	16AUG12A	04DEC12		100																																				
Installation																																											
247000690	Installation Procedure - Penetrations	68*	14MAY12A	17AUG12A	11DEC12		100																																				
247000700	Installation - Penetrations	49	15AUG12A	24AUG12A	21DEC12		100																																				
Relocate Sources																																											
Installation																																											
2425-0120A	Align 3 - Source Movement	0		12JUL13		288	0	▼ Align 3 - Source Movement																																			
Job: 2475 - 2nd NBI Controls-CROPPER																																											
Control System Layout																																											
Final Design																																											
2475-0002	Control System Lay Out-NBI-Controls & Instrument	30	03MAY10A	14JUN10A	14JUN10A		100																																				
2475-0005	Design Drawings-NBI-Controls & Instrumentation	30	03MAY10A	14JUN10A	14JUN10A		100																																				
2475-0003	Update Cost & Sched Estimate-NBI-Control & Instrm	5	08JUN10A	14JUN10A	14JUN10A		100																																				
2475-0004	FMEA Analysis-NBI-Controls & Instrumentation	5	08JUN10A	14JUN10A	14JUN10A		100																																				
2475-0006	PDR Prep PPL-NBI-Controls & Instrumentation	6	15JUN10A	22JUN10A	22JUN10A		100																																				
2475-0009	CONDUCT PDR-NBI-Controls & Instrumentation	1	23JUN10A	23JUN10A	23JUN10A		100																																				
2475-0012	Disposition PDR Chits-NBI-Controls & Instrum	10	23JUN10A	28JUN10A	28JUN10A		100																																				
2475-0102	PLC Control System Layout-Prep Dwgs & Signoff	296*	28JUL10A	30SEP11A	28FEB11		100																																				
2475-0106	DWGS CWD's & Cable Diagram-Prep Dwgs & Signoff	250*	01OCT10A	30SEP11A	20MAY11		100																																				
2475-0103	Remote LCC Control Sys Layout-Prep Dwgs & Signoff	209*	01DEC10A	31MAY11A	14MAR11		100																																				
2475-0018	Protective Plate Interlocks-Prep Dwgs & Signoff	192*	03JAN11A	30SEP11A	31MAR11		100																																				
2475-0104	TC scanners/Beamline/P.P-Prep Dwgs & Signoff	192*	03JAN11A	30JUN11A	04APR11		100																																				
2475-0105	NBOS Station - Control System Layout	42	11JAN13	11MAR13	18APR11	164	0	■ NBOS Station - Control System Layout																																			
Final Design																																											
Final Design																																											
FY102475A	FY10 Actual Cost	110	03MAY10A	30SEP10A	30SEP10A		100																																				
2475-0110	Design Drawings-NBI-Controls & Instrumentation	565*	29JUN10A	23AUG12A	20MAY11		100																																				
2475PEER	Peer Review	0		14APR11A	31MAR11		100																																				
2475-0110A	Update Cost & SchedEstimate-NBI-Controls & Instr	10*	23MAY11A	06JUN11A	27MAY11		100																																				
2475-0110B	FDR Prep PPL-NBI-Controls & Instrumentation	10*	07JUN11A	20JUN11A	13JUN11		100																																				
2475-0111	CONDUCT FDR-NBI-Controls & Instrumentation	3	22JUN11A	24JUN11A	14JUN11		100																																				

Activity ID	Activity Description	Work Days	Forecast Start	Forecast Finish	BL FINISH	Total Float	% Comp	FY13 FY14 FY15																																		
								FY13												FY14												FY15										
								S	O	N	D	J	F	M	A	M	J	J	A	S	S	O	N	D	J	F	M	A	M	J	J	A	S	S	O	N	D	J	F	M	A	M
Procurement																																										
Procurement																																										
2475-0116	Prep Requisition and procurement package	172*	19SEP11A	24MAY12A	09JUL12		100																																			
2475-0117	SUBMIT REQ TO PROCUREMENT	167*	26SEP11A	24MAY12A	10JUL12		100																																			
2475-0118	Procurement lead time (1)	167*	26SEP11A	24MAY12A	31JUL12		100																																			
2475-0119	AWARD-NBI-Controls & Instrumentation	167*	26SEP11A	24MAY12A	01AUG12		100																																			
2475-0120	Fabricate or delivery--NBI-Controls & Instrument	191*	26SEP11A	14JUN12A	27SEP12		100																																			
Fab/Assembly																																										
Fabrication / Assembly																																										
2475-0123	Fab/Assy Procedure	5	01DEC11A	19DEC11A	27SEP12		100																																			
2475-0127	Control Rack Cage - Fab/Assembly	5	01DEC11A	20DEC11A	09JAN13		100																																			
2475-0126	Gradient Grid divider - Fab/Assembly	74*	20FEB12A	31MAY12A	02JAN13		100																																			
2475-0129	Penetrations - Fab/Assembly	25	17MAY12A	31MAY12A	20FEB13		100																																			
2475-0125	Cable Tray - Fab/Assembly	150*	21MAY12A	21DEC12	26NOV12	213	40	Cable Tray - Fab/Assembly																																		
Installation																																										
2475-0128	Rack relocation - Fab/Assembly	264*	17OCT11A	02NOV12	13FEB13	170	90	Rack relocation - Fab/Assembly																																		
2475-0130	Disconnect remote control	171*	24OCT11A	30APR12A	20MAR13		100																																			
Installation																																										
Fabrication / Assembly																																										
2475-0133	Installation Procedures	164*	20FEB12A	23AUG12A	20MAR13		100																																			
Installation																																										
2475-0139	LCC Remote - Installation	279*	26SEP11A	02NOV12	28JAN14	249	95	LCC Remote - Installation																																		
2475-0137	TC Scanners - beamline & Protective Plates-Instl	332*	10DEC11A	12APR13	05NOV13	210	25	TC Scanners - beamline & Protective Plates-Instl																																		
2475-0140	Power Supply Upgrade - Installation	394*	16JAN12A	26OCT12A	28FEB14		100	Power Supply Upgrade - Installation																																		
2475-0135	Aux Cabling - Installation	318*	16APR12A	24JUL13	12AUG13	170	10	Aux Cabling - Installation																																		
2475-0141	Protective Plate TC's - Installation	10	05NOV12	16NOV12	14MAR14	326	0	Protective Plate TC's - Installation																																		
2475-0134	Beam Line Cabling - Installation	80	12MAR13	02JUL13	15JUL13	164	0	Beam Line Cabling - Installation																																		
2475-0136	Protective Plate Interlocks(I/P Pyrometer/IR Cam	20	03JUL13	01AUG13	10SEP13	164	0	Protective Plate Interlocks(I/P Pyrometer/IR Cam																																		
2475-0138	NBOS Station - Installation	10	02AUG13	15AUG13	19NOV13	164	0	NBOS Station - Installation																																		
Programing																																										
Final Design																																										
2475-0147	LCC Remote LabView Programing-NBI-Controls/Instr	137*	18JUN12A	20SEP12A	25MAR14		100	LCC Remote LabView Programing-NBI-Controls/Instr																																		
2475-0145	Beamline TC Scanner Program-NBI-Controls & Instr	20	15APR13	10MAY13	05DEC13	210	0	Beamline TC Scanner Program-NBI-Controls & Instr																																		
2475-0146	Protective Plate TC Scanner Program-NBI-Controls	20	13MAY13	10JUN13	11APR14	210	0	Protective Plate TC Scanner Program-NBI-Controls																																		
Installation																																										
2475-0144	PLC & RSView Programing-NBI-Controls & Instrumen	36*	31OCT12	21DEC12	27NOV13	323	0	PLC & RSView Programing-NBI-Controls & Instrumen																																		

Activity ID	Activity Description	Work Days	Forecast Start	Forecast Finish	BL FINISH	Total Float	% Comp	FY13 FY14 FY15																																		
								FY13												FY14												FY15										
								S	O	N	D	J	F	M	A	M	J	J	A	S	S	O	N	D	J	F	M	A	M	J	J	A	S	S	O	N	D	J	F	M	A	M
Testing																																										
Installation																																										
2475-0149	PTP Testing	20	16AUG13	13SEP13	09MAY14	164	0	■ PTP Testing																																		
Commissioning in Ops																																										
Installation																																										
2475-0167A	EPICS CI&C Wave Form Data	107*	02APR12A	28JUN12A	25MAY12		100																																			
2475-0167B	EPICS CI&C MDS	93*	02APR12A	31JUL12A	13APR12		100																																			
2475-0167C	EPICS Displays	67*	21SEP12A	04JAN13	21JUN12	130	80	■ EPICS Displays																																		
2475-0167D	EPICS CI&C Peer Review	5	31OCT12	06NOV12	18JUN12	284	0	■ EPICS CI&C Peer Review																																		
2475-0167E	EPICS CI&C Timing	50	25JUN13	05SEP13	10JUN13	130	0	■ EPICS CI&C Timing																																		
2475-0154	Commissioning & Testing of 4A Power System	20	16SEP13	11OCT13	09JUN14	164	0	■ Commissioning & Testing of 4A Power System																																		
2475-0155	Commissioning & Testing of 4B Power System	20	14OCT13	08NOV13	08JUL14	164	0	■ Commissioning & Testing of 4B Power System																																		
2475-0156	Commissioning & Testing of 4C Power System	20	11NOV13	10DEC13	05AUG14	164	0	■ Commissioning & Testing of 4C Power System																																		
2475-0157	40 kv Beam Operation	20	11DEC13	17JAN14	03SEP14	164	0	■ 40 kv Beam Operation																																		
2475-0167F	EPICS CI&C Protective Plate Thermocouple Changes	20	07FEB14	06MAR14	29JAN14	130	0	■ EPICS CI&C Protective Plate Thermocouple Changes																																		
2475-0167G	EPICS CI&C Testing	10	10FEB14	21FEB14	16JAN14	139	0	■ EPICS CI&C Testing																																		
Installation																																										
2475-0170A	LCC Refurbishment	60	01NOV12*	05FEB13	05FEB13	398	0	■ LCC Refurbishment																																		
2475-0170C	Software Upgrade (Windows 7 compatible)	20	03DEC12*	08JAN13	08JAN13	418	0	■ Software Upgrade (Windows 7 compatible)																																		
2475-0170B	Restore Low Voltage Supplies	20	02JAN13*	29JAN13	29JAN13	403	0	■ Restore Low Voltage Supplies																																		
2475-0170D	Update Display Software (Windows 7 compatible)	40	01APR13*	24MAY13	24MAY13	320	0	■ Update Display Software (Windows 7 compatible)																																		
Job: 2480 - 2nd NBI/TVPS Duct & VV-BLANCHARD																																										
Design																																										
Final Design																																										
FY092480	FY09 Actual Cost	22*	23FEB09A	30SEP09A	30SEP09A		100																																			
FY102480	FY10 Actual Cost	143	01OCT09A	30APR10A	30APR10A		100																																			
2480-0024	New Coil Comonents F/J-K RWM Coil Re Dsgn	22	03MAY10A	02JUN10A	02JUN10A		100																																			
2480-0025	Seismic Analysis	5	03MAY10A	07MAY10A	07MAY10A		100																																			
2480-0027	PDR Prep - Duct & VV Mods	36	03MAY10A	22JUN10A	22JUN10A		100																																			
FY102480A	FY10 Actual Cost	110	03MAY10A	30SEP10A	30SEP10A		100																																			
2480-0029	Disposition PDR Chits - Final Design	84*	03JUN10A	30SEP10A	30SEP10A		100																																			
2480-0028	CONDUCT PDR - Duct & VV Mods	1	23JUN10A	23JUN10A	23JUN10A		100																																			
2480-0030	J-K Cap/Installation Procedure	342	16AUG10A	30NOV11A	28FEB11		100																																			
2480-0031	K- Port Extension	41*	16AUG10A	30SEP10A	30SEP10A		100																																			
2480-0032	NB- Ceramic-Break	47*	16AUG10A	30SEP10A	30SEP10A		100																																			

Activity ID	Activity Description	Work Days	Forecast Start	Forecast Finish	BL FINISH	Total Float	% Comp	FY13												FY14												FY15														
								S	O	N	D	J	F	M	A	M	J	J	A	S	S	O	N	D	J	F	M	A	M	J	J	A	S	S	O	N	D	J	F	M	A	M	J	J	A	S
2485-0050A	Install Vacuum Instrumentation	10	17JUN13	28JUN13	13AUG14	286	0	Install Vacuum Instrumentation																																						
Testing																																														
2485-0048	Leak Checking	3	17JUN13	19JUN13	04AUG14	293	0	Leak Checking																																						
2485-0051	PTP Testing	10	01JUL13	16JUL13	27AUG14	286	0	PTP Testing																																						
Job: 2490 - NTC Equipt Relocations-PERRY																																														
Final Design																																														
FY092490	FY09 Actual Cost	22*	23FEB09A	30SEP09A	30SEP09A		100																																							
FY102490	FY10 Actual Cost	143	01OCT09A	30APR10A	30APR10A		100																																							
FY102490A	FY10 Actual Cost	45	01JUN10A	30JUL10A	30JUL10A		100																																							
24910000A	Design Construction Power Cart	10	11JUL11A	18JUL11A			100																																							
24910000B	Purchase Material for Power Cart	20	18JUL11A	23SEP11A			100																																							
24910000C	Fabricate Power Cart	5	19SEP11A	23SEP11A			100																																							
24910000D	Field Power Shutdown	1	17OCT11A	17OCT11A	17OCT11A		100																																							
Removal Procedures																																														
Fabrication / Assembly																																														
24910010	Prep procd rack 419 removal - UCLA Reflectometer	171	14MAR11A	10NOV11A	05OCT11		100																																							
24910260	Prep procedure rack 447-448 removal-Fiber Optics	158	14MAR11A	24OCT11A	18OCT11		100																																							
24910310	Prep procedure rack 449 removal - Glow Discharge	176	14MAR11A	17NOV11A	21OCT11		100																																							
24910360	Prep procd rack 456 removal-Xray Crystal Spectr	120*	14MAR11A	30AUG11A	26OCT11		100																																							
24910380	Prp procd rack 488 remv-Dep monitr/fast xray/NPA	142*	14MAR11A	11JUL11A	31OCT11		100																																							
24910430	Prep procedure rack 489 removal - NPA	142*	14MAR11A	11JUL11A	03NOV11		100																																							
24910450	Prep procedure rack removal - PSI Camera	132*	14MAR11A	23SEP11A	08NOV11		100																																							
24910500	Prp procd rack removal -Ultra Fast X-ray Camera	142*	14MAR11A	29JUL11A	11NOV11		100																																							
24910550	Prep procd rack removal-Transmsn Grating Spectro	143*	14MAR11A	23SEP11A	16NOV11		100																																							
24910700	Prp procd equipt removal Bay J-Two gas injectors	153	14MAR11A	17OCT11A	17NOV11		100																																							
24910750	Prep procd equipment removal Bay J - Reflectomer	153	14MAR11A	17OCT11A	18NOV11		100																																							
24910800	Prep procdur equipment removal Bay J - Bolometer	153	14MAR11A	17OCT11A	21NOV11		100																																							
24910850	Prep procdur equipment removal Bay J - RF Prove	153	14MAR11A	17OCT11A	22NOV11		100																																							
24910900	Prep procedure equipment removal Bay J - S-Flip	153	14MAR11A	17OCT11A	23NOV11		100																																							
24910950	Prep procedure equipment removal Bay J - SSNPA	153	14MAR11A	17OCT11A	28NOV11		100																																							
24911000	Prp procd equipt removal Bay J-Re-entrant Window	176	14MAR11A	17NOV11A	29NOV11		100																																							
24911050	Prp procd equipt removal Bay K-High K Scattering	147	14MAR11A	07OCT11A	06DEC11		100																																							
24911070	Prep procdur equipment removal Bay K - FireTips	147	14MAR11A	07OCT11A	13DEC11		100																																							
24911090	Prep procdur equipment removal Bay K - PSI Camera	153	14MAR11A	17OCT11A	16DEC11		100																																							
24911110	Prp procedure equipment removal Bay K - NPA	143*	14MAR11A	23SEP11A	23DEC11		100																																							
24911130	Prp procd equipt remov Bay K-Ultra Fast Xray Cam	143*	14MAR11A	23SEP11A	03JAN12		100																																							
24911150	Prp procd equipt removal Bay K-IR Window f/Camra	176	14MAR11A	17NOV11A	04JAN12		100																																							
24911200	Prp procd equip removal Bay K-Trans Grating Spec	168	14MAR11A	07NOV11A	05JAN12		100																																							
24911250	Prep procd EQ remval Bay L pmp duct-VV Ion Gages	176*	14MAR11A	29NOV11A	09JAN12		100																																							

Activity ID	Activity Description	Work Days	Forecast Start	Forecast Finish	BL FINISH	Total Float	% Comp	Gantt Chart																																		
								FY13												FY14												FY15										
								S	O	N	D	J	F	M	A	M	J	J	A	S	S	O	N	D	J	F	M	A	M	J	J	A	S	S	O	N	D	J	F	M	A	M
Job: 3300 - Bakeout System Mods for CSU-RAKI																																										
Final Design																																										
3300-105	Bakeout- Prelim Design	37	03MAY10A	23JUN10A	23JUN10A		100																																			
3300-110	Bakeout-PDR	0		23JUN10A	23JUN10A		100																																			
3300-115	Bakeout-Final Design	33*	02MAY11A	16JUN11A	09MAY11		100																																			
3300-117	Bakeout-Peer Review	0		18MAY11A	01OCT10		100																																			
3300-120	Bakeout-FDR	0		22JUN11A	15JUN11*		100																																			
Procurement																																										
3300-125	Bakeout-Procure Hardware (PEO11454)	59*	12DEC11A	29FEB12A	14APR14		100																																			
Fabrication / Assembly																																										
3300-130	Bakeout-Assembly	65	21JAN13	19APR13	16JUL14	320	0	Bakeout-Assembly																																		
Installation																																										
3300-135	Bakeout-Installation	20	22APR13	17MAY13	13AUG14	320	0	Bakeout-Installation																																		
3300-140	Bakeout-Test	5	20MAY13	24MAY13	20AUG14	320	0	Bakeout-Test																																		
Job: 3400 - Gas Delivery System Mods-BLANCHARD																																										
Final Design																																										
FY103400	FY10 Actual Cost	17	01DEC09A	23DEC09A	23DEC09A		100																																			
FY103400A	FY10 Actual Cost	130	01APR10A	30SEP10A	30SEP10A		100																																			
3400-0016	Update Cost & Schedule Estimate - Gas Delivery S	2	03MAY10A	04MAY10A	04MAY10A		100																																			
3400-0017	Design Drawings - Gas Delivery Sys Mod	3	05MAY10A	07MAY10A	07MAY10A		100																																			
3400-0018	PDR Prep - Gas Delivery Sys Mod	9	10JUN10A	22JUN10A	22JUN10A		100																																			
3400-0019	CONDUCT PDR - Gas Delivery Sys Mod	1	23JUN10A	23JUN10A	23JUN10A		100																																			
3400-0022	Disposition PDR Chits - Gas Delivery Sys Mod	2	23JUN10A	24JUN10A	24JUN10A		100																																			
3400-0023	Design Drawings - Gas Delivery Sys Mod	428*	02MAY11A	21JAN13	28MAR11	381	80	Design Drawings - Gas Delivery Sys Mod																																		
3400-0025	Update Cost & Schedule Estimate - Gas Delivery S	24*	16MAY11A	17JUN11A	04APR11		100																																			
3400-0027A	Gas Delivery System - Peer review	0		18MAY11A	01OCT10		100																																			
3400-0027	FDR Prep - Gas Delivery Sys Mod	15	20MAY11A	27MAY11A	16MAY11		100																																			
3400-0028	CONDUCT FDR	3	22JUN11A	24JUN11A	17MAY11		100																																			
Fabrication / Assembly																																										
3400-0046	Shop Fabrication - Gas Delivery Sys Mod	1	01OCT13*	01OCT13	01OCT13	205	0	Shop Fabrication - Gas Delivery Sys Mod																																		
3400-0047	Assembly - Gas Delivery Sys Mod	1	02OCT13	02OCT13	02OCT13	205	0	Assembly - Gas Delivery Sys Mod																																		
Installation																																										
3400-0050	Installation Procedure/Oversight - Gas Delivery	6	03OCT13	10OCT13	10OCT13	205	0	Installation Procedure/Oversight - Gas Delivery																																		
3400-0051	Machine Installation - Gas Delivery Sys Mod	13	11OCT13	29OCT13	29OCT13	205	0	Machine Installation - Gas Delivery Sys Mod																																		
Testing																																										
3400-0052	PTP Testing/Programming - Gas Delivery Sys Mod	7	30OCT13	07NOV13	07NOV13	205	0	PTP Testing/Programming - Gas Delivery Sys Mod																																		

Activity ID	Activity Description	Work Days	Forecast Start	Forecast Finish	BL FINISH	Total Float	% Comp	FY13												FY14												FY15														
								S	O	N	D	J	F	M	A	M	J	J	A	S	S	O	N	D	J	F	M	A	M	J	J	A	S	S	O	N	D	J	F	M	A	M	J	J	A	S
4100-0050	Installation Procedure (ex-vessel only)	21	11FEB13*	11MAR13	19OCT12	158	0													Installation Procedure (ex-vessel only)																										
4100-0047	Assembly	65	07MAR13	06JUN13	20JUN13	131	0													Assembly																										
4100-0056	Mount Diagnostics in PFC Tiles	40	11APR13	06JUN13	20JUN13	136	0													Mount Diagnostics in PFC Tiles																										
4100-0051	Machine Installation (ex-vessel only)	30	07JUN13	22JUL13	05AUG13	131	0													Machine Installation (ex-vessel only)																										
Testing																																														
4100-0052	PTP Testing	15	23JUL13	12AUG13	26AUG13	131	0													PTP Testing																										
Job: 4500 - MPTS VV Modification-LABIK																																														
Design																																														
Final Design																																														
FY104500A	FY10 Actuals Cost	110	03MAY10A	30SEP10A	30SEP10A		100																																							
MPTS-0009	Stress Analysis - Bay L	397*	11AUG10A	29FEB12A	14JAN11		100																																							
MPTS-0004	Prep System Description	355*	16AUG10A	02DEC11A	25JAN11		100																																							
MPTS-0011	Conceptual Design presented at PDR	7	23AUG10A	31AUG10A	31AUG10A		100																																							
MPTS-0010	N/A Technical Support (see 0021)	49	01SEP10A	01SEP10A	01SEP10A		100																																							
MPTS-0011A	Conceptual Design Chits	20	01SEP10A	29SEP10A	29SEP10A		100																																							
MPTS-0025	100Design Pro E Model - (Bay L)	373	15SEP10A	23MAR12A	29JUL11		100																																							
MPTS-0025A	Design Pro E Model - (Bay F)	502*	15SEP10A	17SEP12A	29JUL11		100	Design Pro E Model - (Bay F)																																						
MPTS-0007	Mechanical Design Bay L	361*	01OCT10A	15MAR12A	17JAN11		100																																							
MPTS-0021	Technical Support General (LOE)	556*	01OCT10A	20DEC12	30SEP11	688	99	Technical Support General (LOE)																																						
MPTS-0003	PREPARE WORK PLANNING FORM	49*	11OCT10A	20DEC10A	12OCT10		100																																							
MPTS-0014	Mechanical Design Bay F	331	01DEC10A	23MAR12A	30JUN11		100																																							
MPTS-0026	Update Optic & Stress Analyses	251*	15DEC10A	02DEC11A	29JUL11		100																																							
MPTS-0009A	Stress Analysis - Bay F	204*	23DEC10A	17OCT11A	21FEB11		100																																							
MPTS-0015	Port Support Design Bay F	384*	07JAN11A	16JUL12A	16AUG11		100																																							
MPTS-0008	Port Support Design Bay L	480*	24JAN11A	17DEC12	10FEB11	207	99	Port Support Design Bay L																																						
MPTS-0020	CONDUCT PDR for MPTS	1	09MAY11A	09MAY11A	10FEB11		100																																							
MPTS-0020A	Input for Global FDR	23*	18MAY11A	20JUN11A	15MAR11		100																																							
MPTS-0023A	Center Stack - Peer Review	0		18MAY11A			100																																							
MPTS-0023	Disposition PDR Chits	115	01JUN11A	10NOV11A	01JUN11		100																																							

Activity ID	Activity Description	Work Days	Forecast Start	Forecast Finish	BL FINISH	Total Float	% Comp	FY13												FY14												FY15														
								S	O	N	D	J	F	M	A	M	J	J	A	S	S	O	N	D	J	F	M	A	M	J	J	A	S	S	O	N	D	J	F	M	A	M	J	J	A	S
MPTS-0028	Final Design Changes	359*	01JUN11A	30OCT12A	06OCT11		100	Final Design Changes																																						
MPTS-0029	Detail Drawings	339*	20JUN11A	31OCT12A	29SEP11		100	Detail Drawings																																						
MPTS-0027	Update Cost & Schedule Estimate	43*	03OCT11A	02DEC11A	10JUN11		100																																							
MPTS-0028A	CONDUCT FDR MPTS VV interface	29	21OCT11A	02DEC11A	12SEP11		100																																							
MPTS-0028C	CONDUCT FDR externals	230*	05DEC11A	31OCT12A	23SEP11		100	CONDUCT FDR externals																																						
MPTS-0030	FDR Chit Response	178*	23FEB12A	31OCT12A	19SEP11		100	FDR Chit Response																																						
Procurement																																														
Procurement																																														
MPTS-0033	Bay L Port Cover (CAP) Diagnostic Components	348*	15AUG11A	10JAN13	11APR12	207	90	Bay L Port Cover (CAP) Diagnostic Components																																						
MPTS-0036	Tooling	426*	15AUG11A	30APR13	11APR12	207	80	Tooling																																						
MPTS-0035	Misc Materials	297*	23FEB12A	30APR13	11APR12	207	95	Misc Materials																																						
Fabrication / Assembly																																														
MPTS-0032	Bay L CAP & Bay F/G Plug - Fabrication	271*	05DEC11A	10JAN13	11APR12	207	66	Bay L CAP & Bay F/G Plug - Fabrication																																						
Fabrication																																														
Fabrication / Assembly																																														
MPTS-0039	POP Vessel Wall Plate and Nozzle Mockup	42	01JUN11A	30JUN11A	30JUN11		100																																							
MPTS-0038	Fabricate Tooling & New Port Support Assemblies	130*	18JUN12A	20DEC12	17APR12	207	65	Fabricate Tooling & New Port Support Assemblies																																						
MPTS-0041	Low Power Laser Holder for Bay L , F and F/G	101*	20AUG12A	21JAN13	08MAY12	216	35	Low Power Laser Holder for Bay L , F and F/G																																						
Installation																																														
Installation																																														
MPTS-0044	Installation Procedure (4)	134*	03JUL12A	21JAN13	11JUL12	207	25	Installation Procedure (4)																																						
MPTS-0045	SetUp Cutting Device Supp/Machine Penetr - L/F/G	143*	03JUL12A	01FEB13	06SEP12	207	35	SetUp Cutting Device Supp/Machine Penetr - L/F/G																																						
MPTS-0043A	Protective Enclosure Cutting Debris	110*	20AUG12A	01FEB13	16FEB12	207	60	Protective Enclosure Cutting Debris																																						
MPTS-0046	Set Up New Ports Support Bays L&F	53*	26OCT12A	21JAN13	02OCT12	207	10	Set Up New Ports Support Bays L&F																																						
MPTS-0050	Metrology Support & leak check ports	86*	26OCT12A	07MAR13	15NOV13	330	25	Metrology Support & leak check ports																																						
MPTS-0047	Instl Bay L Cap (Weld New Ports) & Bay F/G Plug	33	22JAN13	07MAR13	02NOV12	207	0	Instl Bay L Cap (Weld New Ports) & Bay F/G Plug																																						
MPTS-0048	Set up and Machine Bay F Edge	13	08MAR13	26MAR13	10MAY13	207	0	Set up and Machine Bay F Edge																																						
Job: 5000 - CSU Power Systems-RAKI																																														
51 - AC Power																																														
Final Design																																														
510-003	51- AC Power -FINAL DESIGN PREP	136	01DEC10A	17JUN11A	28MAR11		100																																							
Procurement																																														
510-005	51- AC Power -procedures, specs, revision	68*	24SEP12A	08JAN13	30JUL13	193	8	51- AC Power -procedures, specs, revision																																						
510-EAC	EAC Update Task (N/R per SL)	368*	28SEP12A	28SEP12A			100	EAC Update Task (N/R per SL)																																						
510-009	51- AC Power -Procurement	65	09JAN13	09APR13	30OCT13	193	0	51- AC Power -Procurement																																						

Activity ID	Activity Description	Work Days	Forecast Start	Forecast Finish	BL FINISH	Total Float	% Comp	FY13												FY14												FY15														
								S	O	N	D	J	F	M	A	M	J	J	A	S	S	O	N	D	J	F	M	A	M	J	J	A	S	S	O	N	D	J	F	M	A	M	J	J	A	S
Installation																																														
510-013	51- AC Power -Installation	20	10APR13	07MAY13	27NOV13	193	0	51- AC Power -Installation																																						
510-017	51- AC Power -Test&Commission	20	08MAY13	05JUN13	08JAN14	193	0	51- AC Power -Test&Commission																																						
52 - AC/DC Converters																																														
Procurement																																														
520-009	52 - AC/DC Converters -Procurement	65	26FEB13	28MAY13	09OCT13	139	0	52 - AC/DC Converters -Procurement																																						
Fabrication / Assembly																																														
520-005	52 - AC/DC Converters - Dsn	54	03DEC12	25FEB13	09JUL13	139	0	52 - AC/DC Converters - Dsn																																						
Installation																																														
520-013	52 - AC/DC Converters -Reactivate	40	29MAY13	25JUL13	06DEC13	139	0	52 - AC/DC Converters -Reactivate																																						
520-017	52 - AC/DC Converters -Test&Commission	20	26JUL13	22AUG13	15JAN14	139	0	52 - AC/DC Converters -Test&Commission																																						
531 - FCPC DC PF1 & TF Systems																																														
Final Design																																														
531-004	531- FCPC DC Systems FINAL DESIGN PREP	136*	01DEC10A	17JUN11A	23JUN11		100																																							
Procurement																																														
531-005A	531.2 - FCPC DC Systems Prep Specs Power Cables	40*	01DEC11A	16DEC11A	02FEB12		100																																							
531-005	N/A 531.2 - FCPC DC Sys procedures, specs, rev	218	12DEC11A	22DEC11A	22DEC11A		100																																							
531-005B	531.2 - FCPC DC Systems procedures, specs, rev	255*	12DEC11A	17DEC12	22JUN12	180	75	531.2 - FCPC DC Systems procedures, specs, rev																																						
531-013	531.2-FCPC DC Sys-Proc 1000MCM Cable (20Dec)	327*	20DEC11A	31JUL12A	27MAR13		100																																							
531-020A	531.1- Test PLT Toroidal Field coils	0		10FEB12A			100																																							
531-021A	531.1- Clear FCPC	25*	23APR12A	25MAY12A	01OCT10		100																																							
531-021	531.1- FCPC DC Systems -Procure OH Reactors	73	15OCT13*	06FEB14	06AUG13	150	0	531.1- FCPC DC Systems -Procure OH Reactors																																						
Fabrication / Assembly																																														
531-017	531.2 - FCPC DC Sys Cabling Changes (REM/INSTL)	361*	01MAR12A	08AUG13	17JAN14	249	65	531.2 - FCPC DC Sys Cabling Changes (REM/INSTL)																																						
Installation																																														
531-500	531- 5 Transition Area Cabling - Design	20	07JUL11A	29JUL11A			100																																							
531-510	531- 5 Transition Area Cabling - Iss Subcontrac	169*	28JUL11A	19DEC11A			100																																							
531-520	531- 5 Transition Area Cabling -Instl/Test/Comm	34*	19JAN12A	29FEB12A			100																																							
531-029	531.2 - FCPC DC Systems-Install cable & misc h/w	400*	12APR12A	14NOV13	03FEB14	180	20	531.2 - FCPC DC Systems-Install cable & misc h/w																																						
531-025	100531.1- FCPC DC Systems -OH React Install	45*	20AUG12A	26OCT12A	17JAN14		100	100531.1- FCPC DC Systems -OH React Install																																						
531-033	531.2 - FCPC DC Systems -Test&Commission	20	15NOV13	16DEC13	03MAR14	180	0	531.2 - FCPC DC Systems -Test&Commission																																						
532 - TA-NTC DC Systems																																														
Final Design																																														
532-003	532- PCTS Changes -FINAL DESIGN PREP	136*	01DEC10A	17JUN11A	26APR11		100																																							
Procurement																																														
532-005	532- PCTS Changes -procedures, specs, revision	150*	05JUL11A	16DEC11A	11FEB13		100																																							
532-009	532- PCTS Changes -Procurement	8*	19DEC11A	21DEC11A	29AUG13		100																																							

Activity ID	Activity Description	Work Days	Forecast Start	Forecast Finish	BL FINISH	Total Float	% Comp	FY13												FY14												FY15														
								S	O	N	D	J	F	M	A	M	J	J	A	S	S	O	N	D	J	F	M	A	M	J	J	A	S	S	O	N	D	J	F	M	A	M	J	J	A	S
Testing																																														
552-003	552 - System Testing -Testing	65	31OCT13	12FEB14	03JUN14	91	0	H 552 - System Testing -Testing																																						
Title III																																														
551-001	551 - Sys Dsgn -design support, analysis (LOE)	969*	03MAY10A	25MAR14	25SEP14	381	65	H 551 - Sys Dsgn -design support, analysis (LOE)																																						
551-001A	551 - FDR Transition Area	119*	03JAN11A	17JUN11A	28FEB11		100																																							
Final Design																																														
FY095000	FY09 Actual Cost	22*	23FEB09A	30SEP09A	30SEP09A		100																																							
FY105000	FY10 Actual Cost	143	01OCT09A	30APR10A	30APR10A		100																																							
FY105000A	FY10 Actual Cost	130	01APR10A	30SEP10A	30SEP10A		100																																							
Job: 5200 - Digital Coil Protection-HATCHER																																														
Software Requirement Document																																														
Team																																														
5200-0040	Distribute draft and solicit comment	30*	22JUN12A	31JUL12A	18JUN12		100																																							
Hatcher																																														
04	Project Oversight	846*	01NOV10A	31MAR14	31MAR14	113	59	H Project Oversight																																						
5200-0020	Strategy meeting	141*	16APR12A	01NOV12	17MAY12	92	90	H Strategy meeting																																						
5200-0030	Prepare first draft	33*	23APR12A	07JUN12A	07JUN12		100																																							
5200-0010	Project Oversight	1	30APR12A	30APR12A	30APR12A		100																																							
5200-0050	Incorporate comments and revisions	29*	25JUN12A	31JUL12A	27JUN12		100																																							
5200-0060	Second distribution	0	30JUL12A	31JUL12A	09JUL12		100																																							
5200-0070	Sign and release	1	31JUL12A	31JUL12A	11JUL12		100																																							
5200-1610	FINISH DCPS System	0		10JUL14	12MAY14	42	0	◆ ▼ FINISH DCPS System																																						
PSRTC Requirements Document																																														
Team																																														
5200-0080	Discuss new scope and program design	117*	18MAY12A	01NOV12	07JUN12	113	50	H Discuss new scope and program design																																						
5200-0100	Distribute draft and solicit comment	7	27NOV12	05DEC12	09JUL12	426	0	H Distribute draft and solicit comment																																						
Hatcher																																														
5200-0090	Prepare first draft	107*	25JUN12A	26NOV12	27JUN12	328	20	H Prepare first draft																																						
5200-0110	Incorporate comments & revision	7	06DEC12	14DEC12	18JUL12	426	0	H Incorporate comments & revision																																						
5200-0120	Second distribution	7	06DEC12	14DEC12	27JUL12	426	0	H Second distribution																																						
5200-0130	Sign and release	2	17DEC12	18DEC12	31JUL12	426	0	H Sign and release																																						
DCPS Algorithm Requirements Document																																														
Team																																														
5200-0140	Develop algorithm philosophy	0*	06DEC12	05DEC12	27JUN12	404	25	H Develop algorithm philosophy																																						
5200-0160	Distribute draft and solicit comment	7	18DEC12	04JAN13	27JUL12	404	0	H Distribute draft and solicit comment																																						
Hatcher																																														
5200-0150	Prepare first draft	0*	18DEC12	17DEC12	18JUL12	404	35	H Prepare first draft																																						
5200-0170	Incorporate comments and revis	7	07JAN13	15JAN13	07AUG12	404	0	H Incorporate comments and revis																																						
5200-0180	Second distributio	7	16JAN13	24JAN13	16AUG12	404	0	H Second distributio																																						

Activity ID	Activity Description	Work Days	Forecast Start	Forecast Finish	BL FINISH	Total Float	% Comp	Gantt Chart																																			
								FY13												FY14												FY15											
								S	O	N	D	J	F	M	A	M	J	J	A	S	O	N	D	J	F	M	A	M	J	J	A	S	O	N	D	J	F	M	A	M	J	J	A
5200-0190	Sign and release	2	25JAN13	28JAN13	20AUG12	404	0	Sign and release																																			
DCPS Algorithm Development																																											
Team																																											
5200-0240	Create information data sheet	14	15JAN13	31JAN13	04OCT12	373	5	Create information data sheet																																			
5200-0250	Information data sheet prep. & sign	28	01FEB13	12MAR13	13NOV12	373	0	Information data sheet prep. & sign																																			
Hatcher																																											
5200-0200	Peer review preparation	14	01NOV12	20NOV12	02AUG12	373	0	Peer review preparation																																			
5200-0200A	FDR Review Preparation	9	21NOV12	05DEC12		433	0	FDR Review Preparation																																			
5200-0200B	FDR	0		05DEC12		433	0	FDR																																			
5200-0210	Algorithm methodology peer revw	1	03JAN13	03JAN13	06AUG12	373	0	Algorithm methodology peer revw																																			
5200-0220	Incorporate chit	7	04JAN13	14JAN13	15AUG12	373	0	Incorporate chit																																			
Titus																																											
5200-0230	Protected elements list	146*	21MAY12A	17DEC12	14SEP12	386	40	Protected elements list																																			
5200-0260	Prepare and control DCPS alg. notebook	119*	06AUG12A	31JAN13	03JAN13	328	60	Prepare and control DCPS alg. notebook																																			
Coefficient & Settings Develop & Verify Code																																											
Hatcher																																											
5200-0290	Define verification code	28	13FEB13	22MAR13	22JAN13	305	0	Define verification code																																			
5200-0300	Prepare verification code	30	25MAR13	03MAY13	05MAR13	305	0	Prepare verification code																																			
Erickson																																											
5200-0270	Develop DCPS coefficient database	45	03DEC12*	12FEB13	04DEC12	305	0	Develop DCPS coefficient database																																			
Titus																																											
5200-0310	Test verification code	30	06MAY13	17JUN13	16APR13	305	0	Test verification code																																			
DCPS for PSRTC																																											
Hatcher																																											
5200-1620	PSRTC Background	7	13NOV13	21NOV13	25SEP13	127	0	PSRTC Background																																			
5200-1630	Design PSRTC interface to DCPS code	9	22NOV13	06DEC13	08OCT13	127	0	Design PSRTC interface to DCPS code																																			
5200-1640	Write PSRTC Interface	15	09DEC13	08JAN14	29OCT13	127	0	Write PSRTC Interface																																			
5200-1650	Add DCPS variables to ppcc.psrtc in MDSplus	6	09JAN14	16JAN14	06NOV13	127	0	Add DCPS variables to ppcc.psrtc in MDSplus																																			
5200-1660	PSRTC testing	13	17JAN14	04FEB14	25NOV13	127	0	PSRTC testing																																			
Water PLC																																											
Zhao																																											
5200-0320	Design	184*	16APR12A	14JAN13	14JAN13	203	40	Design																																			
5200-0330	Fabrication	42	07DEC12	13FEB13	13FEB13	203	0	Fabrication																																			
5200-0340	Bench Testing	19	14FEB13	12MAR13	12MAR13	203	0	Bench Testing																																			
5200-0350	Installation	65	13MAR13*	12JUN13	12JUN13	203	0	Installation																																			
5200-0360	System Testing	65	13JUN13	16SEP13	16SEP13	203	0	System Testing																																			
5200-0370	Documentation	40	17SEP13	11NOV13	11NOV13	203	0	Documentation																																			
DCPS HW: Verify Junction Area Config																																											
Schneider																																											
5200-0400	Update Documentation (not including drafting)	375*	16APR12A	14OCT13	24MAY12	92	10	Update Documentation (not including drafting)																																			
5200-0420	Research	107*	25JUN12A	26NOV12	22JUN12	92	75	Research																																			

Activity ID	Activity Description	Work Days	Forecast Start	Forecast Finish	BL FINISH	Total Float	% Comp	FY13												FY14												FY15											
								S O N D J F M A M J J A S												S O N D J F M A M J J A S												S O N D J F M A M J J A S											
5200-0390	Trace All Interconnections	108*	23JUL12A	02JAN13	23MAY12	72	10	Trace All Interconnections																																			
5200-0410	Cross Referen/Verify Coil Current Signals w/FCPC	41*	25OCT12A	02JAN13	31MAY12	72	50	Cross Referen/Verify Coil Current Signals w/FCPC																																			
5200-0380	Remove, Tag & Document All Unused Cables	5	31OCT12	06NOV12	15MAY12	104	0	Remove, Tag & Document All Unused Cables																																			
DCPS HW: Draft Requirements Document																																											
Schneider																																											
5200-0430	Write Requirements, Acquire Inputs/Comments/Corr	13	03JAN13	21JAN13	12JUL12	72	0	Write Requirements, Acquire Inputs/Comments/Corr																																			
5200-0440	Re-Write & Release	3	22JAN13	24JAN13	17JUL12	72	0	Re-Write & Release																																			
DCPS HW: System Level Design																																											
Schneider																																											
5200-0470	Junction Area Rack Layout	156*	16APR12A	26NOV12	05SEP12	138	80	Junction Area Rack Layout																																			
5200-0450	Write Cross Reference Verification Matri	10	25JAN13	07FEB13	31JUL12	72	0	Write Cross Reference Verification Matri																																			
5200-0460	Generate WCL's, Block Diagrams	20	08FEB13	07MAR13	28AUG12	72	0	Generate WCL's, Block Diagrams																																			
5200-0480	Test Requirements (Box & System Level)	15	08MAR13	28MAR13	26SEP12	72	0	Test Requirements (Box & System Level)																																			
5200-0490	Test Procedure (Box & System Level)	15	29MAR13	18APR13	17OCT12	72	0	Test Procedure (Box & System Level)																																			
5200-0500	Comissioning Requirement	15	19APR13	09MAY13	07NOV12	72	0	Comissioning Requirement																																			
5200-0510	Comissioning Procedure	10	10MAY13	23MAY13	21NOV12	72	0	Comissioning Procedure																																			
5200-0520	Operations Procedures (Operators Manual)	20	24MAY13	21JUN13	21DEC12	72	0	Operations Procedures (Operators Manual)																																			
DCPS HW: DCP Hardware																																											
Schneider																																											
5200-0560	Level 1 Fault Interfac	209*	16APR12A	18FEB13	18FEB13	176	10	Level 1 Fault Interfac																																			
5200-0570	Fault Reset Interfac	219*	16APR12A	04MAR13	04MAR13	176	10	Fault Reset Interfac																																			
5200-0730	Additional Drafting	283*	08FEB13	31MAR14	31MAR14	113	0	Additional Drafting																																			
5200-0530	Analog I/O Interface	8	24JUN13	03JUL13	11JAN13	72	0	Analog I/O Interface																																			
5200-0540	Digital I/O Interfac	8	08JUL13	17JUL13	23JAN13	72	0	Digital I/O Interfac																																			
5200-0550	House Clock, PDP, DCP Interfaces	10	18JUL13	31JUL13	06FEB13	72	0	House Clock, PDP, DCP Interfaces																																			
5200-0580	Software/Limit File Update Interface	10	01AUG13	14AUG13	18MAR13	72	0	Software/Limit File Update Interface																																			
5200-0590	Interface Chassi	12	15AUG13	30AUG13	03APR13	72	0	Interface Chassi																																			
5200-0600	Cable Interfaces	10	03SEP13	16SEP13	17APR13	72	0	Cable Interfaces																																			
5200-0610	Cables	10	17SEP13	30SEP13	01MAY13	72	0	Cables																																			
5200-0620	Test & Maintenance Equipment	10	01OCT13	14OCT13	15MAY13	72	0	Test & Maintenance Equipment																																			
5200-0630	Block Diagram, Schematics, WCLs, Chassis	15	15OCT13	04NOV13	06JUN13	72	0	Block Diagram, Schematics, WCLs, Chassis																																			
5200-0640	Test Requirement	10	05NOV13	18NOV13	20JUN13	72	0	Test Requirement																																			
5200-0650	Test procedure	15	19NOV13	11DEC13	15JUL13	72	0	Test procedure																																			
5200-0660	Chassis Including Real Time Computer	8	12DEC13	02JAN14	25JUL13	72	0	Chassis Including Real Time Computer																																			
5200-0670	Circuits	15	03JAN14	23JAN14	15AUG13	72	0	Circuits																																			
5200-0680	Cables	15	24JAN14	13FEB14	06SEP13	72	0	Cables																																			
5200-0690	Test & Maintenance Equipment	8	14FEB14	25FEB14	18SEP13	72	0	Test & Maintenance Equipment																																			
5200-0700	Test Circuits & Chassis	15	26FEB14	18MAR14	09OCT13	72	0	Test Circuits & Chassis																																			
Erickson																																											
5200-0705	Order Real time computer (5200-0170)	33	15APR13*	30MAY13	30MAY13	316	0	Order Real time computer (5200-0170)																																			
5200-0710	REAL TIME COMPUTER	1	31MAY13	31MAY13	31MAY13	316	0	REAL TIME COMPUTER																																			

Activity ID	Activity Description	Work Days	Forecast Start	Forecast Finish	BL FINISH	Total Float	% Comp	FY13												FY14												FY15											
								S O N D J F M A M J J A S												S O N D J F M A M J J A S												S O N D J F M A M J J A S											
5200-0715	Order Real Time computer spare (5200-0720)	31	06JAN14*	17FEB14	17FEB14	142	0																																				
5200-0720	REAL TIME COMPUTER SPARE	1	18FEB14	18FEB14	18FEB14	142	0																																				
LP Calculator Redundancy																																											
Schneider																																											
5200-0740	Investigate Redundancy and Failsafe Issues	8	19MAR14	28MAR14	21OCT13	72	0	Investigate Redundancy and Failsafe Issues																																			
Fault Tree Analysis																																											
Schneider																																											
5200-0750	Failure Mode Analysis	8	31MAR14	09APR14	31OCT13	72	0	Failure Mode Analysis																																			
DCP PC Auto Tester																																											
Schneider																																											
5200-0760	Capture Requirements	151*	21MAY12A	02JAN13	12NOV12	282	45	Capture Requirements																																			
5200-0770	Write Requirements Document: System	151*	21MAY12A	02JAN13	19NOV12	282	10	Write Requirements Document: System																																			
5200-0780	Write Requirements Document: Hardware	151*	21MAY12A	02JAN13	28NOV12	282	10	Write Requirements Document: Hardware																																			
5200-0790	Write Requirements Document: Software	151*	21MAY12A	02JAN13	05DEC12	282	15	Write Requirements Document: Software																																			
5200-0800	Write Requirements Document: Interface	151*	21MAY12A	02JAN13	12DEC12	282	10	Write Requirements Document: Interface																																			
5200-0810	System Design: Hardware Design (cables & chassis	5	03JAN13	09JAN13	19DEC12	282	0	System Design: Hardware Design (cables & chassis																																			
5200-0815	Submit Requisition to Procure I/O and Software	31	10JAN13	21FEB13	11FEB13	313	0	Submit Requisition to Procure I/O and Software																																			
5200-0820	System Design: Write Software	30	10JAN13	20FEB13	08FEB13	282	0	System Design: Write Software																																			
5200-0830	Documentation: Block Diagram, WCL's, Schematics	6	21FEB13	28FEB13	18FEB13	282	0	Documentation: Block Diagram, WCL's, Schematics																																			
5200-0816	Procure I/O and Software	1	22FEB13	22FEB13	12FEB13	313	0	Procure I/O and Software																																			
5200-0840	Fabrication: Cables	15	01MAR13	21MAR13	11MAR13	282	0	Fabrication: Cables																																			
5200-0860	Test: Write Test Requirments	7	22MAR13	01APR13	20MAR13	282	0	Test: Write Test Requirments																																			
5200-0870	Test: Write Test Procedure	5	02APR13	08APR13	27MAR13	282	0	Test: Write Test Procedure																																			
5200-0850	Fabrication: Chassis Including PC Integration	15	09APR13	29APR13	17APR13	282	0	Fabrication: Chassis Including PC Integration																																			
5200-0880	Box Level Test	5	30APR13	06MAY13	24APR13	282	0	Box Level Test																																			
5200-0890	Installation	8	07MAY13	16MAY13	06MAY13	282	0	Installation																																			
5200-0900	System Level Test	10	17MAY13	31MAY13	20MAY13	282	0	System Level Test																																			
DCP Installation																																											
Schneider																																											
5200-0950	As Builds: Hardware configuration verification	176*	16APR12A	02JAN13	08JUL13	422	45	As Builds: Hardware configuration verification																																			
5200-0910	Write Installation Procedure	2	10APR14	11APR14	04NOV13	72	0	Write Installation Procedure																																			
5200-0920	Remove Unused Junction Area Equipmen	5	14APR14	18APR14	11NOV13	72	0	Remove Unused Junction Area Equipmen																																			
5200-0930	Install DCP	7	21APR14	29APR14	20NOV13	72	0	Install DCP																																			
5200-0940	Post Installation Test	20	30APR14	28MAY14	20DEC13	72	0	Post Installation Test																																			
DCPS Software - Communication																																											
Erickson																																											
5200-0980	Project oversight	436*	25JUN12A	31MAR14	31MAR14	113	21	Project oversight																																			
5200-0990	Interactions with Hardware	351*	11JUL12A	05DEC13	10MAY12	187	23	Interactions with Hardware																																			
DCPS Software - Conceptual Design																																											
Erickson																																											
5200-1000	PREPARE WORK PLANNING FORM	1	02APR12A	30APR12A	30APR12A		100																																				

Activity ID	Activity Description	Work Days	Forecast Start	Forecast Finish	BL FINISH	Total Float	% Comp	FY13												FY14												FY15											
								S O N D J F M A M J J A S												S O N D J F M A M J J A S												S O N D J F M A M J J A S											
5200-1030	R&D (Prototype iHawk	10	02APR12A	13APR12A	13APR12A		100																																				
5200-1010	Prep System Description	2	03APR12A	04APR12A	04APR12A		100																																				
5200-1020	Prep System Requirements	2	05APR12A	06APR12A	06APR12A		100																																				
5200-1040	Analysis	5	16APR12A	20APR12A	20APR12A		100																																				
5200-1050	CDR Prep	5	23APR12A	27APR12A	27APR12A		100																																				
5200-1060	CONDUCT CDR	1	30APR12A	30APR12A	30APR12A		100																																				
DCPS Software - Preliminary Design																																											
Schneider																																											
5200-1170	IO Interface	108*	23JUL12A	02JAN13	20JUL12	72	15	IO Interface																																			
Erickson																																											
5200-1100	Data Subsystem	171*	21MAY12A	30JAN13	21JUN12	75	15	Data Subsystem																																			
5200-1120	Algorithm Subsystem	171*	21MAY12A	30JAN13	06JUL12	75	10	Algorithm Subsystem																																			
5200-1130	Management Subsystem	171*	21MAY12A	30JAN13	21JUN12	52	10	Management Subsystem																																			
5200-1070	Software Design	147*	25JUN12A	30JAN13	17AUG12	57	6	Software Design																																			
5200-1080	Gui Subsystem	136*	25JUN12A	15JAN13	06JUL12	72	5	Gui Subsystem																																			
5200-1090	Security Subsystem	147*	25JUN12A	30JAN13	06JUL12	42	5	Security Subsystem																																			
5200-1160	System Design	34	05DEC12	30JAN13	17SEP12	52	0	System Design																																			
5200-1110	Monitoring Subsystem	10	17JAN13	30JAN13	21JUN12	42	0	Monitoring Subsystem																																			
5200-1190	Security Measures	10	17JAN13	30JAN13	20JUL12	42	0	Security Measures																																			
5200-1180	Network Topology	10	31JAN13	13FEB13	03AUG12	42	0	Network Topology																																			
5200-1200	PDR Prep	5	14FEB13	20FEB13	24SEP12	42	0	PDR Prep																																			
5200-1210	CONDUCT PDR	1	20FEB13	20FEB13	25SEP12	42	0	CONDUCT PDR																																			
DCPS Software - Final Design																																											
Erickson																																											
5200-1220	Disposition PDR Chit	20	21FEB13	20MAR13	23OCT12	42	0	Disposition PDR Chit																																			
5200-1230	Update Design	15	21MAR13	10APR13	13NOV12	42	0	Update Design																																			
5200-1250	FDR Prep	5	04APR13	10APR13	20NOV12	42	0	FDR Prep																																			
5200-1260	CONDUCT FDR	1	10APR13	10APR13	21NOV12	42	0	CONDUCT FDR																																			
5200-1240	Prep Procurement Specs	1	11APR13	11APR13	14NOV12	350	0	Prep Procurement Specs																																			
DCPS Software - Implementation																																											
Erickson																																											
5200-1270	Software Implementation	150	11APR13	12NOV13	16SEP13	42	0	Software Implementation																																			
5200-1280	Gui Subsystem	60	11APR13	08JUL13	26FEB13	132	0	Gui Subsystem																																			
5200-1290	Security Subsystem	20	11APR13	08MAY13	21DEC12	272	0	Security Subsystem																																			
5200-1300	Data Subsystem	40	11APR13	06JUN13	29JAN13	212	0	Data Subsystem																																			
5200-1310	Monitoring Subsystem	20	16OCT13	12NOV13	14OCT13	102	0	Monitoring Subsystem																																			
5200-1320	Algorithm Subsystem	60	13NOV13*	18FEB14	11DEC13	42	0	Algorithm Subsystem																																			
5200-1330	Management Subsystem	40	19FEB14	15APR14	17FEB14	42	0	Management Subsystem																																			
DCSP Software - Installation																																											
Erickson																																											
5200-1370	System Installation	10	16APR14*	29APR14	03MAR14	42	0	System Installation																																			

Activity ID	Activity Description	Work Days	Forecast Start	Forecast Finish	BL FINISH	Total Float	% Comp	FY13												FY14												FY15														
								S	O	N	D	J	F	M	A	M	J	J	A	S	S	O	N	D	J	F	M	A	M	J	J	A	S	S	O	N	D	J	F	M	A	M	J	J	A	S
5200-1380	System testing	25	30APR14	04JUN14	07APR14	42	0																																							
5200-1390	Software testing	25	05JUN14	10JUL14	12MAY14	42	0																																							
PDP Timer: Background Work																																														
Mozulay																																														
5200-1400	Reverse engineer present PDP electronics	20*	21MAY12A	14JUN12A	07MAY12		100																																							
5200-1410	Prep System Requirements	20*	21MAY12A	18JUN12A	11MAY12		100																																							
5200-1420	100Peer review	29*	25JUN12A	23JUL12A	18MAY12		100																																							
PDP Timer: Design																																														
Mozulay																																														
5200-1430	Design Drawings: Schematic	73*	25JUN12A	28SEP12A	30JUL12		100																																							
5200-1450	FDR Prep	5	24SEP12A	28SEP12A	04SEP12		100																																							
5200-1460	Conduct FDR	0	16OCT12A	16OCT12A	05SEP12		100																																							
5200-1440	Circuit board layout	8	12NOV12	21NOV12	27AUG12	438	0																																							
PDP Timer: Procurement																																														
Mozulay																																														
5200-1470	Order Part	12	30NOV12	17DEC12	21SEP12	424	0																																							
PDP Timer: Fabrication & Assembly																																														
Mozulay																																														
5200-1490	Bill of Material	4	30NOV12	05DEC12	11SEP12	420	0																																							
5200-1500	PCB test procedure	7	30NOV12	10DEC12	14SEP12	424	0																																							
5200-1510	Assembly	10	06DEC12	19DEC12	05OCT12	420	0																																							
5200-1520	Assembly Test & Debug	2	20DEC12	21DEC12	09OCT12	420	0																																							
PDP Timer: Installation & Testing																																														
Mozulay																																														
5200-1530	Installation Procedure	10	30NOV12	13DEC12	28SEP12	424	0																																							
5200-1540	PTP	5	20DEC12	04JAN13	16OCT12	420	0																																							
Analysis Div scope																																														
Titus																																														
5200-1550	Initial Test of Subset of Algorithms	96*	01AUG12A	17DEC12	13JAN11	328	20																																							
5200-1560	TF Torsional Shear recalc for Charlies Disruptio	93*	06AUG12A	17DEC12	03AUG12	328	80																																							
5200-1570	OOP Torque recalc for Charlies Disruption Curren	93*	06AUG12A	17DEC12	24AUG12	328	80																																							
5200-1580	Evaluation of Subset of Algorithms	81*	06AUG12A	29NOV12	08OCT12	328	60																																							
5200-1590	All Algorithms to Hatcher	139*	06AUG12A	28FEB13	31JAN13	328	60																																							
5200-1600	Evaluate and Revise Final Algorithm Implementati	192*	06AUG12A	14MAY13	14MAY13	328	50																																							
Final Design																																														
FY105200A	FY10 Actual Cost	110	03MAY10A	30SEP10A	30SEP10A		100																																							
5200-010	Woolley October Budget	20	01OCT10A	29OCT10A	28OCT10		100																																							
20	Systems Code Development	207	01NOV10A	29JUL11A	27APR11		100																																							
08	Prep System Description	142	08NOV10A	03MAR11A	12NOV10		100																																							
09	Prep System Requirements	137	15NOV10A	03MAR11A	07DEC10		100																																							

Activity ID	Activity Description	Work Days	Forecast Start	Forecast Finish	BL FINISH	Total Float	% Comp
5501-0029	PDR Prep & PDR	6	16JUN10A	23JUN10A	23JUN10A		100
5501-0026	Analysis Mech: thermal, EM & stress-CHI BUS	2	22JUN10A	23JUN10A	23JUN10A		100
5501-0027	Analysis Elec: electrical-CHI BUS	2	22JUN10A	23JUN10A	23JUN10A		100
5501-0030	Disposition of PDR CHITS	30	24JUN10A	05AUG10A	05AUG10A		100
5501-0032	OH Coaxial Bus Prelim Dsgn Updat/Optim Cmpl	8	24JUN10A	06JUL10A	06JUL10A		100
5501-0033	PF Bus Prelim Dsgn Updat/Optim Cmpl	10	07JUL10A	20JUL10A	20JUL10A		100
5501-0034	TF Bus Prelim Dsgn Updat/Optim Cmpl	10	21JUL10A	03AUG10A	03AUG10A		100
1305-0160	N/A OH Bus Bar Analysis(xfer f/j. Chrzanowski)	39*	02AUG10A	30SEP10A	30SEP10A		100
5501-0035	CHI Bus Prelim Dsgn Updat/Optim Cmpl	10	04AUG10A	17AUG10A	17AUG10A		100
5501-0037	Prep DOE CD-2 (Lehman) Review	5	04AUG10A	10AUG10A	10AUG10A		100
5501-0038	DOE CD-2 (Lehman) Review	1	11AUG10A	11AUG10A	11AUG10A		100

Fabrication / Assembly

5501-0031	Eng Dsn & CAD Model Updates	38	23JUN10A	25AUG10A	25AUG10A		100
-----------	-----------------------------	----	----------	----------	----------	--	-----

Management & Documentation

Project Management

5501-0042S	Oversight/Management	200*	15OCT12A	06AUG13	06AUG13	174	6
5501-START	ECP-049 START TASK	0	15OCT12A				100
5501-FINIS	ECP-049 FINISH TASK	0	07AUG13			174	0

CHI Bus Analysis

Final Design

5501-0042C	CHI Design/Analysis Iterations: New Ring, Extens	30*	15OCT12A	27NOV12	27NOV12	174	50
5501-0042D	CHI bus bar analysis: Lorentz, thermal, validati	45*	15OCT12A	18DEC12	18DEC12	198	25
5501-0042E	Prepare draft calculation	15	19DEC12	17JAN13	17JAN13	198	0
5501-0042F	Prepare final calculation	16	18JAN13	08FEB13	08FEB13	198	0
5501-0042G	Check final calculation	9	18JAN13	30JAN13	30JAN13	205	0
5501-0042J	Assembly & detailed drawings: New extensions and	12	31JAN13	15FEB13	15FEB13	293	0
5501-0042H	Check CHI connection to casing with reactions fr	4	11FEB13	14FEB13	14FEB13	198	0
5501-0042I	Revise and file Rev to Casing Calc	6	15FEB13	22FEB13	22FEB13	198	0

Procurement

5501-0042A	Submit Requisition: New supports	20*	15OCT12A	09NOV12	09NOV12	333	25
5501-0042B	Procure parts for new supports	1	12DEC12	12DEC12	12DEC12	333	0

Additional Design & Validation

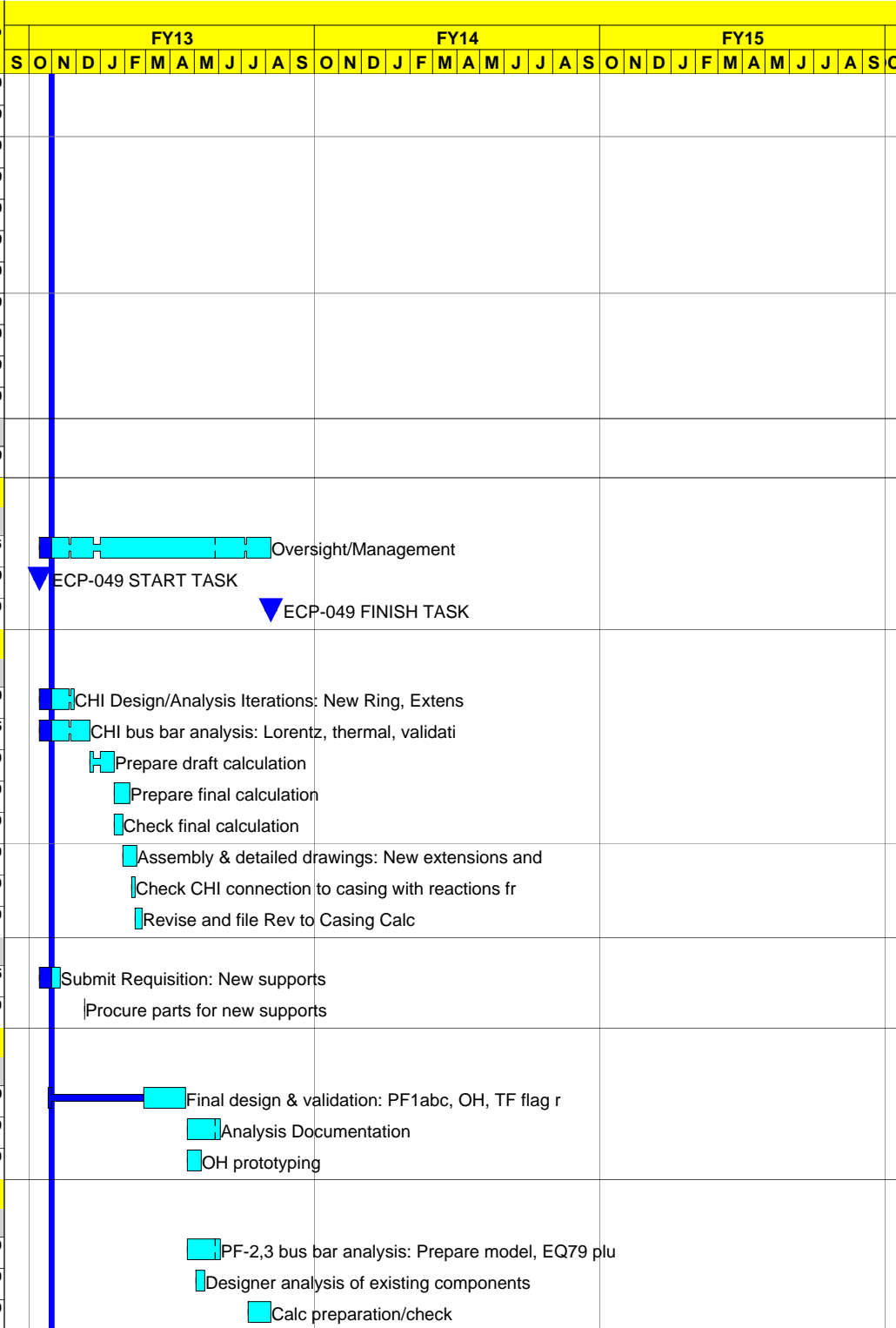
Final Design

5501-0042K	Final design & validation: PF1abc, OH, TF flag r	117*	26OCT12A	19APR13	19APR13	198	50
5501-0042L	Analysis Documentation	30	22APR13	03JUN13	03JUN13	218	0
5501-0042M	OH prototyping	15	22APR13	10MAY13	10MAY13	233	0

PF2/3 Bus Bar & Coil Lead Analysis

Final Design

5501-0042O	PF-2,3 bus bar analysis: Prepare model, EQ79 plu	30	22APR13	03JUN13	03JUN13	198	0
5501-0042N	Designer analysis of existing components	8	03MAY13	14MAY13	14MAY13	231	0
5501-0042P	Calc preparation/check	20	10JUL13	06AUG13	06AUG13	174	0



Activity ID	Activity Description	Work Days	Forecast Start	Forecast Finish	BL FINISH	Total Float	% Comp	FY13												FY14												FY15											
								S O N D J F M A M J J A S												S O N D J F M A M J J A S												S O N D J F M A M J J A S											
								S	O	N	D	J	F	M	A	M	J	J	A	S	S	O	N	D	J	F	M	A	M	J	J	A	S	S	O	N	D	J	F	M	A	M	J
PF4/5 Coil Leads																																											
Final Design																																											
5501-0042Q	Analysis of existing components	20	22APR13	17MAY13	17MAY13	208	0	■ Analysis of existing components																																			
5501-0042R	Calculation preparation/checking	20	20MAY13	17JUN13	17JUN13	208	0	■ Calculation preparation/checking																																			
OH Bus																																											
Final Design																																											
5501-0046	Busbar System Design-OH BUS	176*	17AUG10A	29APR11A	28FEB11		100																																				
5501-0047	Update CAD - OH BUS	176*	17AUG10A	29APR11A	28FEB11		100																																				
5501-0049	Analysis/Calc: EM/Stress/Thermal-OH BUS	176*	17AUG10A	29APR11A	28FEB11		100																																				
5501-0050	Detail Drawings-OH BUS	143*	04OCT10A	29APR11A	04APR11		100																																				
5501-0051	Design Validation-OH BUS	41*	14MAR11A	29APR11A	04APR11		100																																				
5501-0051A	Updt Models/Dwgs Ready for Signoff-OH BUS	10	11APR11A	29APR11A	09MAY11		100																																				
Fabrication / Assembly																																											
5501-0042	Final Design	195*	17AUG10A	29APR11A	28FEB11		100																																				
5501-0098	Documentn: Fab/Assy Procedure-OH BUS	5	23APR13	29APR13	07OCT13	142	0	■ Documentn: Fab/Assy Procedure-OH BUS																																			
5501-0099	Fabricatn: pre-installation components-OH BUS	20	30APR13*	28MAY13	04NOV13	142	0	■ Fabricatn: pre-installation components-OH BUS																																			
5501-0118	Documentation: Installation Procedure-OH BUS	5	14MAY13	20MAY13	28OCT13	227	0	■ Documentation: Installation Procedure-OH BUS																																			
5501-0100	Assembly: pre-installatn components-OH BUD	20	29MAY13	25JUN13	04DEC13	142	0	■ Assembly: pre-installatn components-OH BUD																																			
5501-0101	Insulation & Protective Layer-OH BUS	10	12JUN13	25JUN13	04DEC13	142	0	■ Insulation & Protective Layer-OH BUS																																			
5501-0102	Electrical Testing-OH BUS	5	19JUN13	25JUN13	04DEC13	142	0	■ Electrical Testing-OH BUS																																			
5501-0114	Fabricatn: pre-installation components-OH BUS	20	23AUG13	20SEP13	10MAR14	142	0	■ Fabricatn: pre-installation components-OH BUS																																			
Installation																																											
5501-0119	Field Fit Up, Fabrication, Installation-OH BUS	65	19DEC13	31MAR14	10JUN14	81	0	■ Field Fit Up, Fabrication, Installation-OH BUS																																			
Testing																																											
5501-0120	Testing-OH BUS	1	01APR14	01APR14	11JUN14	112	0	■ Testing-OH BUS																																			
PF Bus																																											
Final Design																																											
5501-0055	Busbar System Design-PF BUS	176*	17AUG10A	29APR11A	28FEB11		100																																				
5501-0056	Update CAD-PF BUS	176*	17AUG10A	29APR11A	28FEB11		100																																				
5501-0058	Analysis/Calc: EM/Stress/Thermal-PF BUS	176*	17AUG10A	29APR11A	28FEB11		100																																				
5501-0059	Detail Drawings-PF BUS	143*	04OCT10A	29APR11A	04APR11		100																																				
5501-0060	Design Validation-PF BUS	41*	14MAR11A	29APR11A	04APR11		100																																				
5501-0060A	Updt Models/Dwgs Ready for Signoff-PF BUS	10	11APR11A	29APR11A	09MAY11		100																																				
Fabrication / Assembly																																											
5501-0105	Documentn: Fab/Assy Procedure-PF BUS	5	23APR13*	29APR13	07OCT13	182	0	■ Documentn: Fab/Assy Procedure-PF BUS																																			
5501-0123	Documentation: Installation Procedure-PF BUS	5	21MAY13	28MAY13	04NOV13	241	0	■ Documentation: Installation Procedure-PF BUS																																			
5501-0106	Fabricatn: pre-installation components-PF BUS	20	26JUN13	25JUL13	13JAN14	142	0	■ Fabricatn: pre-installation components-PF BUS																																			

Activity ID	Activity Description	Work Days	Forecast Start	Forecast Finish	BL FINISH	Total Float	% Comp	Fiscal Year Breakdown																																			
								FY13												FY14												FY15											
								S	O	N	D	J	F	M	A	M	J	J	A	S	S	O	N	D	J	F	M	A	M	J	J	A	S	S	O	N	D	J	F	M	A	M	J
Installation																																											
5501-0124	Field Fit Up, Fabrication, Installation-PF BUS	60	07JAN14	31MAR14	10JUN14	81	0																																				
Testing																																											
5501-0125	Testing-PF BUS	6	01APR14	08APR14	18JUN14	107	0																																				
TF Bus																																											
Final Design																																											
5501-0063	Busbar System Design-TF BUS	176*	17AUG10A	29APR11A	28FEB11		100																																				
5501-0064	Update CAD-TF BUS	176*	17AUG10A	29APR11A	28FEB11		100																																				
5501-0066	Analysis/Calc: EM/Stress/Thermal-TF BUS	176*	17AUG10A	29APR11A	28FEB11		100																																				
5501-0067	Detail Drawings-TF BUS	123*	01NOV10A	29APR11A	04APR11		100																																				
5501-0068	Design Validation-TF BUS	41*	14MAR11A	29APR11A	04APR11		100																																				
5501-0068A	Updt Models/Dwgs Ready for Signoff-TF BUS	10	11APR11A	29APR11A	09MAY11		100																																				
Fabrication / Assembly																																											
5501-0109	Documentn: Fab/Assy Procedure-TF BUS	5	30APR13	06MAY13	14OCT13	197	0																																				
5501-0129	Documentation: Installation Procedure-TF BUS	5	29MAY13	04JUN13	11NOV13	241	0																																				
5501-0110	Fabricatn: pre-installation components-TF BUS	20	26JUL13	22AUG13	10FEB14	142	0																																				
Installation																																											
5501-0130	Field Fit Up, Fabrication, Installation-TF BUS	65	19DEC13	31MAR14	10JUN14	81	0																																				
Testing																																											
5501-0131	Testing-TF BUS	2	01APR14	02APR14	12JUN14	111	0																																				
CHI Bus																																											
Final Design																																											
5501-0071	Busbar System Design-CHI BUS	176*	17AUG10A	29APR11A	28FEB11		100																																				
5501-0072	Update CAD-CHI BUS	176*	17AUG10A	29APR11A	28FEB11		100																																				
5501-0074	Analysis/Calc: EM/Stress/Thermal-CHI BUS	176*	17AUG10A	29APR11A	28FEB11		100																																				
5501-0075	Detail Drawings-CHI BUS	123*	01NOV10A	29APR11A	04APR11		100																																				
5501-0076	Design Validation-CHI BU	41*	14MAR11A	29APR11A	04APR11		100																																				
5501-0076A	Updt Models/Dwgs Ready for Signoff-CHI BUS	10	11APR11A	29APR11A	09MAY11		100																																				
5501-0078A	Coil Bus Runs - Peer review	0		18MAY11A	01OCT10		100																																				
5501-0077	Update Cost & Schedule Estimate	5	24MAY11A	31MAY11A	16MAY11		100																																				
5501-0078	FDR Prep	14*	06JUN11A	20JUN11A	23MAY11		100																																				
5501-0079	FDR 5500	3	22JUN11A	24JUN11A	15JUN11		100																																				
Fabrication / Assembly																																											
5501-0113	Documentn: Fab/Assy Procedure-CHI BUS	5	07MAY13	13MAY13	21OCT13	212	0																																				
5501-0135	Documentation: Installation Procedure-CHI BUS	5	05JUN13	11JUN13	18NOV13	241	0																																				
Installation																																											
5501-0136	Field Fit Up, Fabrication, Installation-CHI BUS	65	19DEC13	31MAR14	10JUN14	110	0																																				

Activity ID	Activity Description	Work Days	Forecast Start	Forecast Finish	BL FINISH	Total Float	% Comp	Schedule																																			
								FY13												FY14												FY15											
								S	O	N	D	J	F	M	A	M	J	J	A	S	O	N	D	J	F	M	A	M	J	J	A	S	O	N	D	J	F	M	A	M	J	J	A
Testing																																											
5501-0137	Testing-CHI BUS	3	01APR14	03APR14	13JUN14	110	0	Testing-CHI BUS																																			
Inner TF Bundle Design																																											
Final Design																																											
1304-0120	N/A Analyze TF Bus Bar (xfer f/j. Chrzanowski)	17	30SEP10A	30SEP10A	30SEP10A		100																																				
Procurement																																											
5501-0082	Prep Req & Procurement Package	26*	15OCT12A	19NOV12	14FEB13	107	25	Prep Req & Procurement Package																																			
5501-0083	Submit Req to Procurement	1	19NOV12	19NOV12	15FEB13	107	0	Submit Req to Procurement																																			
5501-0084	Procurement Lead Time	21	20NOV12	20DEC12	29MAR13	107	0	Procurement Lead Time																																			
5501-0085	Award Coil Bus Run	1	20DEC12	20DEC12	01APR13	107	0	Award Coil Bus Run																																			
Fabrication / Assembly																																											
5501-0086	Copper Total	80	21DEC12	22APR13	25JUL13	107	0	Copper Total																																			
5501-0087	Insulation & Protection Total	80	21DEC12	22APR13	25JUL13	107	0	Insulation & Protection Total																																			
5501-0088	SS Hardware, Fittings, Materials Total	80	21DEC12	22APR13	25JUL13	107	0	SS Hardware, Fittings, Materials Total																																			
5501-0089	G10 FR4 Total	80	21DEC12	22APR13	25JUL13	107	0	G10 FR4 Total																																			
5501-0090	Fab & Safety Consumables Total	80	21DEC12	22APR13	25JUL13	107	0	Fab & Safety Consumables Total																																			
5501-0091	Struc Support Material Total	80	21DEC12	22APR13	25JUL13	107	0	Struc Support Material Total																																			
5501-0092	Misc Total	80	21DEC12	22APR13	25JUL13	107	0	Misc Total																																			
5501-0097	Fab/Assembly	140	23APR13	08NOV13	21FEB14	107	0	Fab/Assembly																																			
Title III																																											
5501-0080	Procurementsupport	173*	26OCT12A	11JUL13	13JUN14	142	25	Procurementsupport																																			
Job: 6100 - Control Sys Data Acquisition -SICHTA																																											
Final Design																																											
FY106100	FY10 Actual Cost	85	01JAN10A	30APR10A	30APR10A		100																																				
6100-0026	Update System documents - PDR	27	03MAY10A	09JUN10A	09JUN10A		100																																				
FY106100A	FY10 Actual Cost	110	03MAY10A	30SEP10A	30SEP10A		100																																				
6100-0027	PDR Prep	10	10JUN10A	23JUN10A	23JUN10A		100																																				
6100-0032	Disposition PDR Chits - FDR	30	24JUN10A	05AUG10A	05AUG10A		100																																				
6100-0034	Delay design for NSTX run support	1	01OCT10A	29OCT10A	21DEC10		100																																				
6100-0036	CAMAC Memory PCB design	94*	21DEC10A	09MAY11A	09FEB11		100																																				
6100-0037	CAMAC Replacement selection	60*	21DEC10A	22MAR11A	23MAR11		100																																				
6100-0038	Cntr Stk diags data acq design	55*	21DEC10A	15MAR11A	12JAN11		100																																				
6100-0039	DAS upgrade for NSTX diagnostics	55*	21DEC10A	15MAR11A	02FEB11		100																																				
6100-0035B	PCS Software design analysis	51*	07MAR11A	29APR11A	09FEB11		100																																				

Activity ID	Activity Description	Work Days	Forecast Start	Forecast Finish	BL FINISH	Total Float	% Comp	Schedule																																			
								FY13												FY14												FY15											
								S	O	N	D	J	F	M	A	M	J	J	A	S	S	O	N	D	J	F	M	A	M	J	J	A	S	S	O	N	D	J	F	M	A	M	J
6100-0072	CAMAC Memory install	10	19NOV12	04DEC12	21OCT13	435	0																																				
6100-0073A	NTC/DARM fiber & network install	30	19NOV12	10JAN13	01APR14	355	0																																				
6100-0074	install I&C Thermocouple equipment	5	19NOV12	27NOV12	08OCT13	425	0																																				
6100-0075	Install I&C due to NTC GIS rack relocation	60	12JUL13	04OCT13	21AUG14	218	0																																				
Testing																																											
6100-0087	CAMAC Memory bench tests	15*	22NOV11A	14DEC11A	13JAN14		100																																				
6100-0089	Cntr Stk diags testing	5	28NOV12	04DEC12	15OCT13	425	0																																				
6100-0081	CS Infrastructure tests	30	10JUL13	20AUG13	24JUN14	235	0																																				
6100-0082	PSRTC Simulation PTP-034	5	21AUG13	27AUG13	01JUL14	235	0																																				
6100-0083	PSRTC PTP-035	5	28AUG13	04SEP13	09JUL14	235	0																																				
6100-0084B	PCS tesing	10	05SEP13	18SEP13	23JUL14	235	0																																				
6100-0090	test relocated I&C GIS rack systems	5	07OCT13	11OCT13	28AUG14	218	0																																				
6100-0085	Support ISTP-001	5	14OCT13	18OCT13	05SEP14	218	0																																				
6100-0088	CAMAC Memory field tests	5	04NOV13	08NOV13	20JAN14	203	0																																				
6100-0086	CAMAC Replacement system tests	60	12NOV13	17FEB14	13AUG14	142	0																																				
6100-0092	Project Ready for ISTP Target	1	18FEB14	18FEB14	08SEP14	142	0																																				
Title III																																											
6100-0000	Oversight & Coordination	1,055*	03MAY10A	25JUL14	25JUL14	295	59																																				
Job: 7100 - Project Mgt & Integration-STRYKOWSKY																																											
General Arrangement Drawings																																											
Title III																																											
CS7000020G	FY2010 General Arrangement Drawings	106	03MAY10A	30SEP10A	30SEP10A		100																																				
CS7000031G	FY2011 General Arrangement Drawings	250	01OCT10A	30SEP11A	30SEP11		100																																				
CS7000041G	FY2012 General Arrangement Drawings	249*	03OCT11A	28SEP12A	28SEP12		100																																				
CS7000053G	FY2013 General Arrangement Drawings	248*	01OCT12A	30SEP13	30SEP13	256	9																																				
CS7000054G	FY2014 General Arrangement Drawings	241	01OCT13	19SEP14	30SEP14	256	0																																				
Project Management																																											
Project Management																																											
FY097100	FY09 Actual Cost	22	23FEB09A	30SEP09A	30SEP09A		100																																				
FY107100	FY10 Actual Cost	143	01OCT09A	30APR10A	30APR10A		100																																				
CS7000020	FY2010 Project Management	106	03MAY10A	30SEP10A	30SEP10A		100																																				
FY107100A	FY10 Actual Cost	130	03MAY10A	30SEP10A	30SEP10A		100																																				

Activity ID	Activity Description	Work Days	Forecast Start	Forecast Finish	BL FINISH	Total Float	% Comp	FY13 FY14 FY15																																				
								FY13												FY14												FY15												
								S	O	N	D	J	F	M	A	M	J	J	A	S	O	N	D	J	F	M	A	M	J	J	A	S	O	N	D	J	F	M	A	M	J	J	A	S
CS7000031	FY2011 Project Management	250	01OCT10A	30SEP11A	30SEP11		100																																					
CS7000041	FY2012 Project Mangement	249*	03OCT11A	28SEP12A	28SEP12		100																																					
CS7000141W	FY2012 Project Mangement (ECP)	127*	02APR12A	28SEP12A	28SEP12		100																																					
CS7000053	FY2013 Project Management	248*	01OCT12A	30SEP13	30SEP13	251	9																																					
CS7000054	FY2014 Project Management	246	01OCT13	26SEP14	30SEP14	251	0																																					
Project Reviews																																												
Project Management																																												
CS7000031R	FY2011 Project Reviews	250	01OCT10A	30SEP11A	30SEP11		100																																					
CS7000041R	FY2012 Project Reviews	249*	03OCT11A	28SEP12A	28SEP12		100																																					
Title III																																												
CS7000020R	FY2010 Project Reviews	106	03MAY10A	30SEP10A	30SEP10A		100																																					
CS7000052	ORA support	43	01NOV13*	14JAN14	30MAY14	182	0																																					
Work Control Center																																												
Fabrication / Assembly																																												
CS7000041W	FY2012 WCC	249*	03OCT11A	28SEP12A	28SEP12		100																																					
CS7000053W	FY2013 WCC	258*	01OCT12A	14OCT13	30SEP13	246	9																																					
CS7000054W	FY2014 WCC	241	15OCT13	03OCT14	30SEP14	246	0																																					
Job: 7200 - Center Stack Management-DUDEK																																												
Project Management																																												
Project Management																																												
FY107200	FY10 Actual Cost	123	02NOV09A	30APR10A	30APR10A		100																																					

Activity ID	Activity Description	Work Days	Forecast Start	Forecast Finish	BL FINISH	Total Float	% Comp	FY13												FY14												FY15											
								S O N D J F M A M J J A S												S O N D J F M A M J J A S												S O N D J F M A M J J A S											
7300-12	FY2011 NB2 RLM's support of OPA reviews	20	03OCT11A	28OCT11A	26AUG11		100																																				
7300-23	FY2012 NB2 RLM's support of OPA reviews	20	26JUN13*	25JUL13	28FEB13	543	0	-																																			
7300-32	FY2013 NB2 RLM's support of OPA reviews **N/R**	20	27JAN14	21FEB14	28AUG13	403	0	-																																			
Title III																																											
7300-02	FY2010 NB2 RLM's support of OPA reviews	92	17MAY10A	06JUL10A	06JUL10A		100																																				
Job: 7400 - Health Physics Support-STEVENSON																																											
Fabrication / Assembly																																											
740000110	FY2011 NBI Decon HP Technical Support	250	01OCT10A	30SEP11A	03OCT11		100																																				
740000115	FY2012 EQ Removal & Relocation HP Technical Support	252*	03OCT11A	28SEP12A	21NOV12		100	-																																			
740000120	FY2012 NBI Decon HP Technical Support	248*	03OCT11A	27SEP12A	01OCT12		100	-																																			
740000125	FY2013 NBI Decon HP Technical Support	248*	01OCT12A	30SEP13	01OCT13	261	9	-																																			
740000130	FY2014 NBI Decon HP Technical Support	236	01OCT13*	12SEP14	30SEP14	261	0	-																																			
Decontamination																																											
FY107400	FY10 Actual Cost	260	01OCT09A	30SEP10A	30SEP10A		100																																				
740000100	FY2010 NBI Decon HP Technical Support	106	03MAY10A	30SEP10A	30SEP10A		100																																				
Job: 7710 - HP & Other Allocations-STRYKOWSKY																																											
HP Allocations																																											
Final Design																																											
FY09NNUL8	FY09 Actual Cost	22	23FEB09A	30SEP09A	30SEP09A		100																																				
Fabrication / Assembly																																											
CS9500080	NSTX Upgrade HP Allocations FY11	250	01OCT10A	30SEP11A	30SEP11		100																																				
CS9500090	NSTX Upgrade HP Allocations FY12	248*	03OCT11A	27SEP12A	28SEP12		100	-																																			
CS9500100	NSTX Upgrade HP Allocations FY13	248*	01OCT12A	30SEP13	30SEP13	261	9	-																																			
CS9500110	NSTX Upgrade HP Allocations FY14	236	01OCT13*	12SEP14	30SEP14	261	0	-																																			
Decontamination																																											
1180*NUL	FY10 Actual Cost	143	01OCT09A	30SEP10A	30SEP10A		100																																				
CS9500070	NSTX Upgrade HP Allocations FY2010	106	03MAY10A	30SEP10A	30SEP10A		100																																				
Other Allocations																																											
Final Design																																											
FY09NNUL	FY09 Actual Cost	22	23FEB09A	30SEP09A	30SEP09A		100																																				
1170*NUL	FY10 Actual Cost	143	01OCT09A	30SEP10A	30SEP10A		100																																				
7710-10	NSTX Upgrade Direct Allocations FY2010	106	03MAY10A	30SEP10A	30SEP10A		100																																				
Project Management																																											
9417*NUL	FY10 Actual Cost	110	01JUN10A	30SEP10A	30SEP10A		100																																				
7710-11	NSTX Upgrade Direct Allocations FY11	250	01OCT10A	30SEP11A	30SEP11		100																																				
7710-12	NSTX Upgrade Direct Allocations FY12	249*	03OCT11A	28SEP12A	28SEP12		100	-																																			

Activity ID	Activity Description	Work Days	Forecast Start	Forecast Finish	BL FINISH	Total Float	% Comp	FY13 FY14 FY15																																			
								FY13												FY14												FY15											
								S	O	N	D	J	F	M	A	M	J	J	A	S	S	O	N	D	J	F	M	A	M	J	J	A	S	S	O	N	D	J	F	M	A	M	J
7710-13	NSTX Upgrade Direct Allocations FY13	248	31OCT12*	30OCT13	30SEP13	234	0	NSTX Upgrade Direct Allocations FY13																																			
7710-14	NSTX Upgrade Direct Allocations FY14	241	31OCT13*	21OCT14	30SEP14	234	0	NSTX Upgrade Direct Allocations FY14																																			
Job: 8200 - CS & Coil Sprt Struct Instal - PERRY																																											
Diag Catalogue & Rmvl Procedures																																											
Installation																																											
8200-0030	Cat 2 cable tray on top&north Remvl & Instl Proc	83	12SEP11A	16JAN12A	26MAR12		100																																				
8200-0026	Perform bay by bay catalogue and label Elect	90*	17OCT11A	31JAN12A	30JAN12		100																																				
8200-0026A	Perform bay by bay cable removal	43*	17OCT11A	16DEC11A	23DEC11		100																																				
8200-0026B	Perform bay by bay CAD Support	209*	17OCT11A	31JUL12A	16AUG12		100																																				
8200-0028	Write Mechanical General procedures	40	24OCT11A	28OCT11A	26MAR12		100																																				
8200-0027	Perform bay by bay catalogue and label Mech	20	01NOV11A	16NOV11A	30JAN12		100																																				
8200-0030A	Write Electrical CHERS-FIDA Procedures	32*	01NOV11A	20DEC11A	26MAR12		100																																				
8200-0030C	Write Electrical MSE-LIF Bay G Procedures	15	01NOV11A	18NOV11A	26MAR12		100																																				
8200-0026C	Gen Arrangement Dwgs Input to CAD Group	505*	14DEC11A	02JAN14	08NOV12	175	60	Gen Arrangement Dwgs Input to CAD Group																																			
8200-0030B	Write Electrical MSE Bay B Procedures	20	03JAN12A	25JAN12A	26MAR12		100																																				
8200-0030F	Write Electrical General Procedures	65	22JAN13	22APR13	26MAR12	251	0	Write Electrical General Procedures																																			
Removals (non NB related)																																											
Installation																																											
8200-0029A	N/A Blow Out Hoses (X-90)	1	03OCT11A	07OCT11A	30NOV11A		100																																				
8200-0029B	Lower Hoses Relocate	3	03OCT11A	05OCT11A	23JAN12		100																																				
8200-0034B	N/A Lower Cat 2 Tray Remove & Store Elect (X-90)	71	03OCT11A	13OCT11A	30NOV11A		100																																				
8200-0034A	N/A Remove Lower Flex Joints (X-90)	5	05OCT11A	10OCT11A	30NOV11A		100																																				
8200-0048B	N/A Remove Upper Flex Joints (X-90)	5	05OCT11A	12OCT11A	30NOV11A		100																																				
8200-0029	Remove RF pipes	8*	10OCT11A	19OCT11A	18JAN12		100																																				
8200-0048	N/A Umbrella Lid Remove existing (X-90)	2	10OCT11A	13OCT11A	30NOV11A		100																																				
8200-0039	Remove insulation	5	24OCT11A	28OCT11A	24OCT11		100																																				
8200-0040	Remove Gas Injection System	5	24OCT11A	28OCT11A	24OCT11		100																																				
8200-0031	Pull Back Cable from Upper Tray	24*	01NOV11A	28NOV11A	05MAR12		100																																				
8200-0033	Remove and store Midplane Mech	110	01NOV11A	18JAN12A	27APR12		100																																				
8200-0034	Remove and store Upper port eqpt	51	01NOV11A	20JAN12A	15DEC11		100																																				
8200-0034D	Remove and store lower port eqpt	51	01NOV11A	20JAN12A	28MAR12		100																																				
8200-0032	Upper Tray remove and store Elect	29*	08NOV11A	20DEC11A	19MAR12		100																																				
8200-0028D	Fabricate Crates & Setup Areas for Storage	20	11NOV11A	16NOV11A	04JAN12		100																																				
8200-0043	Clear Bay G platform & area remove bad TF-MECH	145*	16NOV11A	31MAY12A	21MAR12		100																																				
8200-0043C	Clear Bay G platform & area to remove bad TF-ELE	144*	16NOV11A	12MAR12A			100																																				
8200-0033B	Perform Electrical MSE-LIF Bay G Procedures	10	01DEC11A	13DEC11A	26MAR12		100																																				
8200-0034E	Perform Electrical CHERS Procedures	14	01DEC11A	20DEC11A	06APR12		100																																				
8200-0033A	Perform Electrical MSE Bay B Procedures	10	16JAN12A	31JAN12A	17APR12		100																																				
8200-0043A	Electrical Removal for TF7 Removal	60*	23JAN12A	22MAR12A	16MAY12		100																																				

Activity ID	Activity Description	Work Days	Forecast Start	Forecast Finish	BL FINISH	Total Float	% Comp	FY13												FY14												FY15														
								S	O	N	D	J	F	M	A	M	J	J	A	S	S	O	N	D	J	F	M	A	M	J	J	A	S	S	O	N	D	J	F	M	A	M	J	J	A	S
8200-J260	TF LOWER Align and match drill new Ring Splice	1	21MAR13	21MAR13	13AUG13	193	0													TF LOWER Align and match drill new Ring Splice																										
8200-J270	TF LOWER Install and torque all bolts	1	22MAR13	22MAR13	14AUG13	193	0													TF LOWER Install and torque all bolts																										
8200-J290	Fiber & electrical Reinstallation	20	25MAR13	19APR13	12SEP13	193	0													Fiber & electrical Reinstallation																										
Midplane Bay K																																														
Installation																																														
8200-K120	TF Verify Datums & Remove turnbuckles	15	12MAR12A	29MAR12A	06JUN12		100																																							
8200-K130	PF5 U&L Remove existing midplane columns	24	31OCT12	05DEC12	07JUN12	283	0													PF5 U&L Remove existing midplane columns																										
UPPER																																														
8200-K360	TF UPPER Remove/Grind Existing clevis bolts	1	23MAR12A	28MAR12A	12JUN12		100																																							
8200-K480	PF5 UPPER Cut off Clevis Support	1	23MAR12A	28MAR12A	08JUN12		100																																							
8200-K370	TF UPPER weld New clevis	1	27AUG12A	27AUG12A	25MAR13		100																																							
8200-K490	PF5 UPPER weld Studs Support	48	31OCT12	17JAN13	11JUN12	106	0													PF5 UPPER weld Studs Support																										
8200-K390	PF 4&5 UPPER Install New interstitial Clamps	2	18JAN13	21JAN13	27MAR13	170	0													PF 4&5 UPPER Install New interstitial Clamps																										
8200-K500	PF4, 5 UPPER Replace Existing Bolts	1	22FEB13	22FEB13	04APR13	170	0													PF4, 5 UPPER Replace Existing Bolts																										
8200-K380	TF UPPER Install 2 new TF clamp	4	25FEB13	28FEB13	10APR13	170	0													TF UPPER Install 2 new TF clamp																										
8200-K400	TF UPPER Install Vessel Ties & Align	1	01MAR13	01MAR13	11APR13	170	0													TF UPPER Install Vessel Ties & Align																										
8200-K410	TF UPPER Install New Ring Weldment	1	04MAR13	04MAR13	12APR13	170	0													TF UPPER Install New Ring Weldment																										
8200-K420	TF UPPER Measure New Ring Splice	1	05MAR13	05MAR13	15APR13	170	0													TF UPPER Measure New Ring Splice																										
8200-K430	TF UPPER Machine New Ring Splice	2	06MAR13	07MAR13	17APR13	170	0													TF UPPER Machine New Ring Splice																										
8200-K440	TF UPPER Weld New Ring Splice	1	08MAR13	08MAR13	18APR13	170	0													TF UPPER Weld New Ring Splice																										
8200-K450	TF UPPER Align and match drill new Ring Splice	1	11MAR13	11MAR13	19APR13	170	0													TF UPPER Align and match drill new Ring Splice																										
8200-K460	TF UPPER Measur/Machine/Instal New Ring Weldment	5	12MAR13	18MAR13	26APR13	170	0													TF UPPER Measur/Machine/Instal New Ring Weldment																										
8200-K470	TF UPPER Install and torque all bolts	1	19MAR13	19MAR13	29APR13	170	0													TF UPPER Install and torque all bolts																										
LOWER																																														
8200-K170	TF LOWER Remove/Grind Existing clevis bolts	1	16APR12A	30APR12A	02MAY13		100																																							
8200-K210	PF5 LOWER Cut off Clevis Support	1	25MAY12A	31MAY12A	30APR13		100																																							
8200-K220	PF5 LOWER Weld Studs Support	1	20MAR13	20MAR13	01MAY13	170	0													PF5 LOWER Weld Studs Support																										
8200-K330	TF Lower Weld New clevis	1	21MAR13	21MAR13	03MAY13	170	0													TF Lower Weld New clevis																										
8200-K150	PF 4&5 LOWER Install New interstitial Clamps	1	22MAR13	22MAR13	06MAY13	170	0													PF 4&5 LOWER Install New interstitial Clamps																										
8200-K160	PF 5 U&L Install New Columns DC 1568	2	25MAR13	26MAR13	08MAY13	170	0													PF 5 U&L Install New Columns DC 1568																										
8200-K310	PF 4&5 LOWER Replace Existing Bolts	1	27MAR13	27MAR13	09MAY13	170	0													PF 4&5 LOWER Replace Existing Bolts																										
8200-K320	PF5 U&L Replace Existing Column with New	2	28MAR13	29MAR13	13MAY13	170	0													PF5 U&L Replace Existing Column with New																										
8200-K340	PF5 U&L Shim Measur/Machine/Instal New Column	5	01APR13	05APR13	20MAY13	170	0													PF5 U&L Shim Measur/Machine/Instal New Column																										
8200-K300	PF4&5 U&L Torque all bolts	1	08APR13	08APR13	21MAY13	170	0													PF4&5 U&L Torque all bolts																										
8200-K230	TF LOWER Install 2 new TF clamps	4	09APR13	12APR13	28MAY13	170	0													TF LOWER Install 2 new TF clamps																										
8200-K240	TF LOWER Install Vessel ties & Align	1	15APR13	15APR13	29MAY13	170	0													TF LOWER Install Vessel ties & Align																										
8200-K250	TF LOWER Install new ring weldment	1	16APR13	16APR13	30MAY13	170	0													TF LOWER Install new ring weldment																										
8200-K180	TF LOWER Measure New Ring Splice	1	17APR13	17APR13	31MAY13	170	0													TF LOWER Measure New Ring Splice																										
8200-K190	TF LOWER Machine New Ring Splice	2	18APR13	19APR13	04JUN13	170	0													TF LOWER Machine New Ring Splice																										
8200-K200	TF LOWER Weld New Ring Splice	1	22APR13	22APR13	05JUN13	170	0													TF LOWER Weld New Ring Splice																										

Activity ID	Activity Description	Work Days	Forecast Start	Forecast Finish	BL FINISH	Total Float	% Comp	FY13												FY14												FY15														
								S	O	N	D	J	F	M	A	M	J	J	A	S	S	O	N	D	J	F	M	A	M	J	J	A	S	S	O	N	D	J	F	M	A	M	J	J	A	S
8200-L260	TF LOWER Align and match drill new Ring Splice	1	11APR13	11APR13	06JUN13	106	0													TF LOWER Align and match drill new Ring Splice																										
8200-L270	TF LOWER Install and torque all bolts	1	12APR13	12APR13	07JUN13	106	0													TF LOWER Install and torque all bolts																										
8200-L290	Fiber & electrical Reinstallation	20	15APR13	10MAY13	09JUL13	106	0													Fiber & electrical Reinstallation																										
Midplane Bay D																																														
Installation																																														
8200-D120	TF Verify Datums & Remove turnbuckles	15	12MAR12A	22MAR12A	26SEP12		100																																							
8200-D130	PF5 U&L Remove existing midplane columns	24	31OCT12	05DEC12	27SEP12	283	0													PF5 U&L Remove existing midplane columns																										
UPPER																																														
8200-D480	PF5 UPPER Cut off Clevis Support	1	23MAR12A	28MAR12A	28SEP12		100																																							
8200-D360	TF UPPER Remove/Grind Existing clevis bolts	35*	16APR12A	30APR12A	28MAY13		100																																							
8200-D370	TF UPPER weld New clevis	1	25JUN12A	25JUN12A	29MAY13		100																																							
8200-D490	PF5 UPPER weld Studs Support	48	31OCT12	17JAN13	24MAY13	106	0													PF5 UPPER weld Studs Support																										
8200-D390	PF 4&5 UPPER Install New interstitial Clamps	2	18JAN13	21JAN13	31MAY13	194	0													PF 4&5 UPPER Install New interstitial Clamps																										
8200-D500	PF4, 5 UPPER Replace Existing Bolts	1	22JAN13	22JAN13	10JUN13	194	0													PF4, 5 UPPER Replace Existing Bolts																										
8200-D380	TF UPPER Install 2 new TF clamp	4	23JAN13	28JAN13	14JUN13	194	0													TF UPPER Install 2 new TF clamp																										
8200-D400	TF UPPER Install Vessel Ties & Align	1	29JAN13	29JAN13	17JUN13	194	0													TF UPPER Install Vessel Ties & Align																										
8200-D410	TF UPPER Install New Ring Weldment	1	30JAN13	30JAN13	18JUN13	194	0													TF UPPER Install New Ring Weldment																										
8200-D420	TF UPPER Measure New Ring Splice	1	31JAN13	31JAN13	19JUN13	194	0													TF UPPER Measure New Ring Splice																										
8200-D430	TF UPPER Machine New Ring Splice	2	01FEB13	04FEB13	21JUN13	194	0													TF UPPER Machine New Ring Splice																										
8200-D440	TF UPPER Weld New Ring Splice	1	05FEB13	05FEB13	24JUN13	194	0													TF UPPER Weld New Ring Splice																										
8200-D450	TF UPPER Align and match drill new Ring Splice	1	06FEB13	06FEB13	25JUN13	194	0													TF UPPER Align and match drill new Ring Splice																										
8200-D460	TF UPPER Measur/Machine/Instal New Ring Weldment	5	07FEB13	13FEB13	02JUL13	194	0													TF UPPER Measur/Machine/Instal New Ring Weldment																										
8200-D470	TF UPPER Install and torque all bolts	1	14FEB13	14FEB13	03JUL13	194	0													TF UPPER Install and torque all bolts																										
LOWER																																														
8200-D170	TF LOWER Remove/Grind Existing clevis bolts	1	16APR12A	30APR12A	10JUL13		100																																							
8200-D210	PF5 LOWER Cut off Clevis Support	1	25MAY12A	31MAY12A	08JUL13		100																																							
8200-D330	TF Lower Weld New clevis	1	23JUL12A	31JUL12A	11JUL13		100																																							
8200-D220	PF5 LOWER Weld Studs Support	1	15FEB13	15FEB13	09JUL13	194	0													PF5 LOWER Weld Studs Support																										
8200-D150	PF 4&5 LOWER Install New interstitial Clamps	1	18FEB13	18FEB13	12JUL13	194	0													PF 4&5 LOWER Install New interstitial Clamps																										
8200-D160	PF5 U&L Install New Columns DC 1568	2	19FEB13	20FEB13	16JUL13	194	0													PF5 U&L Install New Columns DC 1568																										
8200-D310	PF 4&5 LOWER Replace Existing Bolts	1	21FEB13	21FEB13	17JUL13	194	0													PF 4&5 LOWER Replace Existing Bolts																										
8200-D320	PF5 U&L Replace Existing Column with New	2	22FEB13	25FEB13	19JUL13	194	0													PF5 U&L Replace Existing Column with New																										
8200-D340	PF5 U&L Shim Measur/Machine/Instal New Column	5	26FEB13	04MAR13	26JUL13	194	0													PF5 U&L Shim Measur/Machine/Instal New Column																										
8200-D300	PF4&5 U&L Torque all bolts	1	05MAR13	05MAR13	29JUL13	194	0													PF4&5 U&L Torque all bolts																										
8200-D230	TF LOWER Install 2 new TF clamps	4	06MAR13	11MAR13	02AUG13	194	0													TF LOWER Install 2 new TF clamps																										
8200-D240	TF LOWER Install Vessel ties & Align	1	12MAR13	12MAR13	05AUG13	194	0													TF LOWER Install Vessel ties & Align																										
8200-D250	TF LOWER Install new ring weldment	1	13MAR13	13MAR13	06AUG13	194	0													TF LOWER Install new ring weldment																										
8200-D180	TF LOWER Measure New Ring Splice	1	14MAR13	14MAR13	07AUG13	194	0													TF LOWER Measure New Ring Splice																										
8200-D190	TF LOWER Machine New Ring Splice	2	15MAR13	18MAR13	09AUG13	194	0													TF LOWER Machine New Ring Splice																										
8200-D200	TF LOWER Weld New Ring Splice	1	19MAR13	19MAR13	12AUG13	194	0													TF LOWER Weld New Ring Splice																										

Activity ID	Activity Description	Work Days	Forecast Start	Forecast Finish	BL FINISH	Total Float	% Comp	FY13												FY14												FY15														
								S	O	N	D	J	F	M	A	M	J	J	A	S	S	O	N	D	J	F	M	A	M	J	J	A	S	S	O	N	D	J	F	M	A	M	J	J	A	S
8200-D260	TF LOWER Align and match drill new Ring Splice	1	20MAR13	20MAR13	13AUG13	194	0																																							
8200-D270	TF LOWER Install and torque all bolts	1	21MAR13	21MAR13	14AUG13	194	0																																							
8200-D290	Fiber & electrical Reinstallation	20	22MAR13	18APR13	12SEP13	194	0																																							
Midplane Bay E																																														
Installation																																														
8200-E120	TF Verify Datums & Remove turnbuckles	15	12MAR12A	22MAR12A	17OCT12		100																																							
8200-E130	PF5 U&L Remove existing midplane columns	24	31OCT12	05DEC12	18OCT12	268	0																																							
UPPER																																														
8200-E480	PF5 UPPER Cut off Clevis Support	1	23MAR12A	28MAR12A	19OCT12		100																																							
8200-E360	TF UPPER Remove/Grind Existing clevis bolts	1	23APR12A	30APR12A	23OCT12		100																																							
8200-E370	TF UPPER weld New clevis	1	27AUG12A	31AUG12A	25MAR13		100																																							
8200-E490	PF5 UPPER weld Studs Support	48	31OCT12	17JAN13	22OCT12	194	0																																							
8200-E390	PF 4&5 UPPER Install New interstitial Clamps	2	18JAN13	21JAN13	27MAR13	194	0																																							
8200-E500	PF4, 5 UPPER Replace Existing Bolts	1	22JAN13	22JAN13	04APR13	194	0																																							
8200-E380	TF UPPER Install 2 new TF clamp	4	23JAN13	28JAN13	10APR13	194	0																																							
8200-E400	TF UPPER Install Vessel Ties & Align	1	29JAN13	29JAN13	11APR13	194	0																																							
8200-E410	TF UPPER Install New Ring Weldment	1	30JAN13	30JAN13	12APR13	194	0																																							
8200-E420	TF UPPER Measure New Ring Splice	1	31JAN13	31JAN13	15APR13	194	0																																							
8200-E430	TF UPPER Machine New Ring Splice	2	01FEB13	04FEB13	17APR13	194	0																																							
8200-E440	TF UPPER Weld New Ring Splice	1	05FEB13	05FEB13	18APR13	194	0																																							
8200-E450	TF UPPER Align and match drill new Ring Splice	1	06FEB13	06FEB13	19APR13	194	0																																							
8200-E460	TF UPPER Measur/Machine/Instal New Ring Weldment	5	07FEB13	13FEB13	26APR13	194	0																																							
8200-E470	TF UPPER Install and torque all bolts	1	14FEB13	14FEB13	29APR13	194	0																																							
LOWER																																														
8200-E170	TF LOWER Remove/Grind Existing clevis bolts	58*	16APR12A	31MAY12A	02MAY13		100																																							
8200-E210	PF5 LOWER Cut off Clevis Support	1	25MAY12A	31MAY12A	30APR13		100																																							
8200-E330	TF Lower Weld New clevis	1	23JUL12A	31JUL12A	03MAY13		100																																							
8200-E220	PF5 LOWER Weld Studs Support	1	15FEB13	15FEB13	01MAY13	194	0																																							
8200-E150	PF 4&5 LOWER Install New interstitial Clamps	1	18FEB13	18FEB13	06MAY13	194	0																																							
8200-E160	PF5 U&L Install New Columns DC 1568	2	19FEB13	20FEB13	08MAY13	194	0																																							
8200-E310	PF 4&5 LOWER Replace Existing Bolts	1	21FEB13	21FEB13	09MAY13	194	0																																							
8200-E320	PF5 U&L Replace Existing Column with New	2	22FEB13	25FEB13	13MAY13	194	0																																							
8200-E340	PF5 U&L Shim Measur/Machine/Instal New Column	5	26FEB13	04MAR13	20MAY13	194	0																																							
8200-E300	PF4&5 U&L Torque all bolts	1	05MAR13	05MAR13	21MAY13	194	0																																							
8200-E230	TF LOWER Install 2 new TF clamps	4	06MAR13	11MAR13	28MAY13	194	0																																							
8200-E240	TF LOWER Install Vessel ties & Align	1	12MAR13	12MAR13	29MAY13	194	0																																							
8200-E250	TF LOWER Install new ring weldment	1	13MAR13	13MAR13	30MAY13	194	0																																							
8200-E180	TF LOWER Measure New Ring Splice	1	14MAR13	14MAR13	31MAY13	194	0																																							
8200-E190	TF LOWER Machine New Ring Splice	2	15MAR13	18MAR13	04JUN13	194	0																																							
8200-E200	TF LOWER Weld New Ring Splice	1	19MAR13	19MAR13	05JUN13	194	0																																							

Activity ID	Activity Description	Work Days	Forecast Start	Forecast Finish	BL FINISH	Total Float	% Comp	FY13												FY14												FY15														
								S	O	N	D	J	F	M	A	M	J	J	A	S	S	O	N	D	J	F	M	A	M	J	J	A	S	S	O	N	D	J	F	M	A	M	J	J	A	S
8200-G260	TF LOWER Align and match drill new Ring Splice	1	25JUN13	25JUN13	18MAR13	126	0	TF LOWER Align and match drill new Ring Splice																																						
8200-G270	TF LOWER Install and torque all bolts	1	26JUN13	26JUN13	19MAR13	126	0	TF LOWER Install and torque all bolts																																						
8200-G290	Fiber & electrical Reinstallation	20	27JUN13	26JUL13	16APR13	126	0	Fiber & electrical Reinstallation																																						
Midplane Bay B																																														
Installation																																														
8200-H120	TF Verify Datums & Remove turnbuckles	1	25JUN12A	25JUN12A	25JAN13		100	TF Verify Datums & Remove turnbuckles																																						
8200-H130	PF5 U&L Remove existing midplane columns	1	22APR13	22APR13	28JAN13	125	0	PF5 U&L Remove existing midplane columns																																						
UPPER																																														
8200-H360	TF UPPER Remove/Grind Existing clevis bolts	1	16APR12A	30APR12A	31JAN13		100	TF UPPER Remove/Grind Existing clevis bolts																																						
8200-H480	PF5 UPPER Cut off Clevis Support	1	25JUN12A	25JUN12A	29JAN13		100	PF5 UPPER Cut off Clevis Support																																						
8200-H370	TF UPPER weld New clevis	1	27AUG12A	27AUG12A	01FEB13		100	TF UPPER weld New clevis																																						
8200-H490	PF5 UPPER weld Studs Support	1	23APR13	23APR13	30JAN13	125	0	PF5 UPPER weld Studs Support																																						
8200-H390	PF 4&5 UPPER Install New interstitial Clamps	2	24APR13	25APR13	05FEB13	125	0	PF 4&5 UPPER Install New interstitial Clamps																																						
8200-H500	PF4, 5 UPPER Replace Existing Bolts	1	26APR13	26APR13	13FEB13	125	0	PF4, 5 UPPER Replace Existing Bolts																																						
8200-H380	TF UPPER Install 2 new TF clamp	4	29APR13	02MAY13	19FEB13	125	0	TF UPPER Install 2 new TF clamp																																						
8200-H400	TF UPPER Install Vessel Ties & Align	1	03MAY13	03MAY13	20FEB13	125	0	TF UPPER Install Vessel Ties & Align																																						
8200-H410	TF UPPER Install New Ring Weldment	1	06MAY13	06MAY13	21FEB13	125	0	TF UPPER Install New Ring Weldment																																						
8200-H420	TF UPPER Measure New Ring Splice	1	07MAY13	07MAY13	22FEB13	125	0	TF UPPER Measure New Ring Splice																																						
8200-H430	TF UPPER Machine New Ring Splice	2	08MAY13	09MAY13	26FEB13	125	0	TF UPPER Machine New Ring Splice																																						
8200-H440	TF UPPER Weld New Ring Splice	1	10MAY13	10MAY13	27FEB13	125	0	TF UPPER Weld New Ring Splice																																						
8200-H450	TF UPPER Align and match drill new Ring Splice	1	13MAY13	13MAY13	28FEB13	125	0	TF UPPER Align and match drill new Ring Splice																																						
8200-H460	TF UPPER Measur/Machine/Instal New Ring Weldment	5	14MAY13	20MAY13	07MAR13	125	0	TF UPPER Measur/Machine/Instal New Ring Weldment																																						
8200-H470	TF UPPER Install and torque all bolts	1	21MAY13	21MAY13	08MAR13	125	0	TF UPPER Install and torque all bolts																																						
LOWER																																														
8200-H170	TF LOWER Remove/Grind Existing clevis bolts	1	02JUL12A	02JUL12A	13MAR13		100	TF LOWER Remove/Grind Existing clevis bolts																																						
8200-H330	TF Lower Weld New clevis	1	23JUL12A	31JUL12A	14MAR13		100	TF Lower Weld New clevis																																						
8200-H210	PF5 LOWER Cut off Clevis Support	1	22MAY13	22MAY13	11MAR13	125	0	PF5 LOWER Cut off Clevis Support																																						
8200-H220	PF5 LOWER Weld Studs Support	1	23MAY13	23MAY13	12MAR13	125	0	PF5 LOWER Weld Studs Support																																						
8200-H150	PF 4&5 LOWER Install New interstitial Clamps	1	24MAY13	24MAY13	15MAR13	125	0	PF 4&5 LOWER Install New interstitial Clamps																																						
8200-H160	PF5 U&L Install New Columns DC 1568	2	28MAY13	29MAY13	19MAR13	125	0	PF5 U&L Install New Columns DC 1568																																						
8200-H310	PF 4&5 LOWER Replace Existing Bolts	1	30MAY13	30MAY13	20MAR13	125	0	PF 4&5 LOWER Replace Existing Bolts																																						
8200-H320	PF5 U&L Replace Existing Column with New	2	31MAY13	03JUN13	22MAR13	125	0	PF5 U&L Replace Existing Column with New																																						
8200-H340	PF5 U&L Shim Measur/Machine/Instal New Column	5	04JUN13	10JUN13	29MAR13	125	0	PF5 U&L Shim Measur/Machine/Instal New Column																																						
8200-H300	PF4&5 U&L Torque all bolts	1	11JUN13	11JUN13	01APR13	125	0	PF4&5 U&L Torque all bolts																																						
8200-H230	TF LOWER Install 2 new TF clamps	4	12JUN13	17JUN13	05APR13	125	0	TF LOWER Install 2 new TF clamps																																						
8200-H240	TF LOWER Install Vessel ties & Align	1	18JUN13	18JUN13	08APR13	125	0	TF LOWER Install Vessel ties & Align																																						
8200-H250	TF LOWER Install new ring weldment	1	19JUN13	19JUN13	09APR13	125	0	TF LOWER Install new ring weldment																																						
8200-H180	TF LOWER Measure New Ring Splice	1	20JUN13	20JUN13	10APR13	125	0	TF LOWER Measure New Ring Splice																																						
8200-H190	TF LOWER Machine New Ring Splice	2	21JUN13	24JUN13	12APR13	125	0	TF LOWER Machine New Ring Splice																																						
8200-H200	TF LOWER Weld New Ring Splice	1	25JUN13	25JUN13	15APR13	125	0	TF LOWER Weld New Ring Splice																																						

Activity ID	Activity Description	Work Days	Forecast Start	Forecast Finish	BL FINISH	Total Float	% Comp	FY13												FY14												FY15											
								S	O	N	D	J	F	M	A	M	J	J	A	S	S	O	N	D	J	F	M	A	M	J	J	A	S	S	O	N	D	J	F	M	A	M	J
8200-I260	TF LOWER Align and match drill new Ring Splice	1	28JUN13	28JUN13	16MAY13	123	0																																				
8200-I270	TF LOWER Install and torque all bolts	1	01JUL13	01JUL13	17MAY13	123	0																																				
8200-I290	Fiber & electrical Reinstallation	20	02JUL13	31JUL13	17JUN13	123	0																																				
Midplane Bay G																																											
Installation																																											
8200-0052	TF Verify Datums & Remove turnbuckles	15	19MAR12A	28MAR12A	20MAY13		100																																				
8200-0069	PF5 U&L Remove existing midplane columns	1	13MAY13	13MAY13	21MAY13	106	0	PF5 U&L Remove existing midplane columns																																			
UPPER																																											
8200-0069A	PF5 UPPER Cut off Clevis Support	1	23MAR12A	28MAR12A	22MAY13		100																																				
8200-0052A	TF UPPER Remove/Grind Existing clevis bolts	1	16APR12A	30APR12A	24MAY13		100																																				
8200-0052B	TF UPPER weld New clevis	1	23JUL12A	31JUL12A	28MAY13		100																																				
8200-0069B	PF5 UPPER weld Studs Support	1	14MAY13	14MAY13	23MAY13	106	0	PF5 UPPER weld Studs Support																																			
8200-0052D	PF 4&5 UPPER Install New interstitial Clamps	2	15MAY13	16MAY13	30MAY13	106	0	PF 4&5 UPPER Install New interstitial Clamps																																			
8200-0071	PF4, 5 UPPER Replace Existing Bolts	1	17MAY13	17MAY13	07JUN13	106	0	PF4, 5 UPPER Replace Existing Bolts																																			
8200-0052C	TF UPPER Install 2 new TF clamp	4	20MAY13	23MAY13	13JUN13	106	0	TF UPPER Install 2 new TF clamp																																			
8200-0053	TF UPPER Install Vessel Ties & Align	1	24MAY13	24MAY13	14JUN13	106	0	TF UPPER Install Vessel Ties & Align																																			
8200-0054	TF UPPER Install New Ring Weldment	1	28MAY13	28MAY13	17JUN13	106	0	TF UPPER Install New Ring Weldment																																			
8200-0055	TF UPPER Measure New Ring Splice	1	29MAY13	29MAY13	18JUN13	106	0	TF UPPER Measure New Ring Splice																																			
8200-0055A	TF UPPER Machine New Ring Splice	2	30MAY13	31MAY13	20JUN13	106	0	TF UPPER Machine New Ring Splice																																			
8200-0055B	TF UPPER Weld New Ring Splice	1	03JUN13	03JUN13	21JUN13	106	0	TF UPPER Weld New Ring Splice																																			
8200-0056	TF UPPER Align and match drill new Ring Splice	1	04JUN13	04JUN13	24JUN13	106	0	TF UPPER Align and match drill new Ring Splice																																			
8200-0056A	TF UPPER Measur/Machine/Instal New Ring Weldment	5	05JUN13	11JUN13	01JUL13	106	0	TF UPPER Measur/Machine/Instal New Ring Weldment																																			
8200-0057	TF UPPER Install and torque all bolts	1	12JUN13	12JUN13	02JUL13	106	0	TF UPPER Install and torque all bolts																																			
LOWER																																											
8200-0052I	TF LOWER Remove/Grind Existing clevis bolts	1	23JUL12A	31JUL12A	09JUL13		100																																				
8200-0057A	PF5 LOWER Cut off Clevis Support	1	13JUN13	13JUN13	03JUL13	106	0	PF5 LOWER Cut off Clevis Support																																			
8200-0057B	PF5 LOWER Weld Studs Support	1	14JUN13	14JUN13	08JUL13	106	0	PF5 LOWER Weld Studs Support																																			
8200-0095A	TF Lower Weld New clevis	1	17JUN13	17JUN13	10JUL13	106	0	TF Lower Weld New clevis																																			
8200-0052G	PF 4&5 LOWER Install New interstitial Clamps	1	18JUN13	18JUN13	11JUL13	106	0	PF 4&5 LOWER Install New interstitial Clamps																																			
8200-0052H	PF5 U&L Install New Columns DC 1568	2	19JUN13	20JUN13	15JUL13	106	0	PF5 U&L Install New Columns DC 1568																																			
8200-0094	PF 4&5 LOWER Replace Existing Bolts	1	21JUN13	21JUN13	16JUL13	106	0	PF 4&5 LOWER Replace Existing Bolts																																			
8200-0095	PF5 U&L Replace Existing Column with New	2	24JUN13	25JUN13	18JUL13	106	0	PF5 U&L Replace Existing Column with New																																			
8200-0095C	PF5 U&L Shim Measur/Machine/Instal New Column	5	26JUN13	02JUL13	25JUL13	106	0	PF5 U&L Shim Measur/Machine/Instal New Column																																			
8200-0093	PF4&5 U&L Torque all bolts	1	03JUL13	03JUL13	26JUL13	106	0	PF4&5 U&L Torque all bolts																																			
8200-0077	TF LOWER Install 2 new TF clamps	4	08JUL13	11JUL13	01AUG13	106	0	TF LOWER Install 2 new TF clamps																																			
8200-0078	TF LOWER Install Vessel ties & Align	1	12JUL13	12JUL13	02AUG13	106	0	TF LOWER Install Vessel ties & Align																																			
8200-0079	TF LOWER Install new ring weldment	1	15JUL13	15JUL13	05AUG13	106	0	TF LOWER Install new ring weldment																																			
8200-0055F	TF LOWER Measure New Ring Splice	1	16JUL13	16JUL13	06AUG13	106	0	TF LOWER Measure New Ring Splice																																			
8200-0055G	TF LOWER Machine New Ring Splice	2	17JUL13	18JUL13	08AUG13	106	0	TF LOWER Machine New Ring Splice																																			
8200-0055H	TF LOWER Weld New Ring Splice	1	19JUL13	19JUL13	09AUG13	106	0	TF LOWER Weld New Ring Splice																																			

Activity ID	Activity Description	Work Days	Forecast Start	Forecast Finish	BL FINISH	Total Float	% Comp	FY13												FY14												FY15														
								S	O	N	D	J	F	M	A	M	J	J	A	S	S	O	N	D	J	F	M	A	M	J	J	A	S	S	O	N	D	J	F	M	A	M	J	J	A	S
8200-0080	TF LOWER Align and match drill new Ring Splice	1	22JUL13	22JUL13	12AUG13	106	0	TF LOWER Align and match drill new Ring Splice																																						
8200-0081	TF LOWER Install and torque all bolts	1	23JUL13	23JUL13	13AUG13	106	0	TF LOWER Install and torque all bolts																																						
8200-0081B	Fiber & electrical Reinstallation	20	24JUL13	20AUG13	11SEP13	106	0	Fiber & electrical Reinstallation																																						
Midplane Bay H																																														
Installation																																														
8200-B120	TF Verify Datums & Remove turnbuckles	1	23MAR12A	28MAR12A	18JUN13		100																																							
8200-B130	PF5 U&L Remove existing midplane columns	1	13MAY13	13MAY13	19JUN13	111	0	PF5 U&L Remove existing midplane columns																																						
UPPER																																														
8200-B360	TF UPPER Remove/Grind Existing clevis bolts	1	23MAR12A	28MAR12A	24JUN13		100																																							
8200-B480	PF5 UPPER Cut off Clevis Support	1	23MAR12A	28MAR12A	20JUN13		100																																							
8200-B370	TF UPPER weld New clevis	1	25JUN12A	25JUN12A	25JUN13		100																																							
8200-B490	PF5 UPPER weld Studs Support	1	14MAY13	14MAY13	21JUN13	111	0	PF5 UPPER weld Studs Support																																						
8200-B390	PF 4&5 UPPER Install New interstitial Clamps	2	15MAY13	16MAY13	27JUN13	111	0	PF 4&5 UPPER Install New interstitial Clamps																																						
8200-B500	PF4, 5 UPPER Replace Existing Bolts	1	17MAY13	17MAY13	09JUL13	111	0	PF4, 5 UPPER Replace Existing Bolts																																						
8200-B380	TF UPPER Install 2 new TF clamp	4	20MAY13	23MAY13	15JUL13	111	0	TF UPPER Install 2 new TF clamp																																						
8200-B400	TF UPPER Install Vessel Ties & Align	1	24MAY13	24MAY13	16JUL13	111	0	TF UPPER Install Vessel Ties & Align																																						
8200-B410	TF UPPER Install New Ring Weldment	1	28MAY13	28MAY13	17JUL13	111	0	TF UPPER Install New Ring Weldment																																						
8200-B420	TF UPPER Measure New Ring Splice	1	29MAY13	29MAY13	18JUL13	111	0	TF UPPER Measure New Ring Splice																																						
8200-B430	TF UPPER Machine New Ring Splice	2	30MAY13	31MAY13	22JUL13	111	0	TF UPPER Machine New Ring Splice																																						
8200-B440	TF UPPER Weld New Ring Splice	1	03JUN13	03JUN13	23JUL13	111	0	TF UPPER Weld New Ring Splice																																						
8200-B450	TF UPPER Align and match drill new Ring Splice	1	04JUN13	04JUN13	24JUL13	111	0	TF UPPER Align and match drill new Ring Splice																																						
8200-B460	TF UPPER Measur/Machine/Instal New Ring Weldment	5	05JUN13	11JUN13	31JUL13	111	0	TF UPPER Measur/Machine/Instal New Ring Weldment																																						
8200-B470	TF UPPER Install and torque all bolts	1	12JUN13	12JUN13	01AUG13	111	0	TF UPPER Install and torque all bolts																																						
LOWER																																														
8200-B170	TF LOWER Remove/Grind Existing clevis bolts	1	25MAY12A	31MAY12A	06AUG13		100																																							
8200-B210	PF5 LOWER Cut off Clevis Support	1	25MAY12A	31MAY12A	02AUG13		100																																							
8200-B330	TF Lower Weld New clevis	1	23JUL12A	31JUL12A	07AUG13		100																																							
8200-B220	PF5 LOWER Weld Studs Support	1	13JUN13	13JUN13	05AUG13	111	0	PF5 LOWER Weld Studs Support																																						
8200-B150	PF 4&5 LOWER Install New interstitial Clamps	1	14JUN13	14JUN13	08AUG13	111	0	PF 4&5 LOWER Install New interstitial Clamps																																						
8200-B160	PF5 U&L Install New Columns DC 1568	2	17JUN13	18JUN13	12AUG13	111	0	PF5 U&L Install New Columns DC 1568																																						
8200-B310	PF 4&5 LOWER Replace Existing Bolts	1	19JUN13	19JUN13	13AUG13	111	0	PF 4&5 LOWER Replace Existing Bolts																																						
8200-B320	PF5 U&L Replace Existing Column with New	2	20JUN13	21JUN13	15AUG13	111	0	PF5 U&L Replace Existing Column with New																																						
8200-B340	PF5 U&L Shim Measur/Machine/Instal New Column	5	24JUN13	28JUN13	22AUG13	111	0	PF5 U&L Shim Measur/Machine/Instal New Column																																						
8200-B300	PF4&5 U&L Torque all bolts	1	01JUL13	01JUL13	23AUG13	111	0	PF4&5 U&L Torque all bolts																																						
8200-B230	TF LOWER Install 2 new TF clamps	4	02JUL13	09JUL13	29AUG13	111	0	TF LOWER Install 2 new TF clamps																																						
8200-B240	TF LOWER Install Vessel ties & Align	1	10JUL13	10JUL13	30AUG13	111	0	TF LOWER Install Vessel ties & Align																																						
8200-B250	TF LOWER Install new ring weldment	1	11JUL13	11JUL13	03SEP13	111	0	TF LOWER Install new ring weldment																																						
8200-B180	TF LOWER Measure New Ring Splice	1	12JUL13	12JUL13	04SEP13	111	0	TF LOWER Measure New Ring Splice																																						
8200-B190	TF LOWER Machine New Ring Splice	2	15JUL13	16JUL13	06SEP13	111	0	TF LOWER Machine New Ring Splice																																						
8200-B200	TF LOWER Weld New Ring Splice	1	17JUL13	17JUL13	09SEP13	111	0	TF LOWER Weld New Ring Splice																																						

Activity ID	Activity Description	Work Days	Forecast Start	Forecast Finish	BL FINISH	Total Float	% Comp	FY13												FY14												FY15																											
								S				O				N				D				J				F				M				A				M				J				J				A				S			
8200-C260	TF LOWER Align and match drill new Ring Splice	1	19JUL13	19JUL13	11OCT13	110	0																																																				
8200-C270	TF LOWER Install and torque all bolts	1	22JUL13	22JUL13	14OCT13	110	0																																																				
8200-C290	Fiber & electrical Reinstallation	20	23JUL13	19AUG13	11NOV13	110	0																																																				
DOC																																																											
Installation																																																											
8200-0020	PREPARE WORK PLANNING FORM	1	24OCT11A	28OCT11A	01NOV11		100																																																				
8200-0028F	Fiducial Photogrammetry	10	17FEB12A	22FEB12A	26MAR12		100																																																				
8200-0021	Fab/AssyInstallation Procedure	126*	06JUL12A	11JAN13	30NOV11	279	90	Fab/AssyInstallation Procedure																																																			
Alignment Verification Coil & VV																																																											
Installation																																																											
8200-0105	Map internal targets to external	10	12SEP13*	25SEP13	04MAR14	155	0	Map internal targets to external																																																			
8200-0106	Verify Vessel Alignemnt targets	10	26SEP13	09OCT13	18MAR14	155	0	Verify Vessel Alignemnt targets																																																			
8200-0107	Verify Coil Alignment Targets	10	10OCT13	23OCT13	01APR14	155	0	Verify Coil Alignment Targets																																																			
8200-0110	Adjust PF Coils	6	24OCT13	31OCT13	09APR14	155	0	Adjust PF Coils																																																			
Reinstall Equipment																																																											
Installation																																																											
8200-0125	Install New Electrical Tray	163	09MAY13	10JAN14	23MAY14	114	0	Install New Electrical Tray																																																			
8200-0124	Re-install RF pipes	20	04OCT13	31OCT13	28MAR14	155	0	Re-install RF pipes																																																			
Bay by Bay Diagnostic																																																											
Installation																																																											
8200-0130	Perform bay by bay review Elect	2	20AUG13	21AUG13	13NOV13	240	0	Perform bay by bay review Elect																																																			
8200-0131	Perform bay by bay review Mech	2	21AUG13	22AUG13	13NOV13	109	0	Perform bay by bay review Mech																																																			
8200-0132	Revise reinstallation procedures	10	23AUG13	06SEP13	20NOV13	109	0	Revise reinstallation procedures																																																			
8200-0133	Reinstall Equipment	80	12SEP13	15JAN14	11JUN14	106	0	Reinstall Equipment																																																			
8200-0135	Reinstall Elect	80	07NOV13	12MAR14	07AUG14	106	0	Reinstall Elect																																																			
8200-0136A	Install Required Blank Covers	10	16JAN14	29JAN14	25JUN14	153	0	Install Required Blank Covers																																																			
8200-0115	Replace Lower Hoses	3	30JAN14	03FEB14		153	0	Replace Lower Hoses																																																			
8200-0136	Testing	20	13MAR14	09APR14	05SEP14	106	0	Testing																																																			
LOE																																																											
Final Design																																																											
FY108200A	FY10 Actual Cost	110	03MAY10A	30SEP10A	30SEP10A		100																																																				
Installation																																																											
8200-0012	Assembly oversight prior to outage (fy10 & fy11)	377*	03MAY10A	30SEP11A	31OCT11		100																																																				
8200-0017	Misc M&S (\$500.00 per Day)	605*	17OCT11A	27MAR14	22SEP14	379	43	Misc M&S (\$500.00 per Day)																																																			
8200-0017A	Two Welding Machine for the NTC	646	12DEC11A	18JAN12A	15SEP14		100																																																				
Project Management																																																											
FY108200	FY10 Actual Cost	123	02NOV09A	30APR10A	30APR10A		100																																																				
Prerequisites																																																											
Installation																																																											
8200-0028A	RF Line develop as-built assy drawing	99	14FEB11A	31MAY11A	28OCT11		100																																																				

Activity ID	Activity Description	Work Days	Forecast Start	Forecast Finish	BL FINISH	Total Float	% Comp	FY13												FY14												FY15											
								S O N D J F M A M J J A S												S O N D J F M A M J J A S												S O N D J F M A M J J A S											
8200-0028E	RF Line develop as-built assy drawing	10	01NOV11A	16NOV11A	14OCT10		100																																				
Fabrication / Assembly																																											
1301-0300	Fab Drill Jig for add'l holes in all OTF Flags	138*	23MAR12A	31AUG12A	07OCT13		100	Fab Drill Jig for add'l holes in all OTF Flags																																			
1301-0310	Drill (24) Add'l holes in all OTF Flags	232*	25JUN12A	30MAY13	18DEC13	220	95	Drill (24) Add'l holes in all OTF Flags																																			
Job: 8210 - Field Supervision & Oversight-PERRY																																											
LOE																																											
Installation																																											
8200-0005A	Work Planning	97	17OCT11A	23MAR12A	06JAN12		100																																				
8200-00121	Removal oversight	70*	17OCT11A	31JAN12A	01MAY12		100																																				
8200-0013B	Installation Oversight - Electrical	478*	17OCT11A	17SEP13	01OCT13	506	55	Installation Oversight - Electrical																																			
8200-0015	Title 3 Support Mech Engineer	473*	17OCT11A	10SEP13	02OCT14	511	55	Title 3 Support Mech Engineer																																			
8200-0013	Installation Oversight - Mechanical	474*	18OCT11A	12SEP13	26SEP14	509	55	Installation Oversight - Mechanical																																			
8200-0012D	Re-installation Oversight	580*	01JUN12A	30SEP14	30SEP14	249	18	Re-installation Oversight																																			
8200-0010	Shop Rework - Oversight	433	31OCT12	01AUG14	02OCT14	287	0	Shop Rework - Oversight																																			
8200-0011	Shop Rework - Support	436	31OCT12	06AUG14	02OCT14	287	0	Shop Rework - Support																																			
8200-0015A	Title 3 Support Drafting	343*	31OCT12	26MAR14	26MAR14	380	0	Title 3 Support Drafting																																			
Prerequisites																																											
Installation																																											
8200-0002	Designs complete	0	14JAN13			279	0	Designs complete																																			
8200-0003	Assembly Sequence complete	0	11FEB13			617	0	Assembly Sequence complete																																			
8200-0005	Installation procedure Complete	0	08MAR13*			279	0	Installation procedure Complete																																			
8200-0004	Parts Ready for Installation	0	10APR13*			617	0	Parts Ready for Installation																																			
8200-0006	Mobilize crews	0	10APR13*			617	0	Mobilize crews																																			
8200-0007	CENTER STACK READY FOR INSTALLATION	0	26FEB14			40	0	CENTER STACK READY FOR INSTALLATION																																			
Job: 8250 - Remove/Install Centerstack-PERRY																																											
Remove Old Centerstack																																											
Installation																																											
8250-101	N/A Disconnect Hoses (X-90)	1	03OCT11A	03OCT11A	30NOV11A		100																																				
8250-105	N/A Remove umbrella lid (top and bottom) (X-90)	1	03OCT11A	03OCT11A	30NOV11A		100																																				
8250-109	N/A Remove flex bus (top and bottom) (X-90)	6	04OCT11A	11OCT11A	30NOV11A		100																																				
8250-113	Support lower support structure	4	01DEC11A	06DEC11A	24JAN12		100																																				
8250-117	lift old centerstack	1	02DEC11A	02DEC11A	26JAN12		100																																				
8250-121	Remove old centerstack pedestal	1	23JAN12A	23JAN12A	02FEB12		100																																				
8250-PP01A	CS Analysis Update Analysis	64*	01APR13*	28JUN13	09OCT12	560	0	CS Analysis Update Analysis																																			
Install New Centerstack																																											
Installation																																											
8250-123	Dsgn Lift Fixture for new centerstack pedestal	43	31OCT12	10JAN13	28MAR13	241	0	Dsgn Lift Fixture for new centerstack pedestal																																			
8250-124	Fab Lift Fixture for new centerstack pedestal	58	11JAN13	02APR13	20JAN14	241	0	Fab Lift Fixture for new centerstack pedestal																																			
8250-125	Install new centerstack pedestal	20	23AUG13	20SEP13	03FEB14	142	0	Install new centerstack pedestal																																			

